



# Certificate of Analysis

Compliance Test

**AVF CBD, LLC**  
756 HICKORY INDUSTRIAL DR.  
OLD HICKORY, TN 37138

Batch # E100-7125011421-6/9  
Batch Date: 2021-01-14  
Extracted From: Hemp

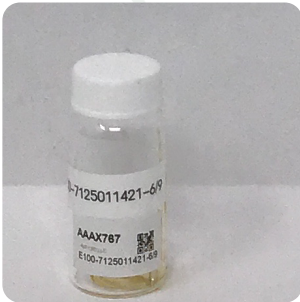
Test Reg State: Florida

Production Facility: Entoura  
Production Date: 2021-01-14

Order # AVF210121-020018  
Order Date: 2021-01-21  
Sample # AAAX767

Sampling Date: 2021-01-22  
Lab Batch Date: 2021-01-22  
Completion Date: 2021-01-26

Initial Gross Weight: 15.778 g



Product Image

Potency  
Tested

**Delta 8 Potency 11**

Specimen Weight: 47.750 mg

Analyte	LOD (%)	LOQ (%)	Result (mg/g)	(%)
Delta-8 THC	0.000026	0.001	767.900	76.790
CBN	0.000014	0.001	0.670	0.067
CBD	0.000054	0.001	0.634	0.063
CBC	0.000018	0.001	<LOQ	<LOQ
THCV	0.000007	0.001	<LOQ	<LOQ
Delta-9 THC	0.000013	0.001	<LOQ	<LOQ
CBGA	0.00008	0.001	<LOQ	<LOQ
CBG	0.000248	0.001	<LOQ	<LOQ
CBDV	0.000065	0.001	<LOQ	<LOQ
CBDA	0.00001	0.001	<LOQ	<LOQ
THCA-A	0.000032	0.001	<LOQ	<LOQ

**Tested**  
(LCUV)

**Potency Summary**

<b>Total CBD</b> 0.063%	<b>Total THC</b> None Detected
<b>Total CBG</b> None Detected	<b>Total CBN</b> 0.067%
<b>Other Cannabinoids</b> 76.790%	<b>Total Cannabinoids</b> 76.920%

*Xueli Gao*  
Xueli Gao  
Lab Toxicologist  
Ph.D., DABT

*Aixia Sun*  
Aixia Sun  
Lab Director/Principal Scientist  
D.H.Sc., M.Sc., B.Sc., MT (AAB)



Definitions and Abbreviations used in this report: \*Total CBD = CBD + (CBD-A \* 0.877), \*Total THC = THCA-A \* 0.877 + Delta 9 THC, \*CBG Total = (CBGA \* 0.877) + CBG, \*CBN Total = (CBNA \* 0.877) + CBN, \*Other Cannabinoids Total = CBC + CBDV + THCV + THCV-A, \*Total Detected Cannabinoids = CBD Total + CBG Total + CBN Total + THC Total + CBC + CBDV + THCV + THCV-A, \*Analyte Details above show the Dry Weight Concentrations unless specified as 12% moisture concentration. (mg/ml) = Milligrams per Milliliter, LOQ = Limit of Quantitation, LOD = Limit of Detection, Dilution = Dilution Factor (ppb) = Parts per Billion, (%) = Percent, (cfu/g) = Colony Forming Unit per Gram (cfu/g) = Colony Forming Unit per Gram, , LOD = Limit of Detection, (µg/g) = Microgram per Gram (ppm) = Parts per Million, (ppm) = (µg/g), (aw) = aw (area ratio) = Area Ratio, (mg/Kg) = Milligram per Kilogram, \*Measurement of Uncertainty = +/- 5%

This report shall not be reproduced, without written approval, from ACS Laboratory. The results of this report relate only to the material or product analyzed. Test results are confidential unless explicitly waived otherwise. Accredited by a third-party accrediting body as a competent testing laboratory pursuant to ISO/IEC 17025 of the International Organization for Standardization.

