

Fat Dog Terpenes

Lab ID: 1910124-01

Fat Dog Trading LLC

METRC Batch ID:

Date Sampled: 10/15/19

Date Printed: 10/23/19

Report cannot be used for OLCC/OHA compliance.

Potency Analysis

Analytical Method: De Backer, Journal of Chromatography b.2009. 11.004 - SOP 102

Cannabinoids (% weight)		LOQ
THCA	< LOQ	0.129
delta 9-THC	< LOQ	0.129
delta 8-THC	< LOQ	0.129
CBGA	< LOQ	0.129
CBDA	< LOQ	0.129
CBD	< LOQ	0.129
CBN	< LOQ	0.129
CBG	0.732	0.129
CBC	< LOQ	0.129

Total THC
< LOQ %

Total CBD
< LOQ %

<LOQ - Results below the Limit of Quantitation

Acid form of THC/CBD are decarboxylated by heat, lose 12% of original mass as CO2. Result = *bioactive*

"Total" Cannabinoid accounts for decarboxylation and moisture content. Total THC = $[(THCA \times 0.877) + \Delta 9THC] / (100\% - MC)$



Erik Werstler
Lab Director

Fat Dog Terpenes

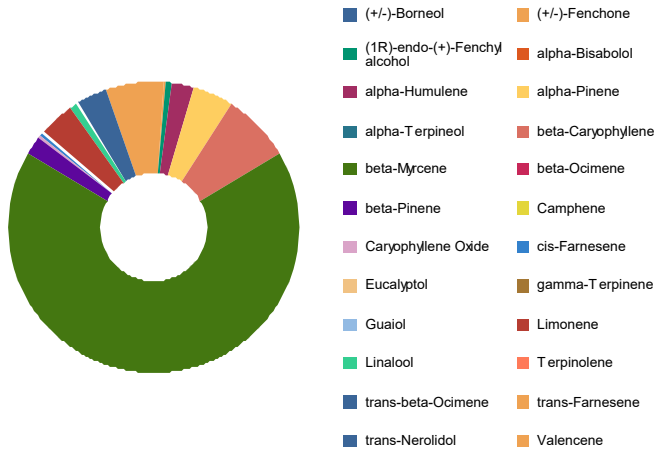
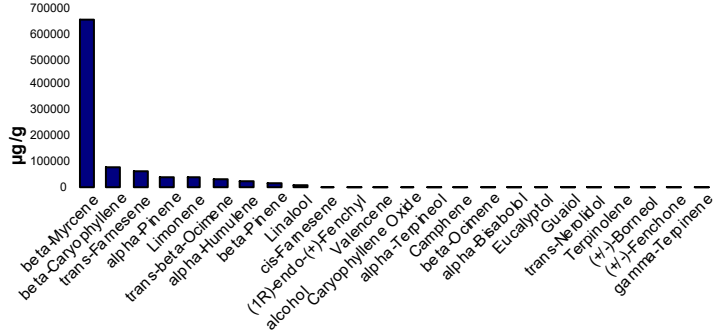
Fat Dog Trading LLC

Laboratory ID: 1910124-01

Terpene Test Report

Analysis Method/SOP: Terp

Analyte	Result µg/g	Result %
alpha-Bisabolol	1122	0.1122
Camphene	1426	0.1426
Camphor	< LOQ	< LOQ
delta-3-Carene	< LOQ	< LOQ
beta-Caryophyllene	77310	7.731
Caryophyllene Oxide	1815	0.1815
alpha-Cedrene	< LOQ	< LOQ
Cedrol	< LOQ	< LOQ
(1R)-endo-(+)-Fenchyl alcohol	3176	0.3176
Eucalyptol	1027	0.1027
Geraniol	< LOQ	< LOQ
Geranyl acetate	< LOQ	< LOQ
Guaiol	1016	0.1016
alpha-Humulene	24130	2.413
Isoborneol	< LOQ	< LOQ
Isopulegol	< LOQ	< LOQ
Limonene	37370	3.737
Linalool	9679	0.9679
beta-Myrcene	656500	65.65
trans-Nerolidol	710.5	0.07105
alpha-Pinene	43330	4.333
beta-Pinene	20120	2.012
Pulegone	< LOQ	< LOQ
Sabinene	< LOQ	< LOQ
Sabinene hydrate	< LOQ	< LOQ
gamma-Terpinene	328.8	0.03288
alpha-Terpinene	< LOQ	< LOQ
Terpinolene	611.9	0.06119
Valencene	2383	0.2383
Nerol	< LOQ	< LOQ
cis-Nerolidol	< LOQ	< LOQ
(+/-)-Borneol	552.9	0.05529
(+/-)-Fenchone	495.7	0.04957




Erik Werstler
Lab Director

Fat Dog Terpenes

Fat Dog Trading LLC

Laboratory ID: 1910124-01

Analysis Method/SOP: Terp

Analyte	Result µg/g	Result %
alpha-Phellandrene	< LOQ	< LOQ
beta-Ocimene	1416	0.1416
cis-Farnesene	4189	0.4189
Menthol	< LOQ	< LOQ
trans-beta-Ocimene	35450	3.545
trans-Farnesene	61540	6.154
alpha-Terpineol	1429	0.1429
gamma-Terpineol	< LOQ	< LOQ
Total Terpenes	987400	98.74



Erik Werstler
Lab Director

Fat Dog Terpenes

Fat Dog Trading LLC

Laboratory ID: 1910124-01

Fat Dog Terpenes

Fat Dog Trading LLC

Date Sampled: 10/15/19 00:00

Date Accepted: 10/15/19

Results Valid Until: 10/14/20

Sample ID: 1910124-01

Matrix: Extracts and Concentrates

M #:

Pesticide Analysis in PPM

Date/Time Extracted: 10/16/19 18:24

Date/Time Analyzed: 10/17/19 04:37

Analysis Method/SOP: SOP 33

Instrument: Selene

Batch Identification: B19J093

Analyte	Result	Action Level	LOQ	Type
Abamectin	< LOQ	0.5	0.2425	Avermectin insecticide
Acephate	< LOQ	0.4	0.1940	Organophosphate Insecticide
Acequinocyl	< LOQ	2	0.9699	Quinoline insecticide
Acetamiprid	< LOQ	0.2	0.09699	Neonicotinoid insecticide
Aldicarb	< LOQ	0.4	0.1940	Carbamate insecticide
Azoxystrobin	< LOQ	0.2	0.09699	Strobin fungicide
Bifenazate	< LOQ	0.2	0.09699	Carbazate miticide
Bifenthrin	< LOQ	0.2	0.09699	Pyrethroid insecticide
Boscalid	< LOQ	0.4	0.1940	Carboxamide fungicide
Carbaryl	< LOQ	0.2	0.09699	Carbamate insecticide
Carbofuran	< LOQ	0.2	0.09699	Carbamate insecticide
Chlorantraniliprole	< LOQ	0.2	0.09699	Anthranilic diamide insecticide
Chlorfenapyr	< LOQ	1	0.4850	Pyrrole insecticide
Chlorpyrifos	< LOQ	0.2	0.09699	Organophosphate Insecticide
Clofentezine	< LOQ	0.2	0.09699	Tetrazine miticide
Cyfluthrin	< LOQ	1	0.4850	Pyrethroid insecticide
Cypermethrin	< LOQ	1	0.4850	Pyrethroid insecticide
Daminozide	< LOQ	1	0.4850	Plant growth regulator
DDVP (Dichlorvos)	< LOQ	1	0.4850	Organophosphate insecticide
Diazinon	< LOQ	0.2	0.09699	Organophosphate Insecticide
Dimethoate	< LOQ	0.2	0.09699	Organophosphate insecticide
Ethoprophos	< LOQ	0.2	0.09699	Organophosphate insecticide
Etofenprox	< LOQ	0.4	0.1940	Pyrethroid insecticide
Etoxazole	< LOQ	0.2	0.09699	Oxazoline insecticide
Fenoxycarb	< LOQ	0.2	0.09699	Carbamate insecticide
Fenpyroximate	< LOQ	0.4	0.1940	Pyrazolium miticide
Fipronil	< LOQ	0.4	0.1940	Pyrazole insecticide
Fonicamid	< LOQ	1	0.4850	Pyridinecarboxamide insecticide



Erik Werstler

Lab Director

Fat Dog Terpenes

Fat Dog Trading LLC

Laboratory ID: 1910124-01

Fat Dog Terpenes

Fat Dog Trading LLC

Date Sampled: 10/15/19 00:00

Date Accepted: 10/15/19

Results Valid Until: 10/14/20

Sample ID: 1910124-01

Matrix: Extracts and Concentrates

M #:

Pesticide Analysis in PPM

Date/Time Extracted: 10/16/19 18:24

Date/Time Analyzed: 10/17/19 04:37

Analysis Method/SOP: SOP 33

Instrument: Selene

Batch Identification: B19J093

Analyte	Result	Action Level	LOQ	Type
Fludioxonil	< LOQ	0.4	0.1940	Benzodioxole fungicide
Hexythiazox	< LOQ	1	0.4850	Heterocyclic miticide
Imazalil	< LOQ	0.2	0.09699	Imidazole fungicide
Imidacloprid	< LOQ	0.4	0.1940	Neonicotinoid insectide
Kresoxim-methyl	< LOQ	0.4	0.1940	Strobilurin fungicide
Malathion	< LOQ	0.2	0.09699	Organophosphate insecticide
Metalaxyl	< LOQ	0.2	0.09699	Benzenoid fungicide
Methiocarb	< LOQ	0.2	0.09699	Carbamate insecticide
Methomyl	< LOQ	0.4	0.1940	Carbamate insecticide
Methyl parathion	< LOQ	0.2	0.09699	Organophosphate insecticide
MGK-264	< LOQ	0.2	0.09699	Pesticide synergist
Myclobutanil	< LOQ	0.2	0.09699	Triazole fungicide
Naled	< LOQ	0.5	0.2425	Organophosphate insecticide
Oxamyl	< LOQ	1	0.4850	Carbamate insecticide
Paclobutrazol	< LOQ	0.4	0.1940	Triazole fungicide
Permethrins	< LOQ	0.2	0.09699	Pyrethroid insecticide
Phosmet	< LOQ	0.2	0.09699	Organophosphate insecticide
Piperonyl butoxide	< LOQ	2	0.9699	Pesticide synergist
Prallethrin	< LOQ	0.2	0.09699	Pyrethroid insecticide
Propiconazole	< LOQ	0.4	0.1940	Triazole fungicide
Propoxur	< LOQ	0.2	0.09699	Carbamate insecticide
Pyrethrins	< LOQ	1	0.4850	Pyrethroid insecticide
Pyridaben	< LOQ	0.2	0.09699	Pyridazinone insecticide
Spinosad	< LOQ	0.2	0.09699	Spinosyn insecticide
Spiromesifen	< LOQ	0.2	0.09699	Keto-enol insecticide
Spirotetramat	< LOQ	0.2	0.09699	Keto-enol insecticide
Spiroxamine	< LOQ	0.4	0.1940	Spiroketalamine fungicide
Tebuconazole	< LOQ	0.4	0.1940	Triazole fungicide



Erik Werstler
Lab Director

Fat Dog Terpenes

Fat Dog Trading LLC

Laboratory ID: 1910124-01

Fat Dog Terpenes

Fat Dog Trading LLC

Date Sampled: 10/15/19 00:00

Date Accepted: 10/15/19

Results Valid Until: 10/14/20

Sample ID: 1910124-01

Matrix: Extracts and Concentrates

M #:

Pesticide Analysis in PPM

Date/Time Extracted: 10/16/19 18:24

Date/Time Analyzed: 10/17/19 04:37

Analysis Method/SOP: SOP 33

Instrument: Selene

Batch Identification: B19J093

Analyte	Result	Action Level	LOQ	Type
Thiacloprid	< LOQ	0.2	0.09699	Neonicotinoid insecticide
Thiamethoxam	< LOQ	0.2	0.09699	Neonicotinoid insecticide
Trifloxystrobin	< LOQ	0.2	0.09699	Strobin fungicide

<LOQ - Results below the Limit of Quantitation - Compound not detected

Results above the Action Level fail state testing requirements and will be highlighted **Red**.



Erik Werstler

Lab Director

Fat Dog Terpenes

Fat Dog Trading LLC

Laboratory ID: 1910124-01

Quality Control Potency

Batch: B19J085 - Potency

Blank(B19J085-BLK1)

Analyte	Result	LOQ	Units	%Recovery Limits	Extracted	Analyzed	Notes
THCA	< LOQ	0.183	%		10/15/19 18:02	10/15/19 21:18	
delta 9-THC	< LOQ	0.183	%		10/15/19 18:02	10/15/19 21:18	
CBGA	< LOQ	0.183	%		10/15/19 18:02	10/15/19 21:18	
CBDA	< LOQ	0.183	%		10/15/19 18:02	10/15/19 21:18	
CBD	< LOQ	0.183	%		10/15/19 18:02	10/15/19 21:18	
CBN	< LOQ	0.183	%		10/15/19 18:02	10/15/19 21:18	
CBG	< LOQ	0.183	%		10/15/19 18:02	10/15/19 21:18	
delta 8-THC	< LOQ	0.183	%		10/15/19 18:02	10/15/19 21:18	
CBC	< LOQ	0.183	%		10/15/19 18:02	10/15/19 21:18	

LCS(B19J085-BS1)

Analyte	% Recovery	LOQ	Units	%Recovery Limits	Extracted	Analyzed	Notes
THCA	89.9	0.196	%	85-115	10/15/19 18:02	10/15/19 21:31	
delta 9-THC	98.5	0.196	%	85-115	10/15/19 18:02	10/15/19 21:31	
CBDA	92.4	0.196	%	85-115	10/15/19 18:02	10/15/19 21:31	
CBD	101	0.196	%	85-115	10/15/19 18:02	10/15/19 21:31	



Erik Werstler
Lab Director

Fat Dog Terpenes

Fat Dog Trading LLC

Laboratory ID: 1910124-01

Quality Control Pesticide Analysis

Batch: B19J093 - Pest

Blank(B19J093-BLK1)

Analyte	Result	LOQ	Units	%Recovery Limits	Extracted	Analyzed	Notes
Abamectin	< LOQ	0.2500	ppm		10/16/19 18:24	10/17/19 01:21	
Acephate	< LOQ	0.2000	ppm		10/16/19 18:24	10/17/19 01:21	
Acequinocyl	< LOQ	1.000	ppm		10/16/19 18:24	10/17/19 01:21	
Acetamiprid	< LOQ	0.1000	ppm		10/16/19 18:24	10/17/19 01:21	
Aldicarb	< LOQ	0.2000	ppm		10/16/19 18:24	10/17/19 01:21	
Azoxystrobin	< LOQ	0.1000	ppm		10/16/19 18:24	10/17/19 01:21	
Bifenazate	< LOQ	0.1000	ppm		10/16/19 18:24	10/17/19 01:21	
Bifenthrin	< LOQ	0.1000	ppm		10/16/19 18:24	10/17/19 01:21	
Boscalid	< LOQ	0.2000	ppm		10/16/19 18:24	10/17/19 01:21	
Carbaryl	< LOQ	0.1000	ppm		10/16/19 18:24	10/17/19 01:21	
Carbofuran	< LOQ	0.1000	ppm		10/16/19 18:24	10/17/19 01:21	
Chlorantraniliprole	< LOQ	0.1000	ppm		10/16/19 18:24	10/17/19 01:21	
Chlorfenapyr	< LOQ	0.5000	ppm		10/16/19 18:24	10/17/19 01:21	
Chlorpyrifos	< LOQ	0.1000	ppm		10/16/19 18:24	10/17/19 01:21	
Clofentezine	< LOQ	0.1000	ppm		10/16/19 18:24	10/17/19 01:21	
Cyfluthrin	< LOQ	0.5000	ppm		10/16/19 18:24	10/17/19 01:21	
Cypermethrin	< LOQ	0.5000	ppm		10/16/19 18:24	10/17/19 01:21	
Daminozide	< LOQ	0.5000	ppm		10/16/19 18:24	10/17/19 01:21	
DDVP (Dichlorvos)	< LOQ	0.5000	ppm		10/16/19 18:24	10/17/19 01:21	
Diazinon	< LOQ	0.1000	ppm		10/16/19 18:24	10/17/19 01:21	
Dimethoate	< LOQ	0.1000	ppm		10/16/19 18:24	10/17/19 01:21	
Ethoprophos	< LOQ	0.1000	ppm		10/16/19 18:24	10/17/19 01:21	
Etofenprox	< LOQ	0.2000	ppm		10/16/19 18:24	10/17/19 01:21	
Etoxazole	< LOQ	0.1000	ppm		10/16/19 18:24	10/17/19 01:21	
Fenoxycarb	< LOQ	0.1000	ppm		10/16/19 18:24	10/17/19 01:21	
Fenpyroximate	< LOQ	0.2000	ppm		10/16/19 18:24	10/17/19 01:21	
Fipronil	< LOQ	0.2000	ppm		10/16/19 18:24	10/17/19 01:21	
Flonicamid	< LOQ	0.5000	ppm		10/16/19 18:24	10/17/19 01:21	
Fludioxonil	< LOQ	0.2000	ppm		10/16/19 18:24	10/17/19 01:21	
Hexythiazox	< LOQ	0.5000	ppm		10/16/19 18:24	10/17/19 01:21	
Imazalil	< LOQ	0.1000	ppm		10/16/19 18:24	10/17/19 01:21	
Imidacloprid	< LOQ	0.2000	ppm		10/16/19 18:24	10/17/19 01:21	
Kresoxim-methyl	< LOQ	0.2000	ppm		10/16/19 18:24	10/17/19 01:21	
Malathion	< LOQ	0.1000	ppm		10/16/19 18:24	10/17/19 01:21	



Erik Werstler
Lab Director

Fat Dog Terpenes

Fat Dog Trading LLC

Laboratory ID: 1910124-01

Quality Control Pesticide Analysis (Continued)

Batch: B19J093 - Pest (Continued)

Blank(B19J093-BLK1)

Analyte	Result	LOQ	Units	%Recovery Limits	Extracted	Analyzed	Notes
Metalaxyl	< LOQ	0.1000	ppm		10/16/19 18:24	10/17/19 01:21	
Methiocarb	< LOQ	0.1000	ppm		10/16/19 18:24	10/17/19 01:21	
Methomyl	< LOQ	0.2000	ppm		10/16/19 18:24	10/17/19 01:21	
Methyl parathion	< LOQ	0.1000	ppm		10/16/19 18:24	10/17/19 01:21	
MGK-264	< LOQ	0.1000	ppm		10/16/19 18:24	10/17/19 01:21	
Myclobutanil	< LOQ	0.1000	ppm		10/16/19 18:24	10/17/19 01:21	
Naled	< LOQ	0.2500	ppm		10/16/19 18:24	10/17/19 01:21	
Oxamyl	< LOQ	0.5000	ppm		10/16/19 18:24	10/17/19 01:21	
Paclobutrazol	< LOQ	0.2000	ppm		10/16/19 18:24	10/17/19 01:21	
Permethrins	< LOQ	0.1000	ppm		10/16/19 18:24	10/17/19 01:21	
Phosmet	< LOQ	0.1000	ppm		10/16/19 18:24	10/17/19 01:21	
Piperonyl butoxide	< LOQ	1.000	ppm		10/16/19 18:24	10/17/19 01:21	
Prallethrin	< LOQ	0.1000	ppm		10/16/19 18:24	10/17/19 01:21	
Propiconazole	< LOQ	0.2000	ppm		10/16/19 18:24	10/17/19 01:21	
Propoxur	< LOQ	0.1000	ppm		10/16/19 18:24	10/17/19 01:21	
Pyrethrins	< LOQ	0.5000	ppm		10/16/19 18:24	10/17/19 01:21	
Pyridaben	< LOQ	0.1000	ppm		10/16/19 18:24	10/17/19 01:21	
Spinosad	< LOQ	0.1000	ppm		10/16/19 18:24	10/17/19 01:21	
Spiromesifen	< LOQ	0.1000	ppm		10/16/19 18:24	10/17/19 01:21	
Spirotetramat	< LOQ	0.1000	ppm		10/16/19 18:24	10/17/19 01:21	
Spiroxamine	< LOQ	0.2000	ppm		10/16/19 18:24	10/17/19 01:21	
Tebuconazole	< LOQ	0.2000	ppm		10/16/19 18:24	10/17/19 01:21	
Thiacloprid	< LOQ	0.1000	ppm		10/16/19 18:24	10/17/19 01:21	
Thiamethoxam	< LOQ	0.1000	ppm		10/16/19 18:24	10/17/19 01:21	
Trifloxystrobin	< LOQ	0.1000	ppm		10/16/19 18:24	10/17/19 01:21	

LCS(B19J093-BS1)

Analyte	% Recovery	LOQ	Units	%Recovery Limits	Extracted	Analyzed	Notes
Abamectin	75.5	0.2500	ppm	50-150	10/16/19 18:24	10/17/19 00:59	
Acephate	98.3	0.2000	ppm	50-150	10/16/19 18:24	10/17/19 00:59	
Acequinocyl	82.0	1.000	ppm	50-150	10/16/19 18:24	10/17/19 00:59	
Acetamiprid	90.1	0.1000	ppm	50-150	10/16/19 18:24	10/17/19 00:59	
Aldicarb	92.2	0.2000	ppm	50-150	10/16/19 18:24	10/17/19 00:59	
Azoxystrobin	89.1	0.1000	ppm	50-150	10/16/19 18:24	10/17/19 00:59	
Bifenazate	113	0.1000	ppm	50-150	10/16/19 18:24	10/17/19 00:59	



Erik Werstler
Lab Director

Fat Dog Terpenes

Fat Dog Trading LLC

Laboratory ID: 1910124-01

Quality Control Pesticide Analysis (Continued)

Batch: B19J093 - Pest (Continued)

LCS(B19J093-BS1)							
Analyte	% Recovery	LOQ	Units	%Recovery Limits	Extracted	Analyzed	Notes
Bifenthrin	82.2	0.1000	ppm	50-150	10/16/19 18:24	10/17/19 00:59	
Boscalid	87.6	0.2000	ppm	50-150	10/16/19 18:24	10/17/19 00:59	
Carbaryl	86.8	0.1000	ppm	50-150	10/16/19 18:24	10/17/19 00:59	
Carbofuran	82.8	0.1000	ppm	50-150	10/16/19 18:24	10/17/19 00:59	
Chlorantraniliprole	94.3	0.1000	ppm	50-150	10/16/19 18:24	10/17/19 00:59	
Chlorfenapyr	98.8	0.5000	ppm	50-150	10/16/19 18:24	10/17/19 00:59	
Chlorpyrifos	90.1	0.1000	ppm	50-150	10/16/19 18:24	10/17/19 00:59	
Clofentezine	88.2	0.1000	ppm	50-150	10/16/19 18:24	10/17/19 00:59	
Cyfluthrin	106	0.5000	ppm	50-150	10/16/19 18:24	10/17/19 00:59	
Cypermethrin	98.7	0.5000	ppm	50-150	10/16/19 18:24	10/17/19 00:59	
Daminozide	120	0.5000	ppm	50-150	10/16/19 18:24	10/17/19 00:59	
DDVP (Dichlorvos)	86.9	0.5000	ppm	50-150	10/16/19 18:24	10/17/19 00:59	
Diazinon	88.3	0.1000	ppm	50-150	10/16/19 18:24	10/17/19 00:59	
Dimethoate	89.4	0.1000	ppm	50-150	10/16/19 18:24	10/17/19 00:59	
Ethoprophos	86.0	0.1000	ppm	50-150	10/16/19 18:24	10/17/19 00:59	
Etofenprox	78.0	0.2000	ppm	50-150	10/16/19 18:24	10/17/19 00:59	
Etoxazole	99.9	0.1000	ppm	50-150	10/16/19 18:24	10/17/19 00:59	
Fenoxycarb	87.3	0.1000	ppm	50-150	10/16/19 18:24	10/17/19 00:59	
Fenpyroximate	83.2	0.2000	ppm	50-150	10/16/19 18:24	10/17/19 00:59	
Fipronil	89.2	0.2000	ppm	50-150	10/16/19 18:24	10/17/19 00:59	
Flonicamid	98.0	0.5000	ppm	50-150	10/16/19 18:24	10/17/19 00:59	
Fludioxonil	87.8	0.2000	ppm	50-150	10/16/19 18:24	10/17/19 00:59	
Hexythiazox	87.7	0.5000	ppm	50-150	10/16/19 18:24	10/17/19 00:59	
Imazalil	88.2	0.1000	ppm	50-150	10/16/19 18:24	10/17/19 00:59	
Imidacloprid	86.1	0.2000	ppm	50-150	10/16/19 18:24	10/17/19 00:59	
Kresoxim-methyl	86.3	0.2000	ppm	50-150	10/16/19 18:24	10/17/19 00:59	
Malathion	89.7	0.1000	ppm	50-150	10/16/19 18:24	10/17/19 00:59	
Metalaxyl	90.5	0.1000	ppm	50-150	10/16/19 18:24	10/17/19 00:59	
Methiocarb	89.0	0.1000	ppm	50-150	10/16/19 18:24	10/17/19 00:59	
Methomyl	86.4	0.2000	ppm	50-150	10/16/19 18:24	10/17/19 00:59	
Methyl parathion	98.4	0.1000	ppm	50-150	10/16/19 18:24	10/17/19 00:59	
MGK-264	95.7	0.1000	ppm	50-150	10/16/19 18:24	10/17/19 00:59	
Myclobutanil	95.5	0.1000	ppm	50-150	10/16/19 18:24	10/17/19 00:59	
Naled	88.5	0.2500	ppm	50-150	10/16/19 18:24	10/17/19 00:59	



Erik Werstler
Lab Director

Fat Dog Terpenes

Fat Dog Trading LLC

Laboratory ID: 1910124-01

Quality Control

Pesticide Analysis (Continued)

Batch: B19J093 - Pest (Continued)

LCS(B19J093-BS1)

Analyte	% Recovery	LOQ	Units	%Recovery Limits	Extracted	Analyzed	Notes
Oxamyl	98.9	0.5000	ppm	50-150	10/16/19 18:24	10/17/19 00:59	
Paclobutrazol	91.2	0.2000	ppm	50-150	10/16/19 18:24	10/17/19 00:59	
Permethrins	78.7	0.1000	ppm	50-150	10/16/19 18:24	10/17/19 00:59	
Phosmet	92.2	0.1000	ppm	50-150	10/16/19 18:24	10/17/19 00:59	
Piperonyl butoxide	89.7	1.000	ppm	50-150	10/16/19 18:24	10/17/19 00:59	
Prallethrin	92.9	0.1000	ppm	50-150	10/16/19 18:24	10/17/19 00:59	
Propiconazole	89.5	0.2000	ppm	50-150	10/16/19 18:24	10/17/19 00:59	
Propoxur	83.1	0.1000	ppm	50-150	10/16/19 18:24	10/17/19 00:59	
Pyrethrins	97.8	0.5000	ppm	50-150	10/16/19 18:24	10/17/19 00:59	
Pyridaben	81.7	0.1000	ppm	50-150	10/16/19 18:24	10/17/19 00:59	
Spinosad	94.2	0.1000	ppm	50-150	10/16/19 18:24	10/17/19 00:59	
Spiromesifen	90.4	0.1000	ppm	50-150	10/16/19 18:24	10/17/19 00:59	
Spirotetramat	88.3	0.1000	ppm	50-150	10/16/19 18:24	10/17/19 00:59	
Spiroxamine	89.9	0.2000	ppm	50-150	10/16/19 18:24	10/17/19 00:59	
Tebuconazole	92.2	0.2000	ppm	50-150	10/16/19 18:24	10/17/19 00:59	
Thiacloprid	99.3	0.1000	ppm	50-150	10/16/19 18:24	10/17/19 00:59	
Thiamethoxam	81.8	0.1000	ppm	50-150	10/16/19 18:24	10/17/19 00:59	
Trifloxystrobin	85.1	0.1000	ppm	50-150	10/16/19 18:24	10/17/19 00:59	



Erik Werstler
Lab Director

Fat Dog Terpenes

Fat Dog Trading LLC

Laboratory ID: 1910124-01

Quality Control Terpene Analysis

Batch: B19J087 - Terp

Blank(B19J087-BLK1)

Analyte	Result	LOQ	Units	%Recovery Limits	Extracted	Analyzed	Notes
alpha-Bisabolol	< LOQ	0.007500	%		10/15/19 22:42	10/17/19 01:53	
Camphene	< LOQ	0.007500	%		10/15/19 22:42	10/17/19 01:53	
Camphor	< LOQ	0.007500	%		10/15/19 22:42	10/17/19 01:53	
delta-3-Carene	< LOQ	0.007500	%		10/15/19 22:42	10/17/19 01:53	
beta-Caryophyllene	< LOQ	0.007500	%		10/15/19 22:42	10/17/19 01:53	
Caryophyllene Oxide	< LOQ	0.007500	%		10/15/19 22:42	10/17/19 01:53	
alpha-Cedrene	< LOQ	0.007500	%		10/15/19 22:42	10/17/19 01:53	
Cedrol	< LOQ	0.007500	%		10/15/19 22:42	10/17/19 01:53	
(1R)-endo-(+)-Fenchyl alcot	< LOQ	0.007500	%		10/15/19 22:42	10/17/19 01:53	
Eucalyptol	< LOQ	0.007500	%		10/15/19 22:42	10/17/19 01:53	
Geraniol	< LOQ	0.007500	%		10/15/19 22:42	10/17/19 01:53	
Geranyl acetate	< LOQ	0.007500	%		10/15/19 22:42	10/17/19 01:53	
Guaiol	< LOQ	0.007500	%		10/15/19 22:42	10/17/19 01:53	
alpha-Humulene	< LOQ	0.007500	%		10/15/19 22:42	10/17/19 01:53	
Isoborneol	< LOQ	0.007500	%		10/15/19 22:42	10/17/19 01:53	
Isopulegol	< LOQ	0.007500	%		10/15/19 22:42	10/17/19 01:53	
Limonene	< LOQ	0.007500	%		10/15/19 22:42	10/17/19 01:53	
Linalool	< LOQ	0.007500	%		10/15/19 22:42	10/17/19 01:53	
beta-Myrcene	< LOQ	0.007500	%		10/15/19 22:42	10/17/19 01:53	
trans-Nerolidol	< LOQ	0.007500	%		10/15/19 22:42	10/17/19 01:53	
alpha-Pinene	< LOQ	0.007500	%		10/15/19 22:42	10/17/19 01:53	
beta-Pinene	< LOQ	0.007500	%		10/15/19 22:42	10/17/19 01:53	
Pulegone	< LOQ	0.007500	%		10/15/19 22:42	10/17/19 01:53	
Sabinene	< LOQ	0.007500	%		10/15/19 22:42	10/17/19 01:53	
Sabinene hydrate	< LOQ	0.007500	%		10/15/19 22:42	10/17/19 01:53	
gamma-Terpinene	< LOQ	0.007500	%		10/15/19 22:42	10/17/19 01:53	
alpha-Terpinene	< LOQ	0.007500	%		10/15/19 22:42	10/17/19 01:53	
Terpinolene	< LOQ	0.007500	%		10/15/19 22:42	10/17/19 01:53	
Valencene	< LOQ	0.007500	%		10/15/19 22:42	10/17/19 01:53	
Nerol	< LOQ	0.007500	%		10/15/19 22:42	10/17/19 01:53	
cis-Nerolidol	< LOQ	0.007500	%		10/15/19 22:42	10/17/19 01:53	
(+/-)-Borneol	< LOQ	0.007500	%		10/15/19 22:42	10/17/19 01:53	
(+/-)-Fenchone	< LOQ	0.007500	%		10/15/19 22:42	10/17/19 01:53	
alpha-Phellandrene	< LOQ	0.007500	%		10/15/19 22:42	10/17/19 01:53	



Erik Werstler
Lab Director

Fat Dog Terpenes

Fat Dog Trading LLC

Laboratory ID: 1910124-01

Quality Control

Terpene Analysis (Continued)

Batch: B19J087 - Terp (Continued)

Blank(B19J087-BLK1)							
Analyte	Result	LOQ	Units	%Recovery Limits	Extracted	Analyzed	Notes
beta-Ocimene	< LOQ	0.007500	%		10/15/19 22:42	10/17/19 01:53	
cis-Farnesene	< LOQ	0.007500	%		10/15/19 22:42	10/17/19 01:53	
Menthol	< LOQ	0.007500	%		10/15/19 22:42	10/17/19 01:53	
trans-beta-Ocimene	< LOQ	0.007500	%		10/15/19 22:42	10/17/19 01:53	
trans-Farnesene	< LOQ	0.007500	%		10/15/19 22:42	10/17/19 01:53	
alpha-Terpineol	< LOQ	0.007500	%		10/15/19 22:42	10/17/19 01:53	
gamma-Terpineol	< LOQ	0.007500	%		10/15/19 22:42	10/17/19 01:53	

Notes and Definitions

- B Analyte detected in method blank, but not associated samples.
 - B2 Analyte detected in sample and associate method blank.
 - C Interference due to co-elution.
 - D Initial result exceeded calibration range, reported data are based on analysis of a dilution.
 - H Non-homogenous sample matrix affecting RPD and/or QC.
 - I Manual Integration was performed.
 - L Duplicate sample relative percent difference (RPD) exceeds QC limits.
 - M Anomalous results due to matrix interference
 - P Peaks manually split.
 - Q1 QC out of limits but still oK
 - Q2 Quality Control outside QC limits. Data considered estimate.
 - Q3 CCV was above the acceptance criteria. Non-detect samples are considered acceptable.
 - Q4 CCV was below the acceptance criteria, however the sample still exceeds the regulatory limit.
 - R Marginal Exceedence.
 - U Reported result is an estimate. The analyte was detected above the calibration range.
 - X Problems with initial analysis, reported data are from reinjection of prepared sample.
- <LOQ - Results below the Limit of Quantitation - Compound not detected



Erik Werstler
Lab Director