

SAN02DR01

Sample ID: 2011KCA0696.2133

Cultivar: N/A

Matrix: Concentrates & Extracts

Type: Distillate

Sample Size:

Received: 11/19/2020

Completed: 11/30/2020

Batch#: N/A



Summary

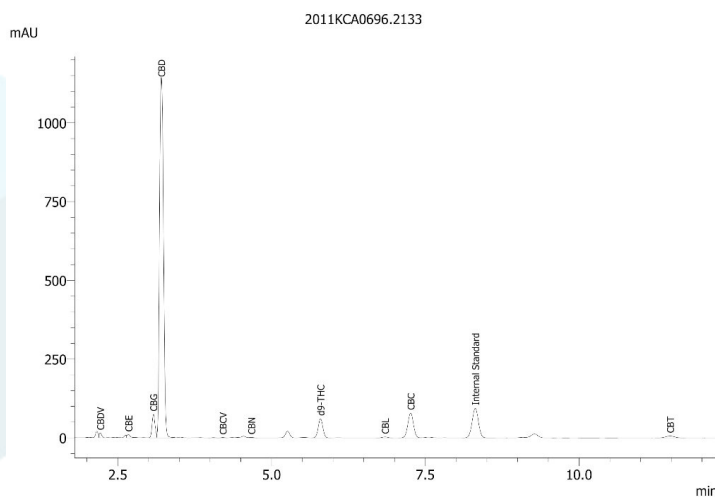
Test	Date Tested	Result
Cannabinoids	11/23/2020	Complete
Residual Solvents	11/24/2020	Complete
Pesticides	11/30/2020	Complete
Heavy Metals	11/24/2020	Complete

Cannabinoids by HPLC-PDA

Complete

3.1389%	82.7664%	94.1473%	NT Not Tested	Not Tested
Total THC	Total CBD	Total Cannabinoids	Moisture Content	Foreign Matter

Analyte	LOD %	LOQ %	Result %	Result mg/g
CBC	0.0095	0.0284	4.2263	42.263
CBCA	0.0181	0.0543	ND	ND
CBCV	0.0060	0.0180	0.0426	0.426
CBD	0.0081	0.0242	82.7664	827.664
CBDA	0.0043	0.0130	ND	ND
CBDV	0.0061	0.0182	0.3912	3.912
CBDVA	0.0021	0.0063	ND	ND
CBE	0.0131	0.0316	0.5183	5.183
CBG	0.0057	0.0172	2.3936	23.936
CBGA	0.0049	0.0147	ND	ND
CBL	0.0112	0.0335	0.1429	1.429
CBLA	0.0124	0.0371	ND	ND
CBN	0.0056	0.0169	0.0405	0.405
CBNA	0.0060	0.0181	ND	ND
CBT	0.0090	0.0211	0.4866	4.866
Δ8-THC	0.0104	0.0312	ND	ND
Δ9-THC	0.0076	0.0227	3.1389	31.389
THCA	0.0084	0.0251	ND	ND
THCV	0.0069	0.0206	ND	ND
THCVA	0.0062	0.0186	ND	ND
Total THC			3.1389	31.389
Total CBD			82.7664	827.664
Total			93.1424	931.424



Total THC = THCA * 0.877 + Δ9-THC
Total CBD = CBDA * 0.877 + CBD
LOD = Limit of Detection
LOQ = Limit of Quantitation
ND = None Detected

For plant material, the reported result is based on a sample weight with the applicable moisture content for that sample.



Wes Rogers
Principal Scientist
11/30/2020

SAN02DR01

Sample ID: 2011KCA0696.2133

Cultivar: N/A

Matrix: Concentrates & Extracts

Type: Distillate

Sample Size:

Received: 11/19/2020

Completed: 11/30/2020

Batch#: N/A

Client

Shyne Labs

Lic.#

480 Reasonover Drive

Franklin, KY 42134



Heavy Metals by ICP-MS

Complete

Analyte	LOD µg/g	LOQ µg/g	Mass µg/g
Arsenic	0.002	0.02	ND
Cadmium	0.001	0.02	ND
Lead	0.002	0.02	ND
Mercury	0.012	0.05	ND

Date Tested: 11/24/2020
LOD = Limit of Detection
LOQ = Limit of Quantitation
ND = None Detected




Wes Rogers
Principal Scientist
11/30/2020

SAN02DR01

Sample ID: 2011KCA0696.2133

Cultivar: N/A

Matrix: Concentrates & Extracts

Type: Distillate

Sample Size:

Received: 11/19/2020

Completed: 11/30/2020

Batch#: N/A

Client

Shyne Labs

Lic.#

480 Reasonover Drive

Franklin, KY 42134

Pesticides by LCMS/MS & GCMS/MS

Complete

Analyte	LOD PPM	LOQ PPM	Mass PPM	Analyte	LOD PPM	LOQ PPM	Mass PPM
Abamectin	0.001	0.005	ND	Imazalil	0.001	0.005	ND
Acephate	0.001	0.005	ND	Imidacloprid	0.001	0.005	ND
Acetamiprid	0.001	0.005	ND	Kresoxim Methyl	0.001	0.005	ND
Aldicarb	0.001	0.005	ND	Malathion	0.001	0.005	ND
Azoxystrobin	0.001	0.005	ND	Metalaxyl	0.001	0.005	ND
Bifenazate	0.001	0.005	ND	Methiocarb	0.001	0.005	ND
Bifenthrin	0.001	0.005	ND	Methomyl	0.001	0.005	ND
Boscalid	0.001	0.005	ND	Mevinphos	0.001	0.005	ND
Carbaryl	0.001	0.005	ND	Myclobutanil	0.001	0.005	ND
Carbofuran	0.001	0.005	ND	Naled	0.001	0.005	ND
Chlorantraniliprole	0.001	0.005	ND	Oxamyl	0.001	0.005	ND
Chlorpyrifos	0.001	0.005	ND	Pacllobutrazol	0.001	0.005	ND
Clofentezine	0.001	0.005	ND	Permethrin	0.001	0.005	ND
Coumaphos	0.001	0.005	ND	Phosmet	0.001	0.005	ND
Daminozide	0.001	0.005	ND	Piperonyl Butoxide	0.001	0.005	ND
Diazinon	0.001	0.005	ND	Prallethrin	0.001	0.005	ND
Dimethoate	0.001	0.005	ND	Propiconazole	0.001	0.005	ND
Dimethomorph	0.001	0.005	ND	Propoxur	0.001	0.005	ND
Ethoprophos	0.001	0.005	ND	Pyridaben	0.001	0.005	ND
Etofenprox	0.001	0.005	ND	Spinetoram	0.001	0.005	ND
Etoxazole	0.001	0.005	ND	Spinosad	0.001	0.005	ND
Fenhexamid	0.001	0.005	ND	Spiromesifen	0.001	0.005	ND
Fenoxycarb	0.001	0.005	ND	Spirotetramat	0.001	0.005	ND
Fenpyroximate	0.001	0.005	ND	Spiroxamine	0.001	0.005	ND
Fipronil	0.001	0.005	ND	Tebuconazole	0.001	0.005	ND
Flonicamid	0.001	0.005	ND	Thiacloprid	0.001	0.005	ND
Fludioxonil	0.001	0.005	ND	Thiamethoxam	0.001	0.005	ND
Hexythiazox	0.001	0.005	ND	Trifloxystrobin	0.001	0.005	ND

Date Tested: 11/24/2020
LOD = Limit of Detection
LOQ = Limit of Quantitation
ND = None Detected




Wes Rogers
Principal Scientist
11/30/2020

SAN02DR01

Sample ID: 2011KCA0696.2133

Cultivar: N/A

Matrix: Concentrates & Extracts

Type: Distillate

Sample Size:

Received: 11/19/2020

Completed: 11/30/2020

Batch#: N/A

Client

Shyne Labs

Lic.#

480 Reasonover Drive

Franklin, KY 42134

Residual Solvents by HS-GC/MS

Complete

Analyte	LOD PPM	LOQ PPM	Mass PPM	Analyte	LOD PPM	LOQ PPM	Mass PPM
Acetone	0.5	1	ND	Heptane	0.5	1	ND
Acetonitrile	0.5	1	ND	Isobutane	0.5	1	ND
Benzene	0.5	1	ND	Isopropanol	0.5	1	ND
Butane	0.5	1	ND	Isopropyl-Acetate	0.5	1	ND
1-Butanol	0.5	1	ND	2-Methyl-Butane	0.5	1	ND
2-Butanol	0.5	1	ND	2-Methyl-Pentane	0.5	1	ND
2-Butanone	0.5	1	ND	3-Methyl-Pentane	0.5	1	ND
Chloroform	0.5	1	ND	Methylene-Chloride	0.5	1	ND
Cumene	0.5	1	ND	N,N-Dimethyl-Acetamide	0.5	1	ND
Cyclohexane	0.5	1	ND	N,N-Dimethyl-Formamide	0.5	1	ND
1,2-Dichloro-Ethane	0.5	1	ND	Neopentane	0.5	1	ND
1,2-Dimethoxy-Ethane	0.5	1	ND	1-Pentanol	0.5	1	ND
2,2-Dimethyl-Butane	0.5	1	ND	Propane	0.5	1	ND
2,3-Dimethyl-Butane	0.5	1	ND	1-Propanol	0.5	1	ND
Dimethyl sulfoxide	0.5	1	ND	Pyridine	0.5	1	ND
1,4-Dioxane	0.5	1	ND	Sulfolane	0.5	1	ND
Ethanol	0.5	1	2.528	Tetrahydrofuran	0.5	1	ND
2-Ethoxy-Ethanol	0.5	1	ND	Toluene	0.5	1	ND
Ethyl-Acetate	0.5	1	ND	Trichloroethene	0.5	1	ND
Ethyl-Benzene	0.5	1	ND	Xylenes	0.5	1	ND
Ethyl-Ether	0.5	1	ND	n-Hexane	0.5	1	ND
Ethylene glycol	0.5	1	ND	n-Pentane	0.5	1	ND
Ethylene oxide	0.5	1	ND				

Date Tested: 11/24/2020
LOD = Limit of Detection
LOQ = Limit of Quantitation
ND = None Detected




Wes Rogers
Principal Scientist
11/30/2020