



Certificate of Analysis

Sample: CE20113005-001
Harvest/Lot ID: N/A
Batch#: 0122.1.1-4
Metric Source Package #: N/A
Metric #: N/A
Batch Date: N/A
Sample Size Received: 2 gram
Total Weight/Volume: N/A
Retail Product Size: N/A gram
Ordered : 01/13/22
sampled : 01/13/22
Completed: 01/19/22 Expires: 01/19/23
Sampling Method: SOP-024

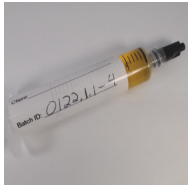
Jan 19, 2022 | 7th Gen Farms LLC

License # R&D (AG-R1076852IHH)
636 Dutton Rd
Eagle Point, OR, 97524, US



Page 1 of 7

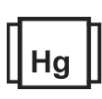
PRODUCT IMAGE



SAFETY RESULTS



Pesticides
TESTED



Heavy Metals
NOT TESTED



Microbials
NOT TESTED



Mycotoxins
NOT TESTED



Residuals Solvents
TESTED



Filtration
NOT TESTED



Water Activity
NOT TESTED



Moisture
NOT TESTED



Homogeneity
NOT TESTED



Terpenes
NOT TESTED

CANNABINOID RESULTS



Total THC
2.904%



Total CBD
83.962%



Total Cannabinoids
95.392%

	CBDV	CBDVA	CBG	CBD	CBDA	THCV	CBGA	CBN	D9-THC	D8-THC	THCVA	CBC	THCA	CBCA
%	0.827	<LOQ	4.732	83.962	<LOQ	<LOQ	<LOQ	0.133	2.904	<LOQ	<LOQ	2.834	<LOQ	<LOQ
mg/g	8.27	<LOQ	47.32	839.62	<LOQ	<LOQ	<LOQ	1.33	29.04	<LOQ	<LOQ	28.34	<LOQ	<LOQ
LOQ	0.1	0.1	0.1	0.1	0.1	0.1	0.1	0.1	0.1	0.1	0.1	0.1	0.1	0.1
	%	%	%	%	%	%	%	%	%	%	%	%	%	%

Cannabinoid Profile Test

Analyzed by 11	Weight 0.406g	Extraction date : 01/14/22 03:01:33	Extracted By : 14
Analysis Method -SOP.T.40.020, SOP.T.30.050	Reviewed On - 01/18/22 13:05:26	Batch Date : 01/14/22 14:55:00	
Analytical Batch -CE000711POT	Instrument Used : HPLC 2030 EID 005 - High Concentration	Running On : 01/14/22 16:21:30	

Reagent	Dilution	Consums. ID	Consums. ID
010322.06	800	D01493069 32009E-1232 436020160A53 436020338A52 436021005A53 C0000642 041CD-041C 042C4-042AL	F148560 0325891

"Total THC" and "Total CBD" are calculated values and are an Oregon reporting requirement (OAR 333-064-0100). For Cannabinoid analysis, only delta 9-THC, THCA, CBD, CBDA are ORELAP accredited analytes. Cannabinoid values reported for plant matter are dry weight corrected; Instrument LOQ for all cannabinoids is 0.5 mg/mL, LOQ 'in matrix' is dependent on extraction parameters. FD = Field Duplicate; LOQ = Limit of Quantitation.

This report shall not be reproduced, unless in its entirety, without written approval from Kaycha Labs. This report is an Kaycha Labs certification. The results relate only to the material or product analyzed. Test results are confidential unless explicitly waived otherwise. Void after 1 year from test end date. Cannabinoid content of batch material may vary depending on sampling error. IC=In-control QC parameter, NC=Non-controlled QC parameter, ND=Not Detected, NA=Not Analyzed, ppm=Parts Per Million, ppb=Parts Per Billion. Limit of Detection (LoD) and Limit of Quantitation (LoQ) are terms used to describe the smallest concentration that can be reliably measured by an analytical procedure. RPD=Reproducibility of two measurements. Action Levels are State determined thresholds variable based on uncertainty of measurement (UM) for the analyte. The UM error is available from the lab upon request. The "Decision Rule" for the pass/fail does not include the UM. The limits are based on OAR 333-007, OAR 845-025.

Anthony Smith
Lab Director
State License #
010-10166277B9D
ISO Accreditation # 99861



Signature

01/19/22

Signed On



Certificate of Analysis

7th Gen Farms LLC

636 Dutton Rd
Eagle Point, OR, 97524, US
Telephone: (551) 427-4515
Email: joseph@focushempco.com
License#: R&D (AG-R1076852IHH)

Sample : CE20113005-001
Harvest/Lot ID: N/A

Batch# : 0122.1.1-4
Sampled : 01/13/22
Ordered : 01/13/22

Sample Size Received : 2 gram
Total Weight/Volume : N/A
Completed : 01/19/22 Expires: 01/19/23
Sample Method : SOP-024

Page 2 of 7



Pesticides

TESTED

Pesticides	LOQ	Units	Action Level	Result	Pesticides	LOQ	Units	Action Level	Result
ABAMECTIN	0.25	ppm	0.5	<LOQ	SPINOSAD	0.1	ppm	0.2	<LOQ
ACEPHATE	0.2	ppm	0.4	<LOQ	SPIROMESIFEN	0.1	ppm	0.2	<LOQ
ACEQUINOXYL	1	ppm	2	<LOQ	SPIROTRAMAT	0.1	ppm	0.2	<LOQ
ACETAMIPRID	0.1	ppm	0.2	<LOQ	SPIROXAMINE	0.2	ppm	0.4	<LOQ
ALDICARB	0.2	ppm	0.4	<LOQ	TEBUCONAZOLE	0.2	ppm	0.4	<LOQ
AZOXYSTROBIN	0.1	ppm	0.2	<LOQ	THIACLOPRID	0.1	ppm	0.2	<LOQ
BIFENAZATE	0.1	ppm	0.2	<LOQ	THIAMETHOXAM	0.1	ppm	0.2	<LOQ
BIFENTHRIN	0.1	ppm	0.2	<LOQ	TRIFLOXYSTROBIN	0.1	ppm	0.2	<LOQ
BOSCALID	0.2	ppm	0.4	<LOQ	MGK-264 *	0.1	ppm	0.2	<LOQ
CARBARYL	0.1	ppm	0.2	<LOQ	METHYL PARATHION *	0.1	ppm	0.2	<LOQ
CARBOFURAN	0.1	ppm	0.2	<LOQ	CYPERMETHRIN *	0.5	ppm	1	<LOQ
CHLORANTRANILIPROLE	0.1	ppm	0.2	<LOQ	CYFLUTHRIN *	0.5	ppm	1	<LOQ
CHLORPYRIFOS	0.1	ppm	0.2	<LOQ	CHLORFENAPYR *	0.5	ppm	0.5	<LOQ
CLOFENTEZINE	0.1	ppm	0.2	<LOQ					
DAMINOZIDE	0.5	ppm	1	<LOQ					
DDVP (DICHLORVOS)	0.5	ppm	1	<LOQ					
DIAZINON	0.1	ppm	0.2	<LOQ					
DIMETHOATE	0.1	ppm	0.2	<LOQ					
ETHOPROPHOS	0.1	ppm	0.2	<LOQ					
ETOFENPROX	0.2	ppm	0.4	<LOQ					
ETOXAZOLE	0.1	ppm	0.2	<LOQ					
FENOXYCARB	0.1	ppm	0.2	<LOQ					
FENPYROXIMATE	0.2	ppm	0.4	<LOQ					
FIPRONIL	0.2	ppm	0.4	<LOQ					
FLONICAMID	0.5	ppm	1	<LOQ					
FLUDIOXONIL	0.2	ppm	0.4	<LOQ					
HEXYTHIAZOX	0.5	ppm	1	<LOQ					
IMAZALIL	0.1	ppm	0.2	<LOQ					
IMIDACLOPRID	0.2	ppm	0.4	<LOQ					
KRESOXIM-METHYL	0.2	ppm	0.4	<LOQ					
MALATHION	0.1	ppm	0.2	<LOQ					
METALAXYL	0.1	ppm	0.2	<LOQ					
METHIOCARB	0.1	ppm	0.2	<LOQ					
METHOMYL	0.2	ppm	0.4	<LOQ					
MYCLOBUTANIL	0.1	ppm	0.2	<LOQ					
NALED	0.25	ppm	0.5	<LOQ					
OXAMYL	0.5	ppm	1	<LOQ					
PACLOBUTRAZOL	0.2	ppm	0.4	<LOQ					
PERMETHRINS	0.1	ppm	0.2	<LOQ					
PHOSMET	0.1	ppm	0.2	<LOQ					
PIPERONYL BUTOXIDE	1	ppm	2	<LOQ					
PRALLETHRIN	0.1	ppm	0.2	<LOQ					
PROPICONAZOLE	0.2	ppm	0.4	<LOQ					
PROPOXUR	0.1	ppm	0.2	<LOQ					
PYRETHRINS	0.5	ppm	1	<LOQ					
PYRIDABEN	0.1	ppm	0.2	<LOQ					

Pesticides **TESTED**

Analyzed by 11, 12	Weight 0.526g	Extraction date 01/14/22 04:01:18	Extracted By 14, 14
Analysis Method - SOP.T.30.060, SOP.T.40.060			
Analytical Batch - CE000713PES, CE000714VOL			
Instrument Used : LCMSMS 8050 EID:0081-0085, GCMS-TQ8040 EID:0133			
Running On : 01/17/22 13:54:47, 01/17/22 13:51:18 Batch Date : 01/14/22 16:10:41			
Reagent 10222.N01	Dilution 10	Consums. ID D01493069 32009E-1232 436020160AS3 436020338AS2 436021005AS3 C0000642 041CD-041C 9792001 0325891	
Samples prepared and quantitatively analyzed by LC-MS/MS & GC-MS/MS. Results above the action level fail Oregon state testing requirements for cannabis and hemp. LOQ= Limit of Quantitation; PPM= Parts per million; ND= Not detected; NA= Not analyzed; ppm=Parts Per Million, ppb=Parts Per Billion. Limit of Detection (LoD) and Limit of Quantitation (LoQ) are terms used to describe the smallest concentration that can be reliably measured by an analytical procedure. RPD=Reproducibility of two measurements. Action Levels are State determined thresholds variable based on uncertainty of measurement (UM) for the analyte. The UM error is available from the lab upon request. The "Decision Rule" for the pass/fail does not include the UM. The limits are based on OAR 333-007, OAR 845-025.			

This report shall not be reproduced, unless in its entirety, without written approval from Kaycha Labs. This report is an Kaycha Labs certification. The results relate only to the material or product analyzed. Test results are confidential unless explicitly waived otherwise. Void after 1 year from test end date. Cannabinoid content of batch material may vary depending on sampling error. IC=In-control QC parameter, NC=Non-controlled QC parameter, ND=Not Detected, NA=Not Analyzed, ppm=Parts Per Million, ppb=Parts Per Billion. Limit of Detection (LoD) and Limit of Quantitation (LoQ) are terms used to describe the smallest concentration that can be reliably measured by an analytical procedure. RPD=Reproducibility of two measurements. Action Levels are State determined thresholds variable based on uncertainty of measurement (UM) for the analyte. The UM error is available from the lab upon request. The "Decision Rule" for the pass/fail does not include the UM. The limits are based on OAR 333-007, OAR 845-025.

Anthony Smith
Lab Director
State License #
010-10166277B9D
ISO Accreditation # 99861



Signature

01/19/22

Signed On



Certificate of Analysis

7th Gen Farms LLC

 636 Dutton Rd
 Eagle Point, OR, 97524, US
Telephone: (551) 427-4515
Email: joseph@focushempco.com
License#: R&D (AG-R1076852IHH)

Sample : CE20113005-001
Harvest/Lot ID: N/A
Batch# : 0122.1.1-4
Sampled : 01/13/22
Ordered : 01/13/22
Sample Size Received : 2 gram
Total Weight/Volume : N/A
Completed : 01/19/22 Expires: 01/19/23
Sample Method : SOP-024
Page 3 of 7

	Residual Solvents	TESTED
---	--------------------------	---------------

	Residual Solvents	TESTED
---	--------------------------	---------------

Solvent	LOQ	Units	Action Level	Pass/Fail	Result
1-4 DIOXANE	190	ppm	380	R&D	<LOQ
2-BUTANOL	2500	ppm	5000	R&D	<LOQ
2-ETHOXYETHANOL	80	ppm	160	R&D	<LOQ
2-PROPANOL	2500	ppm	5000	R&D	<LOQ
ACETONE	2500	ppm	5000	R&D	<LOQ
ACETONITRILE	205	ppm	410	R&D	<LOQ
BENZENE	1	ppm	2	R&D	<LOQ
BUTANES	1250	ppm	5000	R&D	<LOQ
CUMENE	35	ppm	70	R&D	<LOQ
CYCLOHEXANE	1940	ppm	3880	R&D	<LOQ
DICHLOROMETHANE	300	ppm	600	R&D	<LOQ
ETHANOL	500	ppm	1000000	R&D	<LOQ
ETHYL ACETATE	2500	ppm	5000	R&D	<LOQ
ETHYL ETHER	2500	ppm	5000	R&D	<LOQ
ETHYLENE GLYCOL	310	ppm	620	R&D	<LOQ
ETHYLENE OXIDE	25	ppm	50	R&D	<LOQ
HEPTANE	2500	ppm	5000	R&D	<LOQ
HEXANES	15	ppm	290	R&D	<LOQ
ISOPROPYL ACETATE	2500	ppm	5000	R&D	<LOQ
METHANOL	1500	ppm	3000	R&D	<LOQ
PENTANES	833	ppm	5000	R&D	<LOQ
PROPANE	2500	ppm	5000	R&D	<LOQ
TETRAHYDROFURAN	360	ppm	720	R&D	<LOQ
TOLUENE	445	ppm	890	R&D	<LOQ
XYLENES	271	ppm	2170	R&D	<LOQ

Analyzed by	Weight	Extraction date	Extracted By
12	0.022g	01/13/22 03:01:50	12

Analysis Method -Residual solvents screening is performed using GC-MS to OAR 333-007-0410 specification.

Analytical Batch -CE000707SOL Reviewed On - 01/14/22 10:53:04

Instrument Used : GCMS-QP2020 EID:0170

Running On : 01/13/22 15:04:02

Batch Date : 01/13/22 15:00:27

Reagent	Dilution	Consums. ID
	1	

Residual solvents screening is performed using GC-MS to OAR 333-007-0410 specification. *Ethanol is not an accredited analyte and not an OAR 333-007-0410 requirement; There is no action limit and is only tested and reported as a courtesy.



POTENCY BATCH QC REPORT

 **METHOD BLANK**

Cannabinoid	LOQ	Result	Units
CBDV_WET	0.1	0	%
CBDVA_WET	0.1	0	%
THCV_WET	0.1	0	%
CBD_WET	0.1	0	%
CBG_WET	0.1	0	%
CBDA_WET	0.1	0	%
CBN_WET	0.1	0	%
CBGA_WET	0.1	0	%
THCVA_WET	0.1	0	%
D9-THC_WET	0.1	0	%
D8-THC_WET	0.1	0	%
CBC_WET	0.1	0	%
THCA_WET	0.1	0	%
CBC-A_WET	0.1	0	%
TOTAL THC	0.1	0	%
TOTAL CBD	0.1	0	%
TOTAL CANNABINOIDS	0.1	0	%
CBDV	0.1	0	%
CBDVA	0.1	0	%
CBG	0.1	0	%
CBD	0.1	0	%
CBDA	0.1	0	%
THCV	0.1	0	%
CBGA	0.1	0	%
CBN	0.1	0	%
D9-THC	0.1	0	%
D8-THC	0.1	0	%
THCVA	0.1	0	%
CBC	0.1	0	%
THCA	0.1	0	%
CBCA	0.1	0	%

Analytical Batch - CE000711POT
Instrument Used : HPLC 2030 EID 005 - High Concentration

 **LCS**

Cannabinoid	LOQ	Recovery	Units	Recovery Limits
CBG_WET	0.1	109.7	%	70-130
CBD_WET	0.1	107.8	%	70-130
CBDA_WET	0.1	108.3	%	70-130
THCV_WET	0.1	0	%	70-130
CBGA_WET	0.1	100.9	%	70-130
CBN_WET	0.1	108.7	%	70-130
D9-THC_WET	0.1	106.2	%	70-130
CBC_WET	0.1	106.7	%	70-130
THCA_WET	0.1	100	%	70-130
CBC-A_WET	0.1	100.4	%	70-130

Analytical Batch - CE000711POT
Instrument Used : HPLC 2030 EID 005 - High Concentration

This report shall not be reproduced, unless in its entirety, without written approval from Kaycha Labs. This report is an Kaycha Labs certification. The results relate only to the material or product analyzed. Test results are confidential unless explicitly waived otherwise. Void after 1 year from test end date. Cannabinoid content of batch material may vary depending on sampling error. IC=In-control QC parameter, NC=Non-controlled QC parameter, ND=Not Detected, NA=Not Analyzed, ppm=Parts Per Million, ppb=Parts Per Billion. Limit of Detection (LoD) and Limit Of Quantitation (LoQ) are terms used to describe the smallest concentration that can be reliably measured by an analytical procedure. RPD=Reproducibility of two measurements. Action Levels are State determined thresholds variable based on uncertainty of measurement (UM) for the analyte. The UM error is available from the lab upon request. The "Decision Rule" for the pass/fail does not include the UM. The limits are based on OAR 333-007, OAR 845-025.

Anthony Smith
Lab Director
State License #
010-10166277B9D
ISO Accreditation # 99861



Signature

01/19/22

Signed On



SOLVENT BATCH QC REPORT

 **METHOD BLANK**

Residual	LOQ	Result	Units
PROPANE	2500	<LOQ	ppm
METHANOL	1500	<LOQ	ppm
ETHYLENE OXIDE	25	<LOQ	ppm
ETHANOL	500	<LOQ	ppm
ETHYL ETHER	2500	<LOQ	ppm
ACETONE	2500	<LOQ	ppm
2-PROPANOL	2500	<LOQ	ppm
ACETONITRILE	205	<LOQ	ppm
DICHLOROMETHANE	300	<LOQ	ppm
ETHYL ACETATE	2500	<LOQ	ppm
2-BUTANOL	2500	<LOQ	ppm
TETRAHYDROFURAN	360	<LOQ	ppm
CYCLOHEXANE	1940	<LOQ	ppm
ISOPROPYL ACETATE	2500	<LOQ	ppm
BENZENE	1	<LOQ	ppm
HEPTANE	2500	<LOQ	ppm
1-4 DIOXANE	190	<LOQ	ppm
2-ETHOXYETHANOL	80	<LOQ	ppm
ETHYLENE GLYCOL	310	<LOQ	ppm
TOLUENE	445	<LOQ	ppm
CUMENE	35	<LOQ	ppm
XYLENES	271	<LOQ	ppm
BUTANES	1250	<LOQ	ppm
HEXANES	15	<LOQ	ppm
PENTANES	833	<LOQ	ppm

Analytical Batch - CE000707SOL
Instrument Used : GCMS-QP2020 EID:0170

 **LCS**

Residual	LOQ	Recovery	Units	Recovery Limits
1-4 DIOXANE	190	111.8	ppm	50-150
2-BUTANOL	2500	106	ppm	50-150
2-ETHOXYETHANOL	80	106.9	ppm	50-150
2-PROPANOL	2500	107	ppm	50-150
ACETONE	2500	111.5	ppm	50-150
ACETONITRILE	205	109.2	ppm	50-150
BENZENE	1	104.6	ppm	50-150
CUMENE	35	121.8	ppm	50-150
CYCLOHEXANE	1940	114.1	ppm	50-150
DICHLOROMETHANE	300	110.9	ppm	50-150
ETHANOL	500	113.2	ppm	50-150
ETHYL ACETATE	2500	111.1	ppm	50-150
ETHYL ETHER	2500	108.4	ppm	50-150
ETHYLENE GLYCOL	310	104.2	ppm	50-150
HEPTANE	2500	107.8	ppm	50-150
ISOPROPYL ACETATE	2500	112.9	ppm	50-150
METHANOL	1500	107.3	ppm	50-150
TETRAHYDROFURAN	360	108.7	ppm	50-150
TOLUENE	445	108.7	ppm	50-150

Analytical Batch - CE000707SOL
Instrument Used : GCMS-QP2020 EID:0170

This report shall not be reproduced, unless in its entirety, without written approval from Kaycha Labs. This report is an Kaycha Labs certification. The results relate only to the material or product analyzed. Test results are confidential unless explicitly waived otherwise. Void after 1 year from test end date. Cannabinoid content of batch material may vary depending on sampling error. IC=In-control QC parameter, NC=Non-controlled QC parameter, ND=Not Detected, NA=Not Analyzed, ppm=Parts Per Million, ppb=Parts Per Billion. Limit of Detection (LoD) and Limit of Quantitation (LoQ) are terms used to describe the smallest concentration that can be reliably measured by an analytical procedure. RPD=Reproducibility of two measurements. Action Levels are State determined thresholds variable based on uncertainty of measurement (UM) for the analyte. The UM error is available from the lab upon request. The "Decision Rule" for the pass/fail does not include the UM. The limits are based on OAR 333-007, OAR 845-025.

Anthony Smith
Lab Director
State License #
010-10166277B9D
ISO Accreditation # 99861



Signature

01/19/22

Signed On



PESTICIDES BATCH QC REPORT



METHOD BLANK

Pesticides	LOQ	Result	Units	Pesticides	LOQ	Result	Units
DAMINOZIDE	0.5	<LOQ	ppm	ABAMECTIN	0.25	<LOQ	ppm
ACEPHATE	0.2	<LOQ	ppm	ETOFENPROX	0.2	<LOQ	ppm
FLONICAMID	0.5	<LOQ	ppm	BIFENTHRIN	0.1	<LOQ	ppm
OXAMYL	0.5	<LOQ	ppm	FLUDIOXONIL	0.2	<LOQ	ppm
METHOMYL	0.2	<LOQ	ppm	FIPRONIL	0.2	<LOQ	ppm
THIAMETHOXAM	0.1	<LOQ	ppm	ACEQUINOCYL	1	<LOQ	ppm
IMIDACLOPRID	0.2	<LOQ	ppm	SPINOSAD	0.1	<LOQ	ppm
DIMETHOATE	0.1	<LOQ	ppm	PYRETHRINS	0.5	<LOQ	ppm
ACETAMIPRID	0.1	<LOQ	ppm				
THIACLOPRID	0.1	<LOQ	ppm				
ALDICARB	0.2	<LOQ	ppm				
DDVP (DICHLORVOS)	0.5	<LOQ	ppm				
PROPOXUR	0.1	<LOQ	ppm				
CARBOFURAN	0.1	<LOQ	ppm				
CARBARYL	0.1	<LOQ	ppm				
IMAZALIL	0.1	<LOQ	ppm				
METALAXYL	0.1	<LOQ	ppm				
CHLORANTRANILIPROLE	0.1	<LOQ	ppm				
PHOSMET	0.1	<LOQ	ppm				
SPIROXAMINE	0.2	<LOQ	ppm				
NALED	0.25	<LOQ	ppm				
METHIOCARB	0.1	<LOQ	ppm				
AZOXYSTROBIN	0.1	<LOQ	ppm				
BOSCALID	0.2	<LOQ	ppm				
PACLOBUTRAZOL	0.2	<LOQ	ppm				
MALATHION	0.1	<LOQ	ppm				
MYCLOBUTANIL	0.1	<LOQ	ppm				
BIFENAZATE	0.1	<LOQ	ppm				
SPIROTETRAMAT	0.1	<LOQ	ppm				
ETHOPROPHOS	0.1	<LOQ	ppm				
FENOXYCARB	0.1	<LOQ	ppm				
KRESOXIM-METHYL	0.2	<LOQ	ppm				
TEBUCONAZOLE	0.2	<LOQ	ppm				
DIAZINON	0.1	<LOQ	ppm				
PROPICONAZOLE	0.2	<LOQ	ppm				
CLOFENTEZINE	0.1	<LOQ	ppm				
PRALLETHRIN	0.1	<LOQ	ppm				
TRIFLOXYSTROBIN	0.1	<LOQ	ppm				
PIPERONYL BUTOXIDE	1	<LOQ	ppm				
CHLORPYRIFOS	0.1	<LOQ	ppm				
HEXYTHIAZOX	0.5	<LOQ	ppm				
ETOXAZOLE	0.1	<LOQ	ppm				
SPIROMESIFEN	0.1	<LOQ	ppm				
FENPYROXIMATE	0.2	<LOQ	ppm				
PYRIDABEN	0.1	<LOQ	ppm				
PERMETHRINS	0.1	<LOQ	ppm				



Pesticides

Analyzed by	Weight	Extraction date	Extracted By
12		NA	NA
Analytical Batch - CE000713PES			
Instrument Used : LCMSMS 8050 EID:0081-0085			

This report shall not be reproduced, unless in its entirety, without written approval from Kaycha Labs. This report is an Kaycha Labs certification. The results relate only to the material or product analyzed. Test results are confidential unless explicitly waived otherwise. Void after 1 year from test end date. Cannabinoid content of batch material may vary depending on sampling error. IC=In-control QC parameter, NC=Non-controlled QC parameter, ND=Not Detected, NA=Not Analyzed, ppm=Parts Per Million, ppb=Parts Per Billion. Limit of Detection (LoD) and Limit of Quantitation (LoQ) are terms used to describe the smallest concentration that can be reliably measured by an analytical procedure. RPD=Reproducibility of two measurements. Action Levels are State determined thresholds variable based on uncertainty of measurement (UM) for the analyte. The UM error is available from the lab upon request. The "Decision Rule" for the pass/fail does not include the UM. The limits are based on OAR 333-007, OAR 845-025.

Anthony Smith
 Lab Director

 State License #
 010-10166277B9D
 ISO Accreditation # 99861

Signature

01/19/22

Signed On




PESTICIDES BATCH QC REPORT



LCS

Pesticides	LOQ	Recovery	Recovery Limits	Pesticides	LOQ	Recovery	Recovery Limits
ABAMECTIN	0.25	93	50-150	SPIROMESIFEN	0.1	118.3	50-150
ACEPHATE	0.2	101.2	50-150	SPIROTETRAMAT	0.1	100.1	50-150
ACEQUINOCYL	1	127.3	50-150	SPIROXAMINE	0.2	99.1	50-150
ACETAMIPRID	0.1	89.5	50-150	TEBUCONAZOLE	0.2	116.6	50-150
ALDICARB	0.2	119.8	50-150	THIACLOPRID	0.1	114.9	50-150
AZOXYSTROBIN	0.1	112.9	50-150	THIAMETHOXAM	0.1	107.4	50-150
BIFENAZATE	0.1	96.1	50-150	TRIFLOXYSTROBIN	0.1	90.2	50-150
BIFENTHRIN	0.1	97.1	50-150				
BOSCALID	0.2	120.6	50-150				
CARBARYL	0.1	101.2	50-150				
CARBOFURAN	0.1	112.4	50-150				
CHLORANTRANILIPROLE	0.1	100.3	50-150				
CHLORPYRIFOS	0.1	106.6	50-150				
CLOFENTEZINE	0.1	108.8	50-150				
DAMINOZIDE	0.5	110.8	50-150				
DDVP (DICHLORVOS)	0.5	106.8	50-150				
DIAZINON	0.1	105.9	50-150				
DIMETHOATE	0.1	104.1	50-150				
ETHOPROPHOS	0.1	110.6	50-150				
ETOFENPROX	0.2	108.3	50-150				
ETOXAZOLE	0.1	106	50-150				
FENOXYCARB	0.1	111.4	50-150				
FENPYROXIMATE	0.2	104.1	50-150				
FIPRONIL	0.2	117.1	50-150				
FLONICAMID	0.5	74.3	50-150				
FLUDIOXONIL	0.2	109.5	50-150				
HEXYTHIAZOX	0.5	102.7	50-150				
IMAZALIL	0.1	111.1	50-150				
IMIDACLOPRID	0.2	95.8	50-150				
KRESOXIM-METHYL	0.2	96.2	50-150				
MALATHION	0.1	106.5	50-150				
METALAXYL	0.1	90.3	50-150				
METHIOCARB	0.1	120.5	50-150				
METHOMYL	0.2	106.5	50-150				
MYCLOBUTANIL	0.1	110.5	50-150				
NALED	0.25	114.5	50-150				
OXAMYL	0.5	103	50-150				
PACLOBUTRAZOL	0.2	106.6	50-150				
PERMETHRINS	0.1	114.5	50-150				
PHOSMET	0.1	101.7	50-150				
PIPERONYL BUTOXIDE	1	99.7	50-150				
PRALLETHRIN	0.1	98.3	50-150				
PROPICONAZOLE	0.2	104.3	50-150				
PROPOXUR	0.1	93.7	50-150				
PYRETHRINS	0.5	105.2	50-150				
PYRIDABEN	0.1	106.3	50-150				



Pesticides

Analyzed by 12	Weight 0.505	Extraction date 01/14/22 04:01:19	Extracted By 14
Analytical Batch - CE000713PES			
Instrument Used : LCMSMS 8050 EID:0081-0085			

This report shall not be reproduced, unless in its entirety, without written approval from Kaycha Labs. This report is an Kaycha Labs certification. The results relate only to the material or product analyzed. Test results are confidential unless explicitly waived otherwise. Void after 1 year from test end date. Cannabinoid content of batch material may vary depending on sampling error. IC=In-control QC parameter, NC=Non-controlled QC parameter, ND=Not Detected, NA=Not Analyzed, ppm=Parts Per Million, ppb=Parts Per Billion. Limit of Detection (LoD) and Limit Of Quantitation (LoQ) are terms used to describe the smallest concentration that can be reliably measured by an analytical procedure. RPD=Reproducibility of two measurements. Action Levels are State determined thresholds variable based on uncertainty of measurement (UM) for the analyte. The UM error is available from the lab upon request. The "Decision Rule" for the pass/fail does not include the UM. The limits are based on OAR 333-007, OAR 845-025.