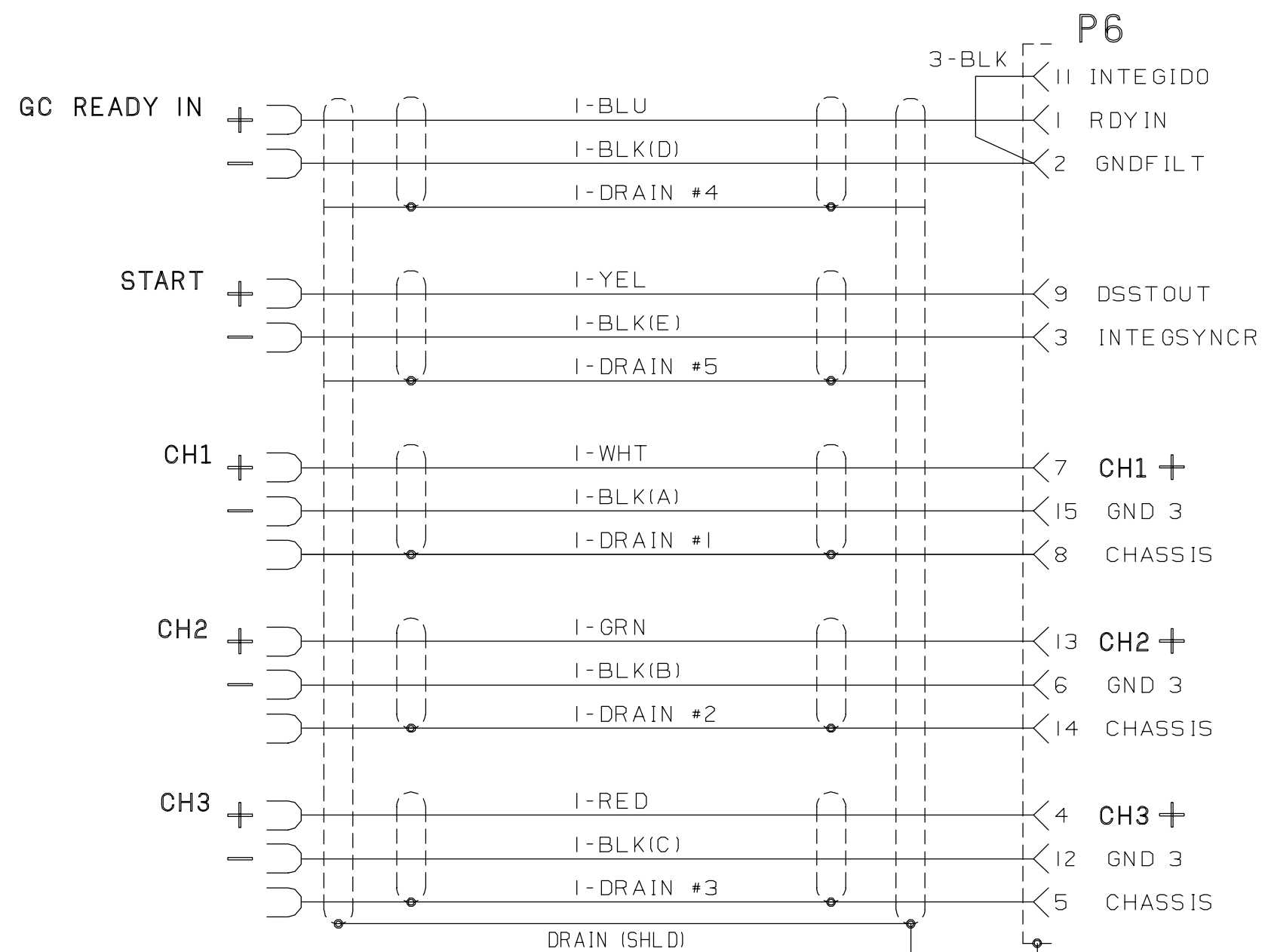
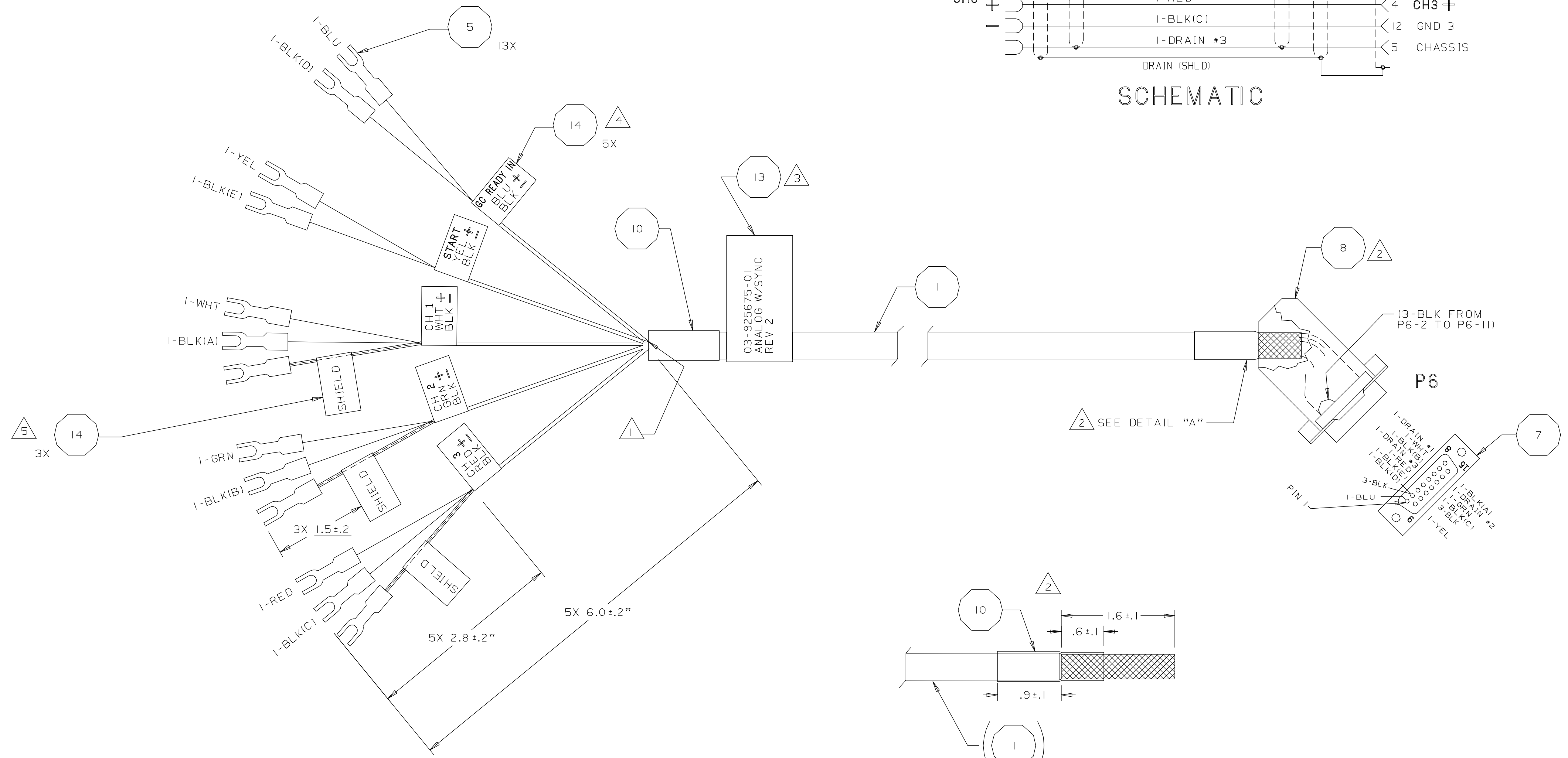


DASH NO	TYPE OR MODEL	NEXT ASSEMBLY
3800		

U/M	REQ	PART NUMBER	DESCRIPTION OR MATERIAL	ITEM
IN	120	81-815102-00	CABLE, 5 SHLD PAIR	1
				2
IN	A/R	81-714162-00	WIRE, 24AWG, BLK, CSA	3
				4
EA	13	15-647321-00	TERM, SPADE, 26-20 AWG, #6, AMBER	5
				6
EA	1	51-308714-00	CONNECTOR,"D", 15 PIN	7
EA	1	51-340857-00	SHELL, JUNCTION, 15 POS, 45°	8
				9
IN	2.5	88-488028-00	TUBING, HT SHRINK, Ø1/2", BLK	10
IN	18	88-488024-00	TUBING, HT SHRINK, Ø3/64", BLK	11
				12
EA	1	88-360101-00	LABEL, WHITE, 3 1/2 X 15/16"	13
EA	8	88-360108-00	LABEL, WHITE, 1/2 X 1 3/4"	14
				15



SCHMATIC



DETAIL "A"

- 5 MARK LABEL, ITEM 14 (3X), WITH WORD "SHIELD", PLACE OVER HEAT SHRINK COVERED WIRE, AS SHOWN.
 - 4 MARK LABEL, ITEM 14, WITH CHANNEL NUMBER OR SIGNAL NAME AS SHOWN.
 - 3 MARK LABEL, ITEM 13, WITH PART NO., DESCRIPTION & REV AS SHOWN.
 - 2 ON P6 END OF CABLE ITEM 1 REMOVE OUTER CABLE JACKET 1.6 INCHES FROM END (SEE DETAIL "A"). PLACE HEAT SHRINK TUBING ITEM 10 OVER CABLE COVERING .6 INCHES OF EXPOSED BRAID. FOLD BRAID BACK OVER SHRINK TUBING. TRIM BRAID TO COVER .6 INCHES OF SHRINK TUBING. SOLDER WIRES PER VIEW AND SCHEMATIC. CUT UNUSED DRAIN WIRE FLUSH WITH HEAT SHRINK TUBING.
 - 1 CUT FOIL, BRAID AND UNUSED DRAIN WIRES FLUSH WITH OUTER CABLE JACKET.
- NOTES:

DO NOT SCALE DRAWING

DESCRIPTION OF CHANGE	APVD	DATE
APVD	20463	
DFT	JCK	
CHK		
DATE	8 AUG 97	
REV	2	

-01	PART			
-00	DRAWING ONLY			
DASH NO.	DESCRIPTION			
DRAWN	DATE	APPROVED	DATE	CODE
JCK	15 MAY 97	ROBELLO	5-28-97	
CHECKED	DATE	APPROVED	DATE	CLASS
JS	5-22-97	R KLEE	5/29/97	
ASSY, CABLE, ANALOG W/SYNC				
NOT OTHERWISE SPEC: ANG±				
FIN. ✓ DEC .X ± .XX ± .XXX ±				
1/1	38	1 OF 1	D	03-925675-00 2
SCALE	DIV	SHEET	SIZE	DRAWING NO
				REV

