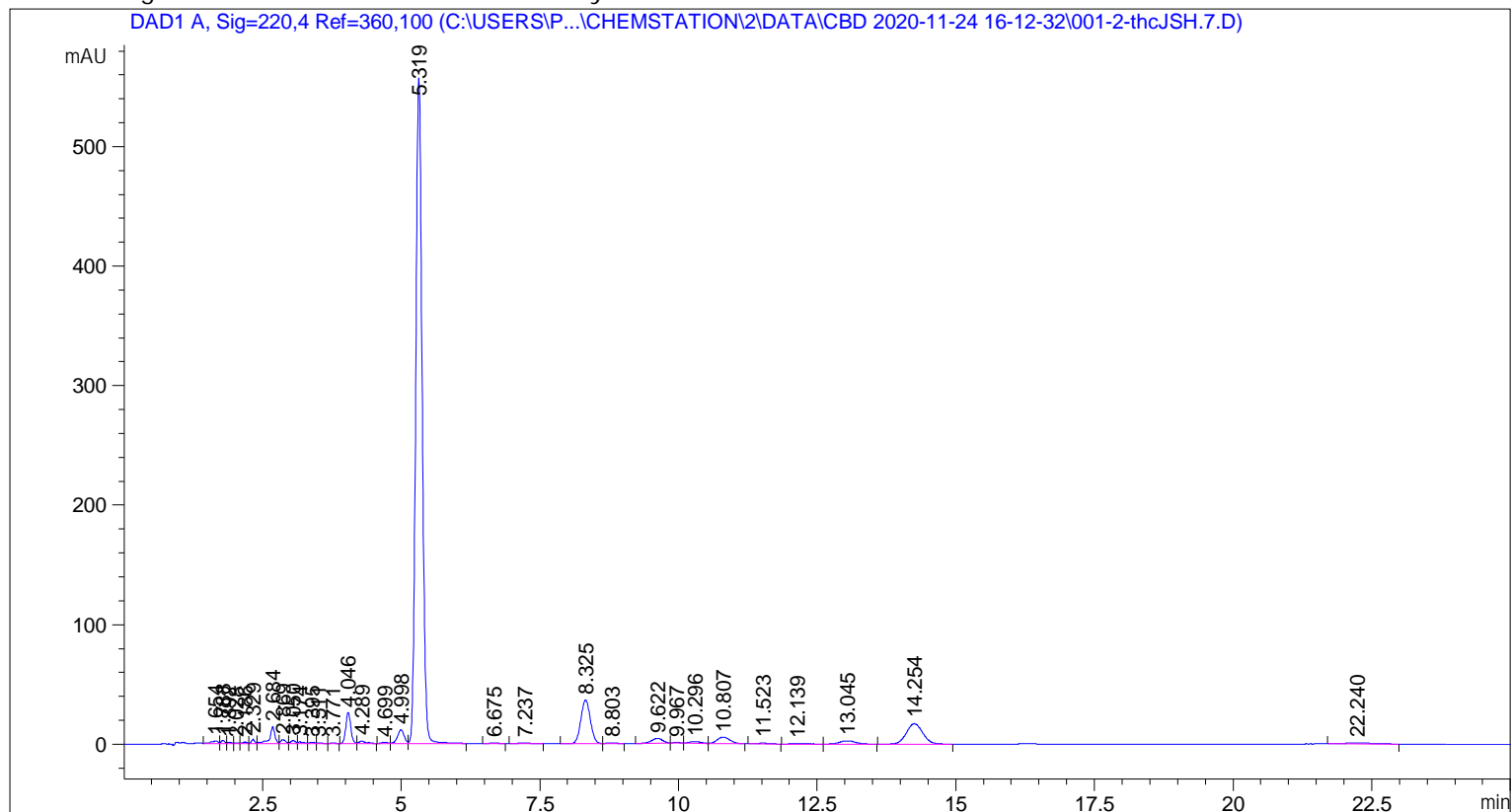


```

=====
Acq. Operator   : SYSTEM                               Seq. Line :    1
Sample Operator : SYSTEM
Acq. Instrument : 1100 LC                             Location  :    2
Injection Date  : 11/24/2020 4:15:21 PM              Inj       :    1
                                                    Inj Volume: 5.000 µl

Acq. Method    : C:\Users\Public\Documents\ChemStation\2\Data\CBD 2020-11-24 16-12-32\CBD.M
Last changed   : 5/18/2020 9:15:46 AM by SYSTEM
Analysis Method: C:\Users\Public\Documents\ChemStation\2\Methods\CBD.M
Last changed   : 12/3/2020 7:22:58 AM by SYSTEM
  
```



=====
 Area Percent Report
 =====

```

Sorted By      :      Signal
Multiplier     :      1.0000
Dilution      :      1.0000
Use Multiplier & Dilution Factor with ISTDs
  
```

Signal 1: DAD1 A, Sig=220,4 Ref=360,100

Peak #	RetTime [min]	Type	Width [min]	Area [mAU*s]	Height [mAU]	Area %
1	1.654	BH	0.1077	16.16701	2.15116	0.2692
2	1.788	HH	0.0663	10.91077	2.53191	0.1817
3	1.892	HH	0.0842	3.76978	7.30994e-1	0.0628
4	2.028	HH	0.0578	1.73384	4.84027e-1	0.0289
5	2.186	HH	0.0672	4.93111	1.12472	0.0821
6	2.329	BH	0.0630	13.26678	3.29528	0.2209
7	2.684	HH	0.0941	89.05399	14.01225	1.4829
8	2.869	HH	0.0948	18.92920	3.11861	0.3152

Sample Name: thcJSH. 7

Peak #	RetTime [min]	Type	Width [min]	Area [mAU*s]	Height [mAU]	Area %
9	3.050	HH	0.0861	13.13929	2.31771	0.2188
10	3.174	HH	0.1017	8.43535	1.14777	0.1405
11	3.395	HH	0.0914	6.02811	9.84340e-1	0.1004
12	3.511	HH	0.0781	3.09687	5.81816e-1	0.0516
13	3.771	BB	0.0831	2.10419	4.15162e-1	0.0350
14	4.046	BH	0.1001	159.45151	25.78365	2.6551
15	4.289	HB	0.1267	16.92538	1.92275	0.2818
16	4.699	BH	0.1060	7.35548	1.10067	0.1225
17	4.998	HH	0.1269	91.96209	11.30589	1.5313
18	5.319	HH	0.1255	4457.36426	556.07434	74.2220
19	6.675	HB	0.1726	6.90801	6.47018e-1	0.1150
20	7.237	BB	0.2154	11.03420	7.69059e-1	0.1837
21	8.325	BB	0.1822	433.08554	36.54901	7.2115
22	8.803	HB	0.1797	8.44357	7.71242e-1	0.1406
23	9.622	BH	0.2280	64.00166	4.34142	1.0657
24	9.967	HH	0.1743	7.64756	6.64174e-1	0.1273
25	10.296	HH	0.2197	22.06322	1.57209	0.3674
26	10.807	HB	0.2476	85.62630	5.44036	1.4258
27	11.523	BB	0.2367	9.05952	5.85067e-1	0.1509
28	12.139	BH	0.2264	4.94822	2.69265e-1	0.0824
29	13.045	BB	0.2975	51.66130	2.72072	0.8602
30	14.254	BH	0.3238	349.99490	17.02443	5.8280
31	22.240	HB	0.4740	26.34735	8.13208e-1	0.4387

Totals : 6005.44636 701.25012

=====
*** End of Report ***