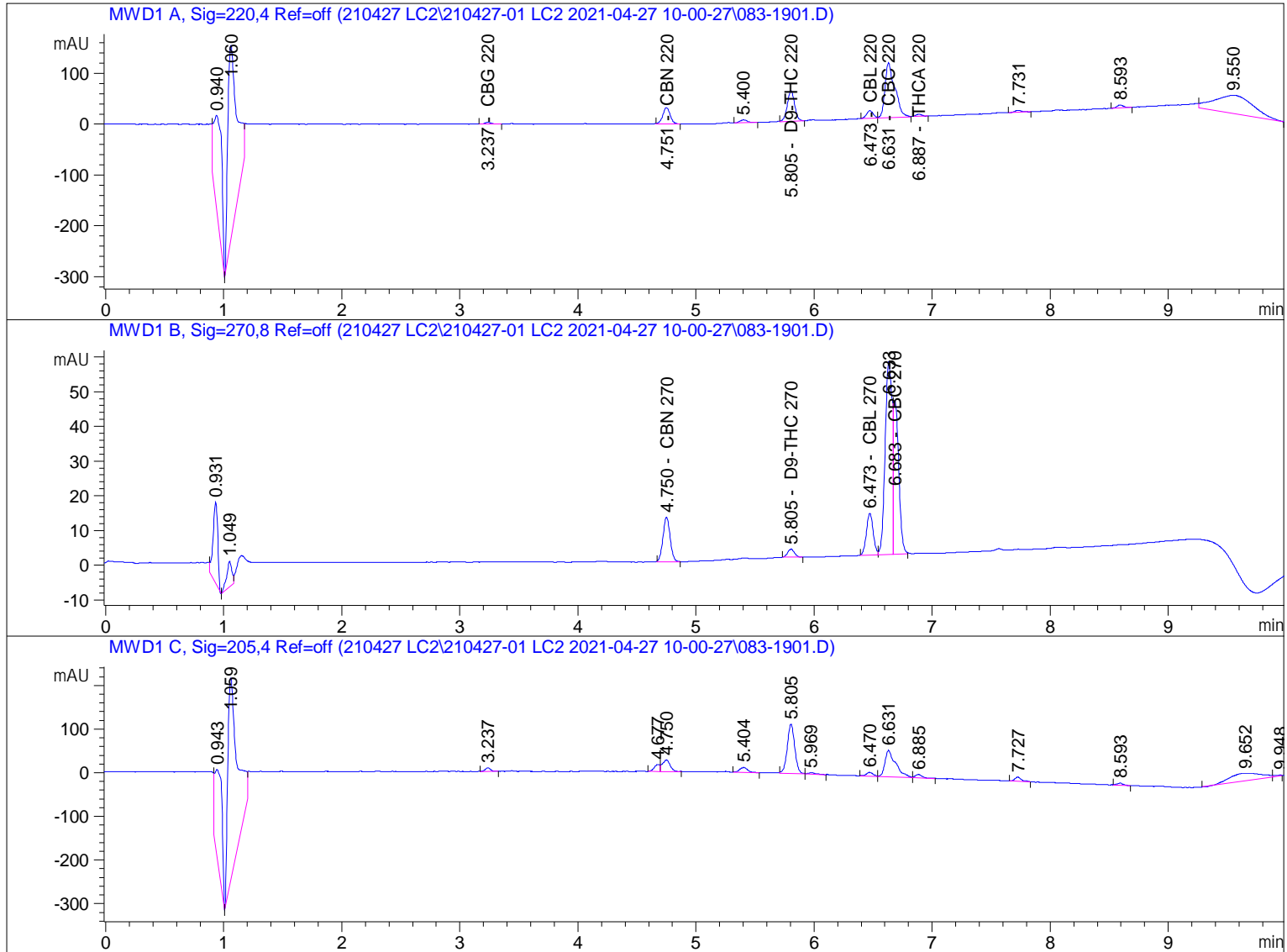


=====
Acq. Operator : DB, AF, PV, GR Seq. Line : 19
Acq. Instrument : Instrument 1 Location : Vial 83
Injection Date : 4/27/2021 1:42:56 PM Inj : 1
Inj Volume : 1.5 µl
Acq. Method : C:\CHEM32\1\DATA\210427 LC2\210427-01 LC2 2021-04-27 10-00-27\
01CANNABINOIDS.M
Last changed : 12/3/2019 12:15:28 PM
Analysis Method : C:\CHEM32\1\METHODS\210409 MWD ICAL.M
Last changed : 4/9/2021 12:44:27 PM by DB, AF, PV, GR



=====
External Standard Report
=====

Sorted By : Signal
Calib. Data Modified : 4/9/2021 12:39:36 PM
Multiplier: : 1.0000
Dilution: : 1.0000
Do not use Multiplier & Dilution Factor with ISTDs

Signal 1: MWD1 A, Sig=220,4 Ref=off

RetTime [min]	Type	Area [mAU*s]	Amt/Area	Amount [ng/ul]	Grp	Name
2.113		-	-	-		CBDVA 220
2.331		-	-	-		CBDV 220
2.903		-	-	-		CBDA 220
3.008		-	-	-		CBGA 220
3.237	BB	11.82967	1.05660e-1	1.24992		CBG 220
3.411		-	-	-		CBD 220
3.534		-	-	-		THCV 220
4.431		-	-	-		THCVA 220
4.751	BB	141.63168	5.35195e-2	7.58006		CBN 220
5.555		-	-	-		CBDP 220
5.805	BB	260.33279	1.05562e-1	27.48118		D9-THC 220
5.940		-	-	-		D8-THC 220
6.473	BV	60.50683	1.07772e-1	6.52092		CBL 220
6.631	VB	622.99579	1.10561e-1	68.87917		CBC 220
6.887	BB	15.51215	2.77623e-2	4.30653e-1		THCA 220
7.435		-	-	-		CBCA 220
7.534		-	-	-		CBLA 220
8.143		-	-	-		THCP 220

Totals : 112.14190

Signal 2: MWD1 B, Sig=270,8 Ref=off

RetTime [min]	Type	Area [mAU*s]	Amt/Area	Amount [ng/ul]	Grp	Name
2.114		-	-	-		CBDVA 270
2.332		-	-	-		CBDV 270
2.904		-	-	-		CBDA 270
3.009		-	-	-		CBGA 270
3.214		-	-	-		CBG 270
3.412		-	-	-		CBD 270
3.535		-	-	-		THCV 270
4.432		-	-	-		THCVA 270
4.750	BB	54.24130	2.01037e-1	10.90451		CBN 270
5.556		-	-	-		CBDP 270
5.805	BB	9.45166	1.83260	17.32111		D9-THC 270
5.941		-	-	-		D8-THC 270
6.473	BV	48.40437	0.00000	0.00000		CBL 270
6.683	VB	140.93503	3.13091e-1	44.12553		CBC 270
6.924		-	-	-		THCA 270
7.436		-	-	-		CBCA 270
7.535		-	-	-		CBLA 270
8.144		-	-	-		THCP 270

Totals : 72.35115

Signal 3: MWD1 C, Sig=205,4 Ref=off

4 Warnings or Errors :

- Warning : Calibration warnings (see calibration table listing)
- Warning : Calibrated compound(s) not found
- Warning : Elution order of calibrated compounds may have changed
- Warning : Invalid calibration curve, (CBL 270)

=====
Compound-related custom fields:

*** End of Report ***