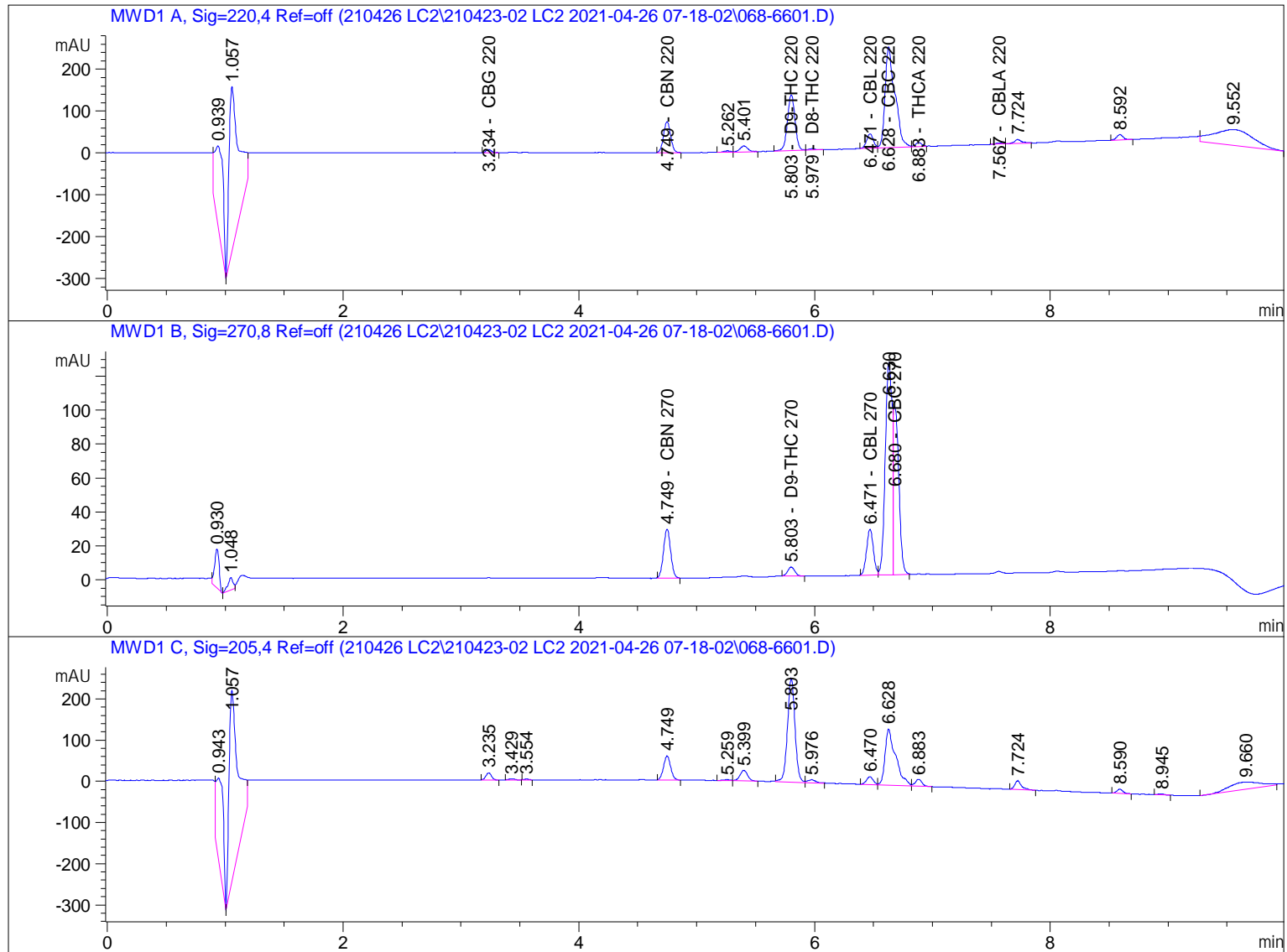


=====
Acq. Operator : DB, AF, PV, GR Seq. Line : 66
Acq. Instrument : Instrument 1 Location : Vial 68
Injection Date : 4/26/2021 7:41:20 PM Inj : 1
Inj Volume : 1.5 µl
Acq. Method : C:\CHEM32\1\DATA\210426 LC2\210423-02 LC2 2021-04-26 07-18-02\
01CANNABINOIDS.M
Last changed : 12/3/2019 12:15:28 PM
Analysis Method : C:\CHEM32\1\METHODS\210409 MWD ICAL.M
Last changed : 4/9/2021 12:44:27 PM by DB, AF, PV, GR



=====
External Standard Report
=====

Sorted By : Signal
Calib. Data Modified : 4/9/2021 12:39:36 PM
Multiplier: : 1.0000
Dilution: : 1.0000
Do not use Multiplier & Dilution Factor with ISTDs

Signal 1: MWD1 A, Sig=220,4 Ref=off

RetTime [min]	Type	Area [mAU*s]	Amt/Area	Amount [ng/ul]	Grp	Name
2.113		-	-	-		CBDVA 220
2.331		-	-	-		CBDV 220
2.903		-	-	-		CBDA 220
3.008		-	-	-		CBGA 220
3.234	BB	27.15205	1.08754e-1	2.95289		CBG 220
3.411		-	-	-		CBD 220
3.534		-	-	-		THCV 220
4.431		-	-	-		THCVA 220
4.749	BB	314.01614	6.06629e-2	19.04913		CBN 220
5.555		-	-	-		CBDP 220
5.803	BB	596.22986	1.10030e-1	65.60313		D9-THC 220
5.979	BB	13.79155	1.46126e-1	2.01531		D8-THC 220
6.471	BV	140.11392	1.03618e-1	14.51828		CBL 220
6.628	VV	1394.38318	1.10543e-1	154.13913		CBC 220
6.883	VV	38.92153	7.54808e-2	2.93783		THCA 220
7.435		-	-	-		CBCA 220
7.567	BV	9.37687	5.82122e-1	5.45848		CBLA 220
8.143		-	-	-		THCP 220

Totals : 266.67417

Signal 2: MWD1 B, Sig=270,8 Ref=off

RetTime [min]	Type	Area [mAU*s]	Amt/Area	Amount [ng/ul]	Grp	Name
2.114		-	-	-		CBDVA 270
2.332		-	-	-		CBDV 270
2.904		-	-	-		CBDA 270
3.009		-	-	-		CBGA 270
3.214		-	-	-		CBG 270
3.412		-	-	-		CBD 270
3.535		-	-	-		THCV 270
4.432		-	-	-		THCVA 270
4.749	BB	123.40530	1.76096e-1	21.73119		CBN 270
5.556		-	-	-		CBDP 270
5.803	BB	22.61921	2.37649	53.75438		D9-THC 270
5.941		-	-	-		D8-THC 270
6.471	BV	109.88532	0.00000	0.00000		CBL 270
6.680	VB	310.96509	3.12718e-1	97.24449		CBC 270
6.924		-	-	-		THCA 270
7.436		-	-	-		CBCA 270
7.535		-	-	-		CBLA 270
8.144		-	-	-		THCP 270

Totals : 172.73007

Signal 3: MWD1 C, Sig=205,4 Ref=off

4 Warnings or Errors :

- Warning : Calibration warnings (see calibration table listing)
- Warning : Calibrated compound(s) not found
- Warning : Elution order of calibrated compounds may have changed
- Warning : Invalid calibration curve, (CBL 270)

=====
Compound-related custom fields:

*** End of Report ***