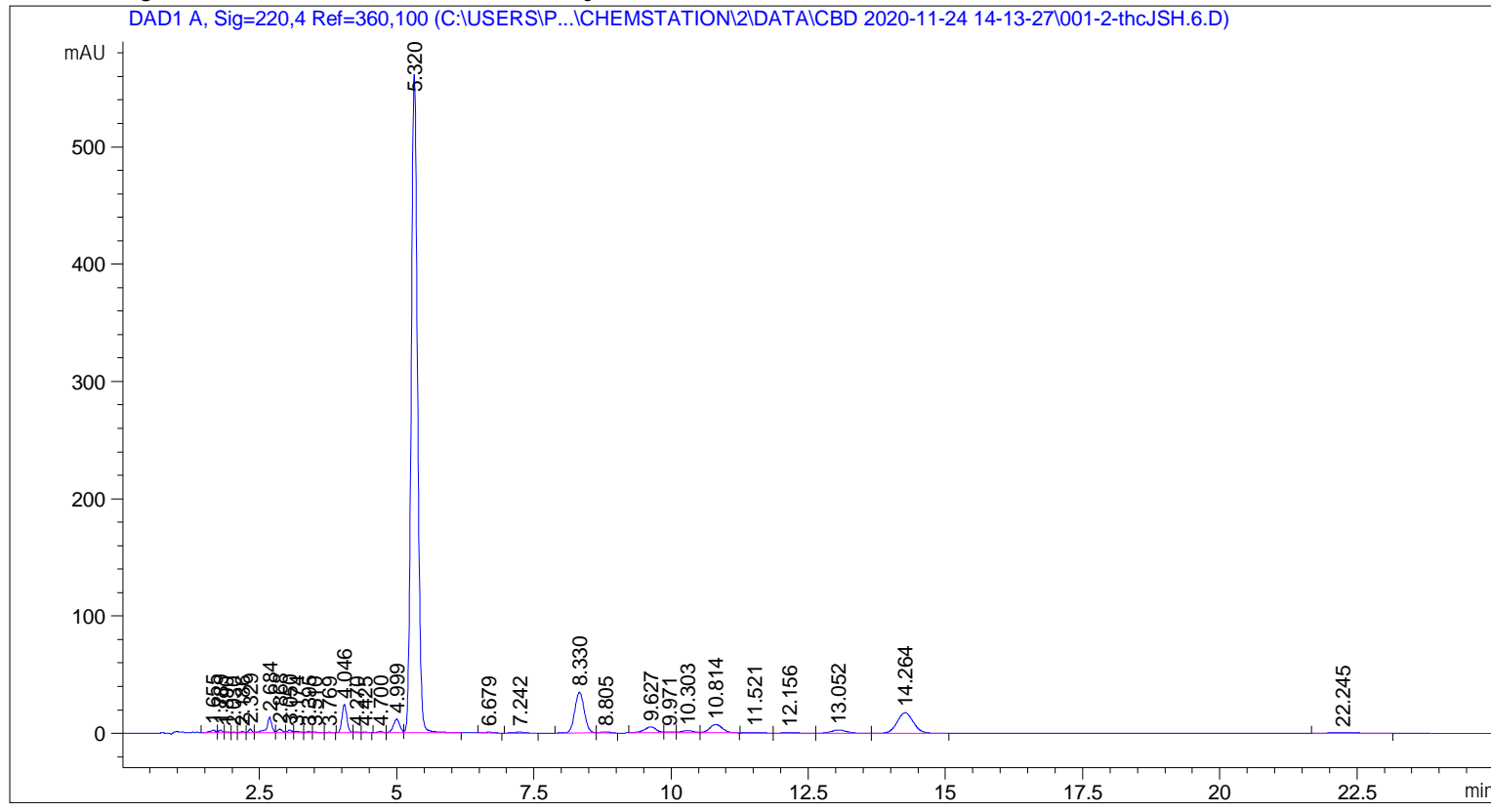


```

=====
Acq. Operator   : SYSTEM                               Seq. Line :    1
Sample Operator : SYSTEM
Acq. Instrument : 1100 LC                             Location  :    2
Injection Date  : 11/24/2020 2:15:57 PM              Inj       :    1
                                                    Inj Volume: 5.000 µl

Acq. Method     : C:\Users\Public\Documents\ChemStation\2\Data\CBD 2020-11-24 14-13-27\CBD.M
Last changed    : 5/18/2020 9:15:46 AM by SYSTEM
Analysis Method : C:\Users\Public\Documents\ChemStation\2\Methods\CBD.M
Last changed    : 12/3/2020 7:22:58 AM by SYSTEM
  
```



=====
 Area Percent Report
 =====

```

Sorted By      :      Signal
Multiplier     :      1.0000
Dilution      :      1.0000
Use Multiplier & Dilution Factor with ISTDs
  
```

Signal 1: DAD1 A, Sig=220, 4 Ref=360, 100

Peak #	RetTime [min]	Type	Width [min]	Area [mAU*s]	Height [mAU]	Area %
1	1.655	BH	0.1058	14.74598	2.00550	0.2451
2	1.789	HH	0.0663	10.05663	2.33204	0.1672
3	1.890	HH	0.0825	3.12138	6.22562e-1	0.0519
4	2.030	BH	0.0573	1.63664	4.61913e-1	0.0272
5	2.186	HH	0.0660	4.36330	1.01896	0.0725
6	2.329	BH	0.0667	12.04984	3.00960	0.2003
7	2.684	HH	0.0937	82.48546	13.05472	1.3710
8	2.868	HH	0.0941	17.80683	2.96523	0.2960

Sample Name: thcJSH.6

Peak #	RetTime [min]	Type	Width [min]	Area [mAU*s]	Height [mAU]	Area %
9	3.050	HH	0.0850	11.61971	2.08435	0.1931
10	3.174	HH	0.0990	7.91904	1.11297	0.1316
11	3.395	HH	0.0897	5.10809	8.54981e-1	0.0849
12	3.510	HH	0.0808	2.71268	5.20914e-1	0.0451
13	3.769	BH	0.0805	2.12794	4.10397e-1	0.0354
14	4.046	BH	0.0962	148.73299	24.03304	2.4721
15	4.270	HH	0.0862	2.44498	4.30720e-1	0.0406
16	4.425	HB	0.0901	3.01025	5.30984e-1	0.0500
17	4.700	BH	0.1042	6.67024	1.02124	0.1109
18	4.999	BH	0.1258	92.06108	11.45249	1.5302
19	5.320	HB	0.1254	4486.34570	560.40912	74.5683
20	6.679	HB	0.1683	6.48047	6.08337e-1	0.1077
21	7.242	BB	0.2092	10.80017	7.62707e-1	0.1795
22	8.330	BH	0.1861	409.44235	34.59155	6.8054
23	8.805	HB	0.1812	7.92567	7.15684e-1	0.1317
24	9.627	BH	0.2283	76.36878	5.05255	1.2693
25	9.971	HH	0.1700	7.75612	6.75083e-1	0.1289
26	10.303	HH	0.2329	25.10379	1.69433	0.4173
27	10.814	HB	0.2485	112.90074	7.13838	1.8765
28	11.521	HB	0.2406	9.17672	5.79998e-1	0.1525
29	12.156	BB	0.2755	6.51989	3.52980e-1	0.1084
30	13.052	HB	0.2952	50.18350	2.67156	0.8341
31	14.264	HB	0.3225	355.00003	17.36702	5.9005
32	22.245	HB	0.4635	23.74959	7.30200e-1	0.3947

Totals : 6016.42658 701.27210

=====
*** End of Report ***