



Certificate of Analysis

CANNABUSINESS LABORATORIES, LLC

Customer:

Mouser Properties
865 Whitfield Lane
Taylorsville, KY 40071

Received Date **11/8/2022**
COA Released **11/11/2022**

Comments

Sample ID **221108011**
Order Number **CB221108008**
Sample Name **CBGa 11/8 pentone**

External Sample ID

Batch Number
Product Type **Concentrate**
Sample Type **Concentrate**

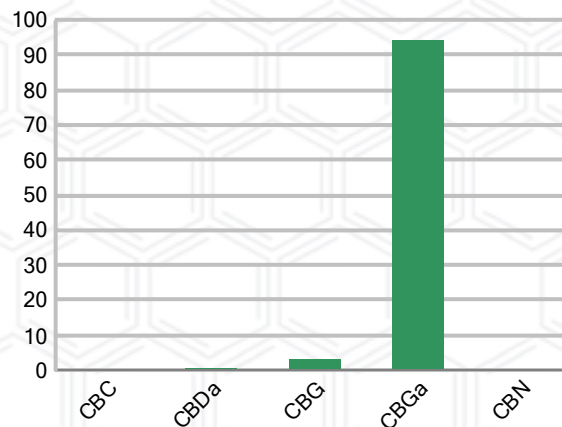
CANNABINOID PROFILE

Analyte	LOQ (%)	% Weight	mg/g
CBC	0.01	0.015	0.152
CBD	0.01	ND	ND
CBDa	0.01	0.523	5.231
CBDV	0.01	ND	ND
CBG	0.01	3.086	30.86
CBGa	0.01	94.05	940.5
CBN	0.01	0.037	0.373
d8-THC	0.01	ND	ND
d9-THC	0.01	ND	ND
THCa	0.01	ND	ND
Total Cannabinoids		97.71	977.1
Total Potential THC		N/A	N/A
Total Potential CBD		0.459	4.588
Total Potential CBG		85.66	856.6
Ratio of Total Potential CBD to Total Potential THC		N/A	
Ratio of Total Potential CBG to Total Potential THC		N/A	

SAMPLE IMAGE



CANNABINOIDS % Weight



*Total Cannabinoids refers to the sum of all cannabinoids detected.

*Total Potential CBD = (0.877 x CBDa) + CBD. *Total Potential THC = (0.877 x THCa) + THC. *Total Potential CBG = (0.877 x CBGa) + CBG.

*Total Potential THC/CBD are calculated to take into account the loss of an acid group during decarboxylation.



J. Hobgood
Laboratory Manager

SIGNATURE

Jamie Hobgood

LABORATORY MANAGER

11/11/2022 8:37 AM

DATE

This product has been tested by CannaBusiness Laboratories using validated testing methodologies and a quality system. Values reported relate only to the product tested. CannaBusiness Laboratories makes no claims as to the efficacy, safety, or other risks associated with any detected or non-detected levels of any compounds reported herein. This Certificate shall not be reproduced except in full, without the written permission of CannaBusiness Laboratories. Photo is of sample received by the lab and may vary from final packaging. The results apply to the sample as received.

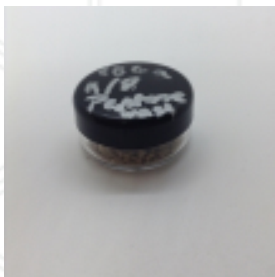


Certificate of Analysis

CANNABUSINESS LABORATORIES, LLC

Customer

Mouser Properties
865 Whitfield Lane
Taylorsville, KY 40071



Overall Batch Results

Pesticide	Moisture Content
Potency	Water Activity
Mycotoxins	Heavy Metals
Microbial Screen	Residual Solvents
Terpenoids	

Sample Name: CBGa 11/8 pentone

Sample ID: 221108011

Order Number: CB221108008

Product Type: Concentrate

Sample Type: Concentrate

Received Date: 11/08/2022

Batch Number:

COA released: 11/11/2022 8:37 AM

Potency (mg/g)

Date Tested: 11/10/2022

Method: CB-SOP-028

Instrument:

0.000 % Total THC	0.459 % Total CBD	97.71 % Total Cannabinoids	977.1 mg/g Total Cannabinoids
-----------------------------	-----------------------------	--------------------------------------	---

Analyte	Result	Units	LOQ	Result	Units
CBC (Cannabichromene)	0.015	%	0.010	0.152	mg/g
CBD (Cannabidiol)	ND	%	0.010	ND	mg/g
CBDa (Cannabidiolic Acid)	0.523	%	0.010	5.231	mg/g
CBDV (Cannabidivarin)	ND	%	0.010	ND	mg/g
CBG (Cannabigerol)	3.086	%	0.010	30.86	mg/g
CBGa (Cannabigerolic Acid)	94.05	%	0.010	940.5	mg/g
CBN (Cannabinol)	0.037	%	0.010	0.373	mg/g
D8-THC (D8-Tetrahydrocannabinol)	ND	%	0.010	ND	mg/g
D9-THC (D9-Tetrahydrocannabinol)	ND	%	0.010	ND	mg/g
THCa (Tetrahydrocannabinolic Acid)	ND	%	0.010	ND	mg/g



J. Hobgood
Laboratory Manager

Jamie Hobgood

11/11/2022 8:37 AM

SIGNATURE

DATE

NT = Not tested, ND = Not detected; LOQ = Limit of Quantitation; <LOQ = Detected; >ULOL = Above upper limit of linearity; CFU/g = Colony forming units per 1 gram; TNTC = Too numerous to count

This product has been tested by CannaBusiness Laboratories using validated testing methodologies and a quality system. Values reported relate only to the product tested. CannaBusiness Laboratories makes no claims as to the efficacy, safety, or other risks associated with any detected or non-detected levels of any compounds reported herein. This Certificate shall not be reproduced except in full, without the written permission of CannaBusiness Laboratories. Photo is of sample received by the lab and may vary from final packaging. The results apply to the sample as received.