



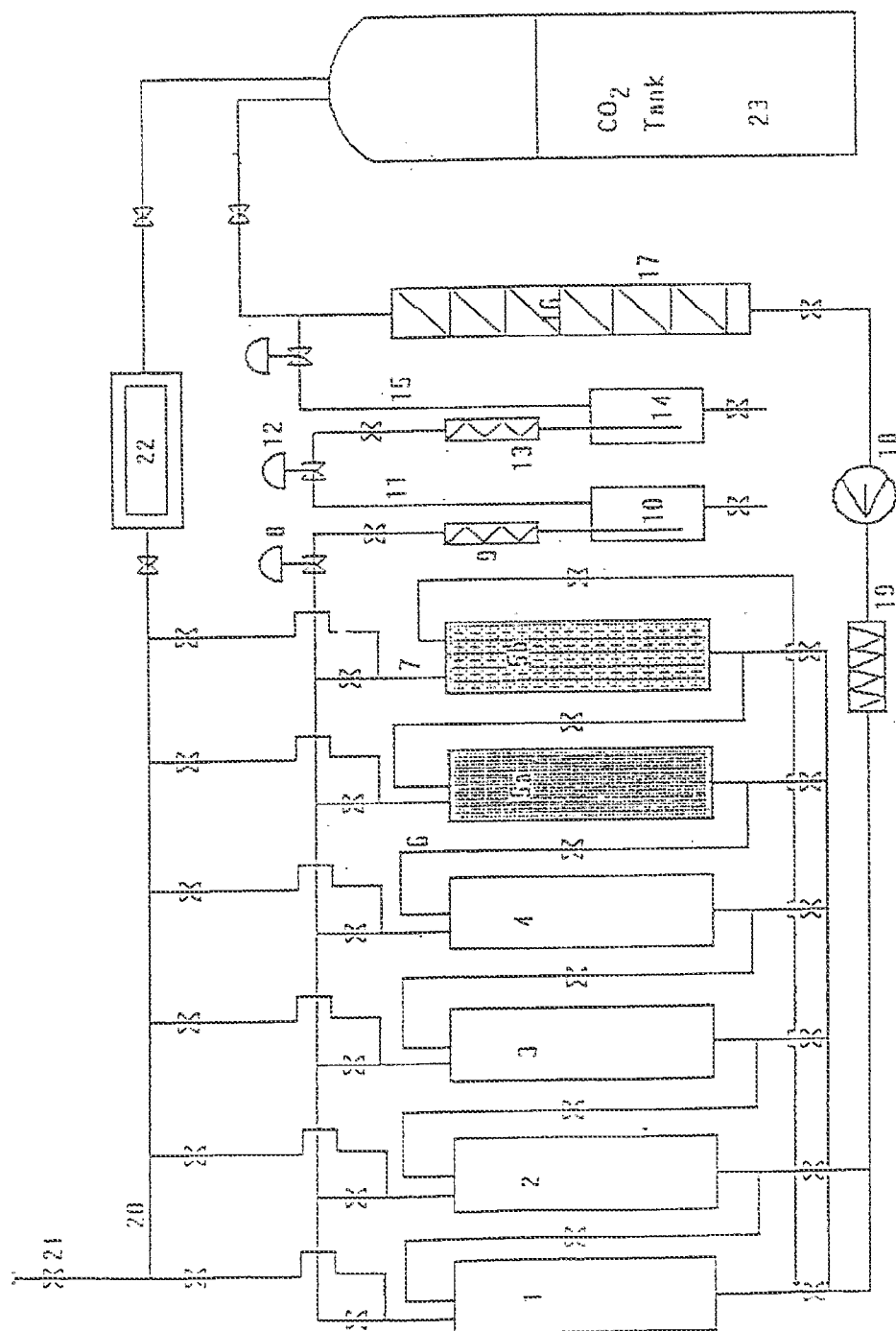
US 20140248379A1

(19) **United States**(12) **Patent Application Publication**
Mueller(10) **Pub. No.: US 2014/0248379 A1**(43) **Pub. Date: Sep. 4, 2014**(54) **PROCESS FOR PRODUCING AN EXTRACT
CONTAINING TETRAHYDROCANNABINOL
AND CANNABIDIOL FROM CANNABIS
PLANT MATERIAL, AND CANNABIS
EXTRACTS**(71) Applicant: **Delta-9-Pharma GmbH**, Neumarkt
(DE)(72) Inventor: **Adam Mueller**, Coburg (DE)(73) Assignee: **Delta-9-Pharma GmbH**, Neumarkt
(DE)(21) Appl. No.: **14/276,165**(22) Filed: **May 13, 2014****Related U.S. Application Data**(63) Continuation of application No. 10/399,362, filed on
Oct. 16, 2003, filed as application No. PCT/EP01/
11967 on Oct. 16, 2001.(30) **Foreign Application Priority Data**

Oct. 17, 2000 (DE) 10051427.8

Publication Classification(51) **Int. Cl.**
A61K 36/185 (2006.01)(52) **U.S. Cl.**
CPC **A61K 36/185** (2013.01)
USPC **424/725**(57) **ABSTRACT**

The invention relates to a method for producing an extract from *cannabis* plant matter, containing tetrahydrocannabinol, cannabidiol and optionally the carboxylic acids thereof. According to said method, the dried plant matter is ground and subjected to a CO₂ extraction and the primary extract obtained is separated. The invention method permits Δ⁸ or Δ⁹ tetrahydrocannabinol to be selectively obtained both from industrial hemp and from drug-producing hemp, optionally after dissolving the primary extract in ethanol, separating undesirable waxes and removing the solvent under reduced pressure.



100

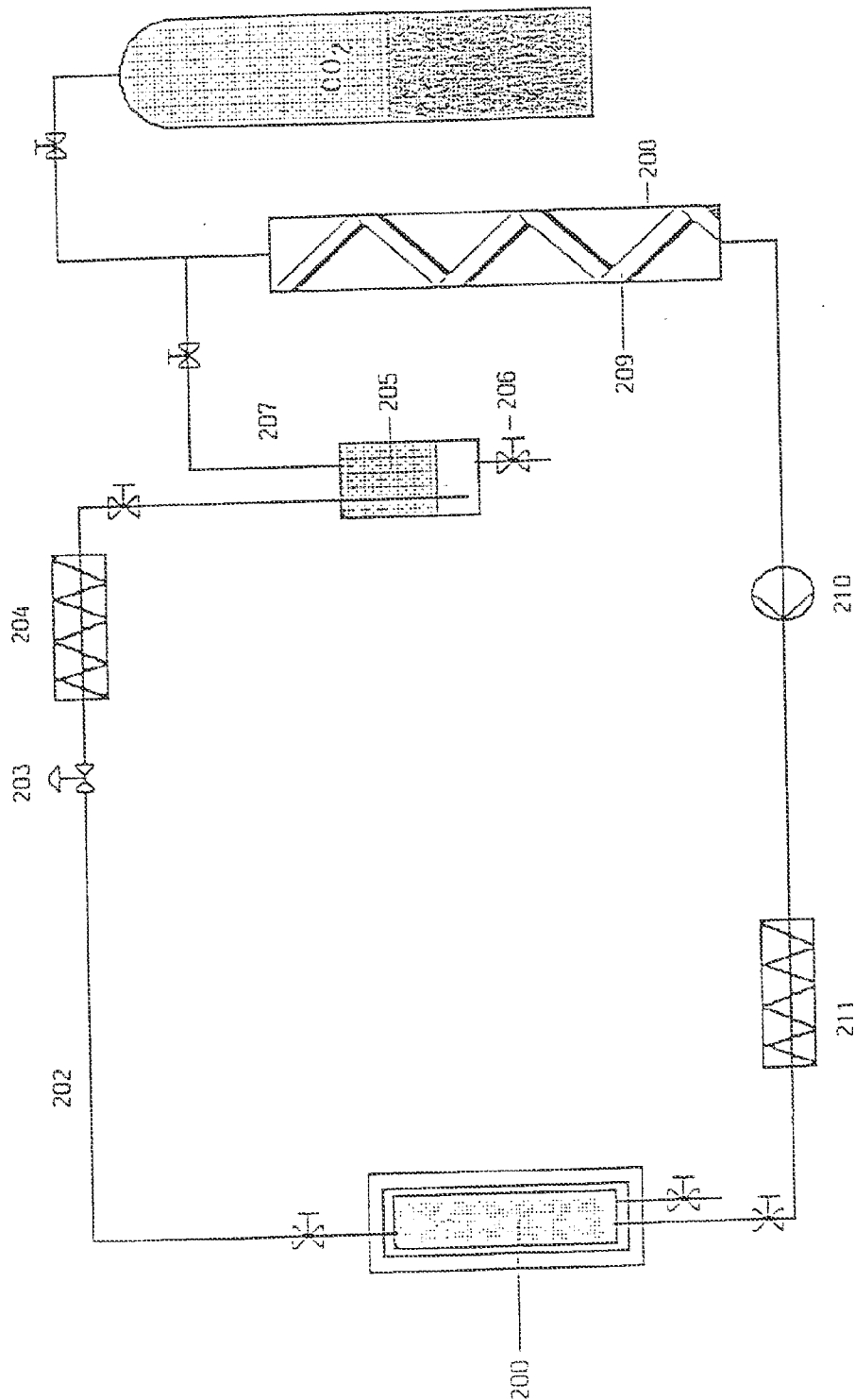
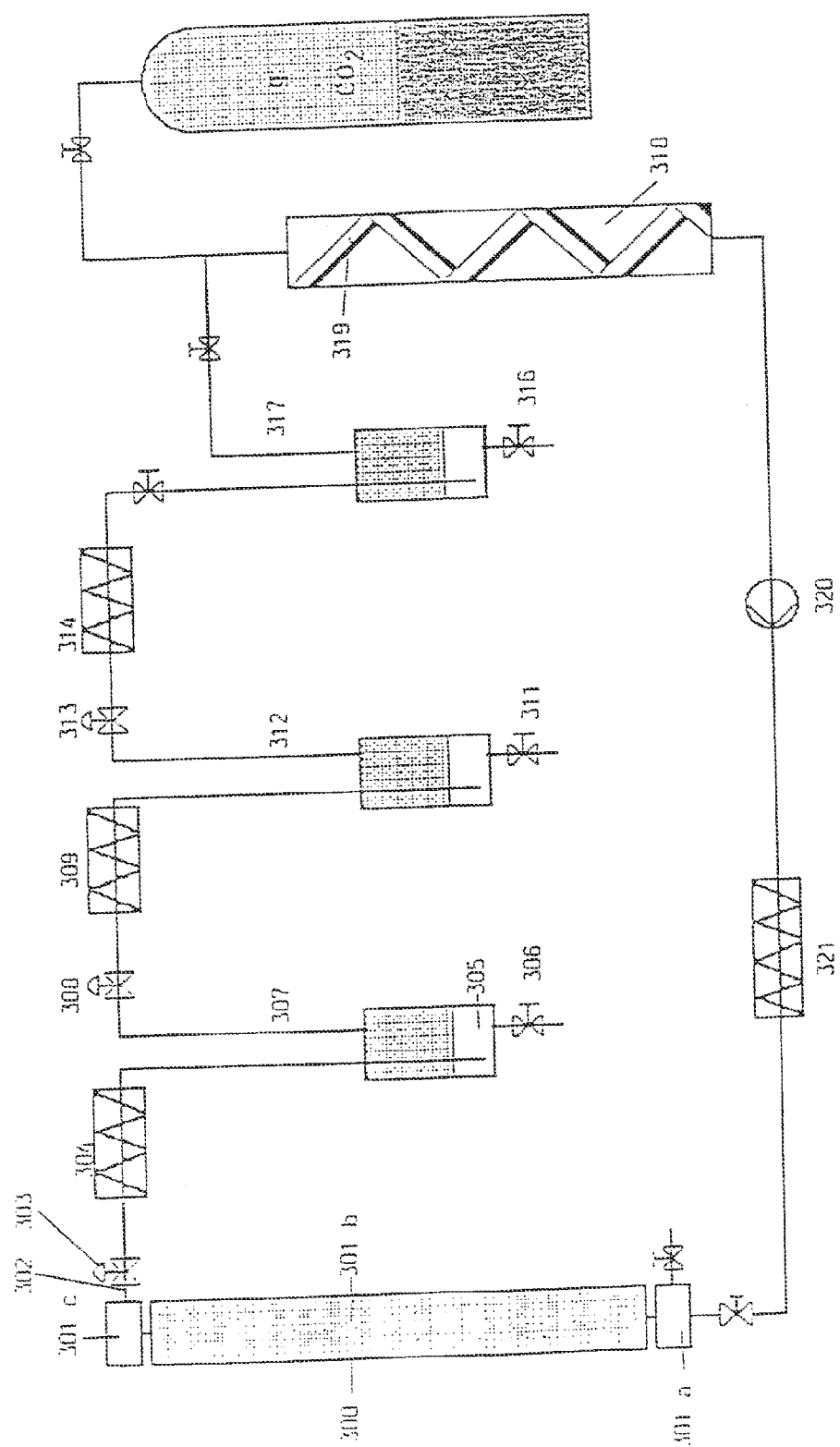


Fig. 2



3
Fib³

**PROCESS FOR PRODUCING AN EXTRACT
CONTAINING TETRAHYDROCANNABINOL
AND CANNABIDIOL FROM CANNABIS
PLANT MATERIAL, AND CANNABIS
EXTRACTS**

BACKGROUND OF THE INVENTION

Field of the Invention

[0001] The present invention relates to a process for producing an extract containing tetra-hydrocannabinol, cannabidiol, and optionally the carboxylic acids thereof from *cannabis* plant material in accordance with the preamble of claim 1, a primary extract from *cannabis* plant material in accordance with claim 8, and a process for producing tetrahydrocannabinol in accordance with claim 13 and a process for producing cannabidiol in accordance with claim 14.

[0002] *Cannabis* (hemp), together with the genus *Humulus* (hops), belongs to the family of Cannabinaceae, with hops, for instance, not containing any cannabinoids. For the botanical and chemotaxonomical differentiation of the genus *Cannabis* there are two different concepts. One differentiates between three species, *Cannabis sativa* Linnaeus, *Cannabis indica* LAM., and *Cannabis ruderalis*, while a different theory only sees the existence of the one collective species *Cannabis sativa* L. made up of the subspecies *Cannabis sativa* ssp. *sativa* and ssp. *indica*. Moreover the *cannabis* plant is differentiated into a drug type and a fiber type, with differentiation being performed on the basis of the quantity ratio of the main cannabinoids, cannabidiol (CBD) and Δ^9 -tetrahydrocannabinol (Δ^9 -THC). Fiber hemp, whose cultivation is permitted for fiber production, must not exceed a Δ^9 -THC content of 0.3% relative to the dry plant mass, while the drug type may exhibit a Δ^9 -THC content of approx. 5% - 15% relative to the dry plant mass.

[0003] The ratio of Δ^9 -THC to CBD in fiber hemp is mostly less than 1.5. The varieties rich in Δ^9 -THC may reach a ratio of 2:1 to 7:1. *Cannabis sativa* L. occurs worldwide in all warm and moderate zones with the exception of the humid tropical rain forests. It is an annual to biennial, anemogamous herb which may attain a height of up to 8 m. The dioecous, rarely monocious inflorescences contain the active cannabinoids in the resin which is mainly secreted by the numerous glandular bracts in the leaf axils. As a general rule, all the plant parts of *Cannabis sativa* L. with the exception of the seeds may contain cannabinoids. The highest cannabinoid concentrations are found in the floral bracts and fruit stalks. The leaves have a low content of cannabinoids as a function of leaf age, while the stalk and particularly the root exhibit clearly lower cannabinoid contents.

[0004] In Germany, the known *cannabis* preparations having a hallucinogenic effect, marijuana and hashish, are subject to the regulations of the Narcotics Act as non-trafficable narcotics like opium, morphine, heroin, cocaine and LSD.

[0005] *Cannabis sativa* L. contains more than 420 different components, with 61 compounds of these belonging to the class of cannabinoids. These are lipophilic, nitrogen-free, mostly phenolic compounds. The neutral cannabinoids are biogenetically derived from a monoterpene and a phenol, the acidic cannabinoids from a monoterpene and a phenolic acid, and present a C_{21} parent substance. In literature, two different numbering systems for cannabinoids are found. The older numbering system is based on the monoterpene skeleton,

whereas the more recent IUPAC designation which is exclusively employed in the present application, relates to the dibenzopyrane skeleton.

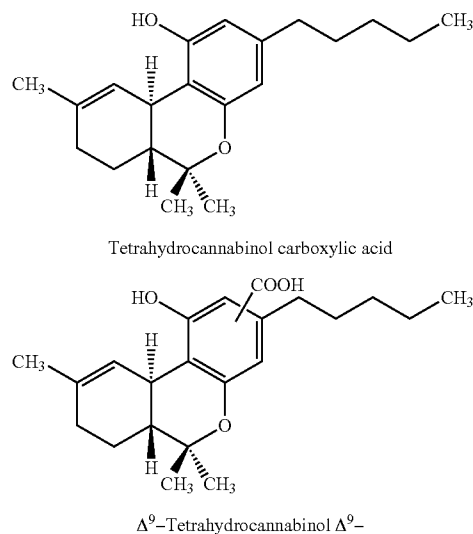
[0006] Among the most important cannabinoids there are:

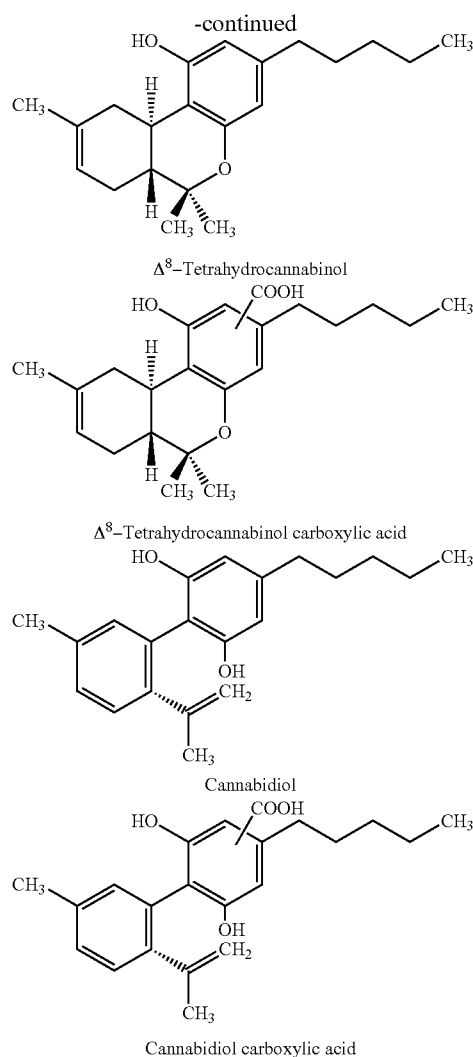
Δ^9 -tetrahydrocannabinol	Δ^9 -THC
Δ^8 -tetrahydrocannabinol	Δ^8 -THC
cannabichromene	CBC
cannabidiol	CBD
cannabigerol	CBG
cannabinidiol	CBND
cannabinol	CBN

[0007] Besides the above mentioned cannabinoids, the associated carboxylic acids thereof are moreover found in the raw drug as well as in the plant products. As a general rule, the carboxylic acids have the function of a biosynthetic precursor. Thus, for instance, the tetrahydrocannabinols and Δ^5 -THC and CBD are generated in vivo from the THC carboxylic acids by decarboxylation from the associated cannabidiol carboxylic acids.

[0008] Δ^8 -THC may, for instance, also form upon cyclization of CBD. Another possibility is that Δ^8 -THC may be generated under certain conditions, for instance acidity, by double bond isomerism from Δ^9 -THC or its carboxylic acid, respectively,

[0009] In the following, the chemical structures of some cannabinoid active principles and the nomenclature of the two active principles at tetrahydrocannabinol are specified, which bear the IUPAC names (6aR-trans)-6a,7,8,10-tetrahydro-6,6,9-trimethyl-3-pentyl-6H-dibenzo[b,d]pyran-1-ol or Δ^9 -THC and (6aR-trans)-6a,7,10,10a-tetrahydro-6,6,9-trimethyl-3-pentyl-6H-dibenzo[b,d]pyran-1-ol or Δ^8 -THC, Δ^9 -THC is also known under the designation of Dronabinol.





[0010] In the framework of the present invention, the expression "tetrahydrocannabinol" or "THC" - where not otherwise specified - is to encompass any isomers, in particular double bond isomers.

[0011] In any cultures and for a long time, cannabis has been a traditional drug and a remedy. Up into the 20th century, cannabis was employed for the most variegated ailments - from) asthma to migraine. Restrictive legislation against cannabis on the part of the USA, however, brought about its complete disappearance from the pharmacopoeiae and from physicians' repertoires of treatment.

[0012] In the meantime, many of the therapeutical effects handed down are coming to be confirmed in clinical research. At present, the pharmacological use of cannabis active principles is of importance essentially in the following indications:

[0013] the appetite stimulating effect, in particular in the case of AIDS-related afflictions accompanied by cachexia and wasting syndrome,

[0014] the antiemetic action for inhibiting nausea and vomiting, particularly in connection with chemotherapy under administration of cytostatic agents,

[0015] the reduction of muscle cramps and spasms in multiple sclerosis and tray lesions of the cord with paraplegia,

[0016] pain and migraine treatment—in chronic pain therapy also complementarily with opioid treatment,

[0017] lowering intra-ocular pressure glaucoma.

[0018] mood improvement,

and in particular cannabidiol as an anti-epileptic.

[0019] Owing to the interesting therapeutic range of the cannabinoids, a number of experiments were carried out to enrich, isolate and/or synthesize the cannabinoids exclusively from drug hemp,

[0020] Thus, e.g., DE 41 00 441 A1 discloses a process for producing 6,12-dihydro-6-hydroxy-cannabidiol and its use for producing trans-Δ⁹-tetrahydrocannabinol. In particular DE 41 00 441 A1 describes the manufacture of 6,12-dihydro-6-hydroxy-cannabidiol, which is obtained by reacting olivetol and cis-p-menth-2-ene-1,8-diol and its further reaction to trans-2-tetrahydrocannabinol by using suitable catalysts.

[0021] A drawback of this prior-art process, however, is the relatively high expenditure and the ultimately costly product obtained.

[0022] Apart from this, solvent extraction, e.g. with the aid of ethanol, and steam distillation of cannabis constituents is known; in particular a hashish oil (cannabis resin extract) also referred to as Oil, Red Oil or Indian. Oil is known, which is produced with the aid of solvent extraction or distillation from cannabis herb or cannabis resin and which is a dark brown, viscous and sticky oil. The oil thus obtained is subsequently mostly diluted with edible oil for improved handling and contains up to 65% of the hallucinogenic agent Δ⁹-THC (Kielber/Kovan *Auswirkungen des Cannabiskonsums: Eine apertise zu pharmakologischen and psychosozialen Konsequenzen*, Stuttgart: Wiss. Verl.-Ges. 1998),

[0023] Dronabinol, Δ⁴-THC, has meanwhile been approved in the USA in accordance with USP [United States Pharmacopeia] 24, pp. 613, 14 as a medicament—also in capsule form—. In accordance with this monography, dronabinol contains no less than 95% of Δ⁹-THC and no more than 2% of Δ⁸-THC.

[0024] As of Feb. 1, 1998, dronabinol may be prescribed as an anaesth in Germany.

[0025] WO 00/25127 A1 moreover relates to the extraction of hemp for the isolation of tetrahydrocannabinol from the natural cannabis plant. What is described in particular is an extraction process with an apolar organic solvent, followed by fractional distillation under reduced pressure in order to produce distillates having high tetrahydrocannabinol contents. As suitable apolar solvents, lower alkanes such as, e.g., hexane, heptane or isooctane are named in WO 00/25127 A1.

[0026] In accordance with Examples 1, 2, 3, 4 and 7 of reference WO 00/25127 A1 exclusively drug hemp having tetrahydrocannabinol dry concentrations of 2.20%-7.82% is extracted with hexane.

[0027] Such primary hexane extracts in accordance with WO 002517 A1 contain 28,76% (Example up to a maximum of 41,2% (Example 3) of tetrahydrocannabinol,

[0028] Apart from tetrahydrocannabinol, WO 00/25127 A1 does not disclose any further constituents of the hexane primary extract,

[0029] Starting out from the above explained prior art and from the new legal situation in the Federal Republic of Germany, it accordingly was the object of the present invention to provide Δ⁹-tetrahydrocannabinol, Δ⁸-tetrahydrocannabinol

and cannabidiol in pure form and as an extract in the form of preparations for medical applications, wherein the active principles should preferably be obtained from hemp varieties having low cannabinoid contents for the reason of better availability.

[0030] In terms of process technology, this object is accomplished through the characterizing features of claims 1, 13 and 14. With regard to an extract having the main constituents Δ^9 -THC, Δ^8 -THC and CBD, the above object is accomplished through the characterizing features of claim 8.

[0031] In accordance with the invention, a primary extract containing tetrahydrocannabinol, cannabidiol, and optionally the carboxylic acids thereof, is obtained from *cannabis* plant material in that the dried plant material is comminuted, the plant material is extracted with the aid of CO₂ under supercritical pressure and temperature conditions at a temperature in the range of approx. 31° C. to 80° C. and at a pressure in the range of approx. 75 bar to 500 bar, or in the subcritical range at a temperature of approx. 20° C. to 30° C. and a supercritical pressure of approx. 100 bar to 350 bar; or extracted under subcritical pressure and temperature conditions; and the obtained primary extract is separated under subcritical conditions, or under conditions that are subcritical in terms of pressure and supercritical in terms of temperature.

[0032] In terms of cannabinoids, the primary extract of the invention contains high proportions of cannabidiol carboxylic acid (CBDS), cannabidiol (CBD), and Δ^9 -tetra-hydrocannabinol carboxylic acid (Δ^9 -THCS), and Δ^9 -THC (when drug hemp is used),

[0033] The production of CO₂ extracts is known in principle. Thus, e.g., DE 198 00 330 A1 discloses the production of a pharmaceutically active extract from *Tanacetum parthenium* through CO₂ extraction with the aid of an extraction plant as used in the present invention.

[0034] As a particularly preferred *cannabis* plant material, for reasons of procurement on an industrial scale, one from *Cannabis sativa* in particular hemp of the fiber type, i.e. so-called industrial hemp, is used.

[0035] Owing to currently valid legislation, industrial hemp species of the fiber type may contain 0.3% of ATC at maximum in the Federal Republic of Germany; for Switzerland an upper limit of 0.5% Δ^9 -THC applies, based on the dry plant mass in either case.

[0036] The like industrial hemp varieties may be cultivated both in the Federal Republic of Germany and in Switzerland, for example, while requiring neither any complicated cultivating permission nor any complicated safety installations during storage.

[0037] It is thus advantageous if *cannabis* plant material of the fiber type may be used for the production of primary extracts containing Δ^9 -THC and CBD, for it is possible to employ such starting material having a low Δ^9 -THC content for the inventive process without any further operating and handling permissions as are required in the case of drug hemp types.

[0038] Varieties entering into consideration here are in particular the French varieties Fedora 19, Felina 45 and Future 77, the Hungarian varieties Kompolti and Uniko- and the Finnish variety Rhola 314, for the average for all varieties lies clearly below the specified limits (Mediavilla, V. and Breisen, R. 1996: Mitt Gess Pflanzenbauwiss, 9; 243-244).

[0039] When it is possible to employ drug hemp types, however, the Δ^9 -THC content in the primary extract is higher than in one produced of fiber hemp.

[0040] The addition to the CO₂ of an entraining agent selected from the group consisting of: propane, butane, ethanol and water, has the advantage that hereby the yields for Δ^9 -THC and CBD may be increased without involving the drawbacks as with an extract produced, with ethanol or ethanol/water or methanol/chloroform or with other chlorinated hydrocarbons.

[0041] Typically the, entraining agent concentrations are the range of 1 -10% based on the employed quantity of CO₂.

[0042] The extraction process of the invention preferably operates in the supercritical range at a temperature of approx. 31° C. to 80° C. and a pressure of approx. 75 bar to 500 bar, in particular at a temperature of approx. 45° C. to 65° C. and a pressure of approx. 100 bar to 350 bar, preferably at a temperature of approx. 60° C. and a pressure of approx. 250 bar.

[0043] In the subcritical range, in contrast, a temperature of approx. 20° C. to 30° C. and a supercritical pressure of approx. 100 bar to 350 bar are used.

[0044] The measure of arranging a layer of adsorbent on the material to be extracted downstream relative to the CO₂ flow has the advantage that monoterpenes and sesquiterpenes as well as alkaloids, flavonoids and chlorophylls may be separated out, so that the inventive primary extracts are even the more superior to the ethanol extracts known in the prior art and to the extracts prepared with the aid of chlorinated hydrocarbons, for the latter in any case are fairly high in mono- and sesquiterpenes as well as chlorophylls, flavonoids and alkaloids.

[0045] As an alternative the CO₂ laden with THC and CBD as well as with proportions of reduced mono- and sesquiterpenes, flavonoids, chlorophylls and alkaloids may also be passed over adsorbers charged adsorbents or separators (FIG. 1).

[0046] Preferred adsorbents are those selected from the group comprised of: silica gel, diatomaceous earth, bentonites, bleaching earth, activated carbons, in particular magnesium oxide and alumina, as well as mixtures thereof.

[0047] In order to increase the extraction yield, it is preferred to repeat extraction at least once, with extraction preferably being repeated with diatomaceous earth and/or some other adsorbent.

[0048] The inventive primary extracts from *Cannabis* plant material containing Δ^9 -THC and cannabidiol are substantially free from monoterpenes and sesquiterpenes and moreover free from alkaloids and flavonoids, and contain practically no chlorophylls.

[0049] Where a hemp of the drug type is used as a starting material, Δ^9 -THC is the main constituent of the primary extract, and CBD the second highest proportion.

[0050] Where, however, a hemp of the fiber type is used as a starting material, which is being preferred, CBD and in a given case the carboxylic acids thereof are found as the main constituents of the primary extract.

[0051] The primary extract of the invention contains at least reduced proportions of monoterpene and sesquiterpene hydrocarbons, alkaloids, flavonoids and chlorophylls, and is preferably already free from these components, in particular from alkaloids, flavonoids and chlorophylls.

[0052] Where undesirable waxes are present in certain industrial and drug hemp varieties, these are purified after completed primary extraction and decarboxylation by subsequent dissolution of the primary extract, e.g., in cold (20° C.) ethanol or ethanol solution, and separated from the non-

dissolved wax by filtration. The filtration residue amounts to approximately 3 - 5%. In order to obtain the purified extract, the solvent, e.g. ethanol, is again removed under reduced pressure.

[0053] In order to obtain Δ^9 -THC and CBD from the primary extract thus purified, the cannabidiol carboxylic acids and Δ^9 -tetrahydrocannabinol carboxylic acids contained in the primary extract are decarboxylated into cannabidiol and Δ^9 -tetrahydrocannabinol through increase in temperature.

[0054] Where Δ^9 -THC is to be obtained as the main constituent or in pure form the CBD may be reacted into Δ^9 -THC through catalyzed cyclization.

[0055] Here a Δ^8 -THC may form depending on process conditions, which in itself also possesses interesting pharmacological properties. Thus Δ^8 -THC may, for example, be employed as an antiemetic in pediatric oncology.

[0056] Where the primary extract was obtained from fiber hemp and the entire CBD is to be transformed to Δ^8 -THC and Δ^9 -THC, cyclization into Δ^8 -THC and Δ^9 -THC takes place during preparation of the secondary extract. Cyclization takes place under the following conditions:

[0057] The decarboxylated primary extract is mixed with a water-binding agent and a catalyst defined more closely hereinbelow. The mixture is treated in a high-pressure extraction plant (FIG. 2) with supercritical CO_2 , preferably at 300 bar and 70° C. By this treatment, the CBD present in the primary extract is substantially reacted to Δ^8 -THC and Δ^9 -THC.

[0058] The obtained extract is separated out under pressure and temperature conditions subcritical for CO_2 , preferably at approx. 55 bar and approx. 25° C.

[0059] As a water-binding agent zeolitic molecular sieves having a pore size of 3-10 Å, preferably 5 Å may be used, and useful catalysts are metal-containing halogen salts containing the metals tin zinc, iron or titanium, preferably zinc chloride.

[0060] The secondary extract thus obtained only contains very little CSD and is highly enriched in Δ^8 -THC and Δ^9 -THC.

[0061] Suitably for obtaining pure or nearly pure Δ^9 -THC or Δ^8 -THC, respectively, a treatment in a high-pressure apparatus with supercritical CO_2 is performed as described in the following (FIG. 3).

[0062] To this end, preferably a high-pressure column (FIG. 3) subdivided into segments, comprising a bottom segment for dissolving the primary extract in supercritical CO_2 , a purification segment filled, e.g., with silica gel (mean particle size of 0.02 mm to 0.2 mm, preferably 0.1 mm), a head segment for discharging the mixture dissolved in supercritical CO_2 of CBD, Δ^8 -THC and Δ^9 -THC into three separating vessels for separate separation of the purified CBD and the purified Δ^8 -THC and THC.

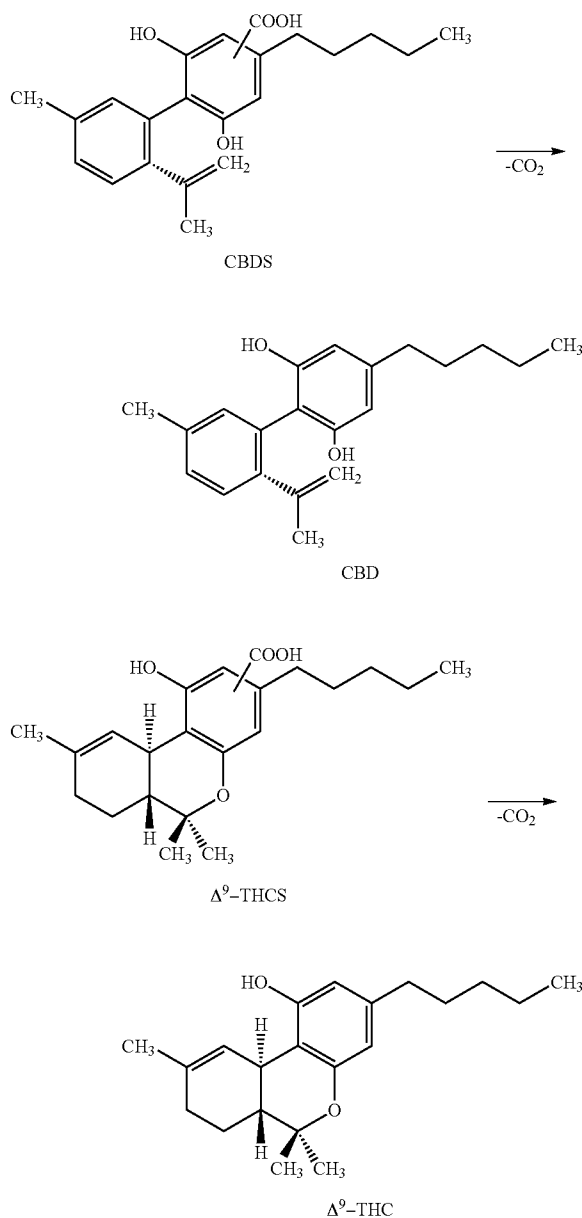
[0063] The extraction conditions prevailing for purification in the column are supercritical for CO_2 , preferably 180 bar and 55° C., in the first separating vessel where CBD is separated out for CO_2 subcritical conditions in terms of pressure and supercritical conditions in terms of temperature, preferably 70 bar and 50° C., in the second and third separating vessels, where Δ^8 -THC and Δ^9 -THC are separated out, conditions subcritical for CO_2 in terms of pressure and temperature are to prevail, in the second separating vessel preferably 60 bar and 30° C., in the third separating vessel preferably 55 bar and 25° C.,

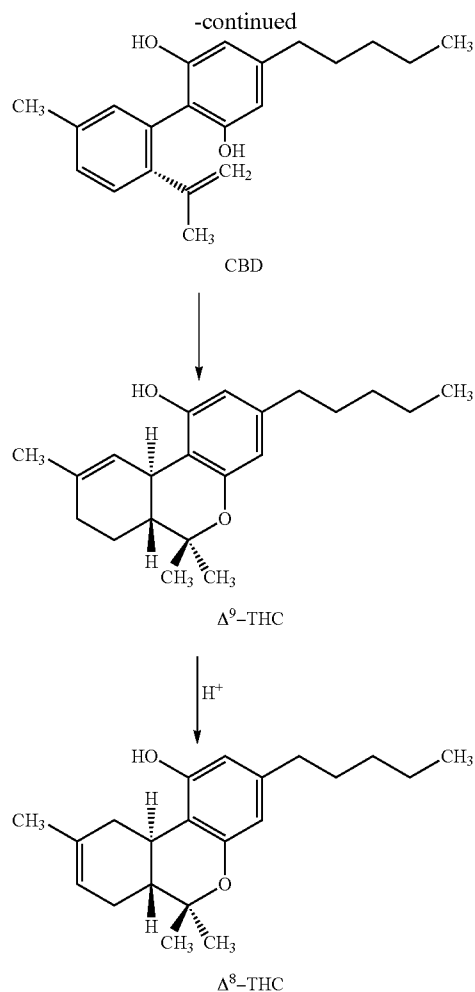
[0064] If fiber hemp is used, it may possibly be necessary to further purify the tetrahydrocannabinol products Δ^8 -THC and

Δ^9 -THC thus obtained with the aid of additional processes such as preparative chromatography or HPLC.

[0065] Where the primary extract was obtained from drug hemp and purified CBD is furthermore desired as an end product besides purified Δ^9 -THC, the cyclization of CBD into Δ^8 -THC and Δ^9 -THC, or the production of a secondary extract is omitted, THC is an isomer of Δ^9 -THC and forms substantially during the cyclization of CBD to Δ^9 -THC as well as in the presence of acids. Under certain circumstances it is necessary for the Δ^8 -THC, Δ^9 -THC and CBD thus obtained to be purified by further processes such as preparative chromatography or HPLC.

[0066] The reaction scheme of these reactions is given below:





[0067] As may be seen from the scheme of formulae, Δ⁹-THC may under the action of acids isomerize to Δ⁸-THC.

[0068] As cannabidiol taken for itself has interesting pharmacological properties while further lacking the psychotropic hallucinogenic effect of Δ⁹-THC, cannabidiol itself is also of interest for practical application because it may be used, e.g., as an anti-epileptic.

[0069] Cannabidiol may be obtained in accordance with the inventive process of claim 15.

[0070] Δ⁸-THC by itself also has substantially lower psychotropic hallucinogenic effects than Δ⁹-THC and may be obtained in accordance with claim 14.

BRIEF DESCRIPTION OF THE DRAWINGS

[0071] Further advantages and features of the present invention result from the description of practical examples and from the drawings, wherein:

[0072] FIG. 1 is a schematic representation of a CO₂ extraction plant for producing the primary extract of the invention;

[0073] FIG. 2 is a schematic representation of a CO₂ extraction plant for producing a secondary extract highly enriched in Δ⁸-THC and Δ⁹-THC; and

[0074] FIG. 3 is a schematic representation of a CO₂ extraction plant for separation of a primary and/or secondary extract in CBD optionally Δ⁸-THC and Δ⁹-THC in a high-pressure column,

DETAILED DESCRIPTION OF THE INVENTION

[0075] Ground *Cannabis* plant material comprised substantially of inflorescences and leaves is charged into extracting vessels 1-4, CO₂ having been brought to a temperature of approx. 60° C. and to a pressure of approx. 250 bar, enters into contact with the material to be extracted in the extracting vessels 1-4 and extracts the desired cannabinoid components, in particular comprising Δ⁹-tetrahydrocannabinol and cannabidiol as well as the carboxylic acids thereof. Suitably for extraction a flow rate of 50-150 kg of CO₂/kg of starting material is used.

[0076] At the upper end of extracting vessel 4, an extract enriched in the cannabinoids leaves the vessel via conduit 6a and arrives at the bottom of separating vessel 5a. The separating vessels 5a and 5b are in the exemplary case filled with various zeolitic molecular sieves and with diatomaceous earth as an adsorbent. In separating vessels 5a and 5b, the same pressure and temperature conditions prevail as in extracting vessels 1-4. The zeolitic molecular sieves placed in container 6a have an internal surface of approx. 800 m²/g, the zeolitic molecular sieves placed in container 5b have an internal surface of approx. 1200 m²/g.

[0077] By charging containers 6a and 5b with molecular sieves—preferred, however not indispensable—alkaloids, flavonoids and chlorophylls are further separated from the CO₂ loaded with extract. This CO₂ extraction mixture thus purified exits from the head of vessel 5b via conduit 7, pressure regulation valve 8, with extraction pressure being reduced to less than 75 bar, in the exemplary case to approx. 60 bar. The CO₂ extract mixture then arrives at heat exchanger 9 where it is heated to a temperature supercritical for CO₂, preferably to 45° C.

[0078] Under these pressure and temperature conditions, extraction of that extract portion takes place in the separating vessel 10 which essentially still contains undesirable monoterpenes and sesquiterpenes. The extract mixture consisting of CO₂ and essentially of Δ⁹-THC and cannabidiol as well as the carboxylic acids thereof, exits from separating vessel 10 via conduit 11, pressure regulation valve 12, heat exchanger 13, and finally is conveyed into separating vessel 14.

[0079] With the aid of pressure regulation valve 12, the separation pressure in container 14 is set to pressure conditions subcritical for CO₂, in the exemplary case 50 bar. The separation temperature in vessel 14 is controlled by heat exchanger 13 to a temperature subcritical for CO₂, in the exemplary case about 20° C. Under these conditions the pure CO₂ is separated from the primary extract enriched in Δ⁹-THC and cannabidiol and the carboxylic acids thereof in separating vessel 14.

[0080] The pure CO₂ is conveyed via conduit 15 to liquefier 17 that is equipped with a condenser coil 16. From here the liquid CO₂ is supplied via pressurizing pump 18 to heat exchanger 19, to be available for the following extraction cycle.

[0081] For opening the extracting vessel, i.e., for charging and emptying the vessels with, or of, the starting material, the CO₂ is either vented directly via conduit 21, or supplied via conduit 20 to recycling plant 22 which then pumps the liquid CO₂ into the CO₂ storage vessel 23.

[0082] FIG. 2 shows a schematic representation of a CO₂ extraction plant for producing a secondary extract highly enriched in Δ⁸-THC and Δ⁹-THC.

[0083] For the reaction, in particular the decarboxylation, of the cannabinoid carboxylic acids contained in the primary extract into Δ⁹-THC and CBD, the primary extract in the exemplary case is treated during about 2 hours at 80° C.

[0084] A mixture of decarboxylated primary extract, water-binding agent and catalyst is introduced into the extracting vessel 200. CO₂ at a temperature of 70° C. and a pressure of 300 bar enters into contact with the material to be extracted and extracts the desired components.

[0085] Following cyclization, the secondary extract highly enriched in Δ⁸-THC and Δ⁹-THC exits from vessel 200 at the top end of extracting vessel 200 via conduit 202 and arrives in separating vessel 205 via regulating valve 203—wherein pressure is reduced to 60 bar or 55 bar, respectively—and heat exchanger 204, the temperature being 30° C. or 25° C., respectively. Through valve 206 the secondary extract thus obtained, which contains small amounts of CBD and is highly enriched in Δ⁸-THC and Δ⁹-THC, may be withdrawn from separating vessel 205.

[0086] The pure CO₂ is conveyed via conduit 207 to liquefier 208 which is equipped with a condenser coil 209. From there the liquid CO₂ is supplied via pressurizing pump 210 to heat exchanger 211, to be available for the following extraction cycle.

[0087] FIG. 3 shows a schematic representation of a CO₂ extraction plant for separation of a primary and/or secondary extract CBD, optionally Δ⁸-THC and Δ⁹-THC, in a high-pressure column.

[0088] Via action column 300 wherein an extraction pressure of 180 bar and a temperature of 55° C. prevail, consisting of bottom segment 301a, purification segment 301b (charged with silica gel) and had segment 301c, the extract mixture dissolved in CO₂ arrives via duct 302, regulating valve 303 and heat exchanger 304 in separating vessel 305, where preferably a pressure of 70 bar and a temperature of 50° C. are to prevail. It is here that the CBD is obtained.

[0089] Via duct 307, regulating valve 308 and heat exchanger 309 the extraction mixture arrives in the second separating vessel 310, preferably with a pressure of 60 bar and a temperature of 30° C. prevailing. It is here that the separation of Δ⁸-THC takes place. Via valve 311 the obtained Δ⁸-THC may be withdrawn.

[0090] The Δ⁹-THC still dissolved in CO₂ is transferred into separating vessel 315 via duct 312, regulating valve 313 and heat exchanger 314. There it is separated out under a pressure of preferably 55 bar and a temperature of preferably 2.5° C. Via valve 316 the obtained Δ⁹-THC may be withdrawn.

[0091] The pure CO₂ is conveyed via conduit 317 to liquefier 318 which is equipped with a condenser coil 319. From here the liquid CO₂ is supplied via pressurizing pump 320 to heat exchanger 321, to be available for the following extraction cycle.

[0092] Modifications in the described plant system possible without the scope of the invention being restricted thereby.

[0093] As industrial hemp of the fiber type, in the present exemplary case the French *Cannabis sativa* variety Fedora 19 is employed. The raw drug has an average content of approx. 0.25% of Δ⁹-THC and 1.54% of CED.

[0094] As a result a primary extract having the properties indicated in Table 1 is obtained.

TABLE 1

Primary extracts from industrial hemp with different solvents			
Measured substance	EtOH primary extract	Hexane primary extract* in accordance with WO00/25127	Inventive primary CO ₂ extract
Chlorophyll	3.00%	2.85%	0.010%
CBD	14.50%	12.40%	58.000%
Δ ⁹ -THC	2.30%	2.30%	9.500%
Δ ⁸ -THC	0.00%	0.00%	0.000%
CBN	0.50%	0.50%	0.100%
Flavonoid glycosides	12.50%	8.50%	0.150%
Alkaloids:	0.20%	0.35%	0.001%
cannabisativin			
Monoterpenes:			
α-Pinene	0.02%	0.03%	0.001%
β-Pinene	0.01%	0.02%	0.001%
Myrcene	0.02%	0.02%	0.001%
Sesquiterpenes:			
Caryophyllene	0.53%	0.45%	0.020%
β-Humulene	0.18%	0.22%	0.008%
Δ-Selinene	0.10%	0.15%	0.004%

*This column relates to a test comparing the CO₂ extracts in accordance with the present invention with the prior-art hexane extracts of WO00/25127 as discussed at the outset. An industrial hemp having the following raw drug data: water content; 11.2% (wt); Δ⁹-THC 0.25% (wt); and CBD; 1.54% were extracted with hexane in accordance with WO00/25127. To this end, 100 g of air-dried, pulverized industrial hemp was extracted for 24 hours in 4 l of hexane in accordance with the Soxhlet method. The solvent was removed under reduced pressure, and the obtained extract was analyzed with a view to the parameters indicated in Table 1.

[0095] When one compares the data of the CO₂ primary extract in accordance with the present invention as shown in Table 1 with the hexane extract in accordance with WO00/25127 and the ethanol extract, initially the relatively good coincidence primary extracts obtained by means of the organic solvents is conspicuous.

[0096] Moreover in comparison with the CO₂ primary extract of the present invention, there results a disadvantageously high chlorophyll content of 3.00% for the hexane extract and of 2.85% for the ethanol extract. For the extract of the invention, the chlorophyll content thus is lower by a factor of almost 300 than in the prior-art extracts.

[0097] A low chlorophyll content is particularly advantageous because under certain circumstances, such as when a soft gelatin is used for encapsulation of the extract in the framework of galenic formulation, chlorophyll may involve cross-reticulations which may prevent the active principles contained in the extract from being released.

[0098] The desired CBD content is in the inventive CO₂ extract higher by a factor 4 to 5, and the Δ⁹-THC content also by a factor >4, in comparison with the prior-art solvent extracts.

[0099] If one regards the overall cannabinoid content, essentially or composed of CBD, Δ⁹-THC and CM, it may be seen that even the inventive primary CO₂ extract already is made up at more than two thirds of these constituents, whereas the prior-art extracts only contain an overall cannabinoid content of approx. 15 to 17%.

[0100] Moreover what is conspicuous in comparison with the extract of the invention are the highly elevated (more than 80-fold) flavonoid glycoside contents of the ethanol and hexane extracts.

[0101] The detected terpene and alkaloid quantities are also strongly elevated in comparison with the extracts according to the invention:

[0102] The contents of undesirable monoterpenes listed in Table 1 are higher by a factor of 10-30 than in the two primary extracts obtained with ethanol and hexane than in the CO₂ primary extract, and while the sesquiterpene content is higher by a factor 20 to 40 than in the inventive CO₂ extracts.

[0103] It is moreover noted that the primary extracts obtained with the aid of lipophilic solvents contain the alkaloids that are readily soluble in these solvents, such as, cannabistatin which is highly cytotoxic. This alkaloid contamination may very well also still occur in an extract prepared in accordance with WO00/25127 from the primary extract described there, following additional purification and enrichment steps in accordance with WO00/25127 which extract is said to have a 98% content of Δ⁹-THC.

[0104] In contrast, already the primary extracts of the invention without any further purification steps—as shown in Table 1—practically do not contain any more cannabistatin.

[0105] Thus the ethanol extract contains about 200 times more toxic alkaloids, in particular the highly cytotoxic cannabistatin, and the hexane extract in accordance with WO00/25127 even about 350 times more than the CO₂ primary extract of the invention.

[0106] Thus the CO₂ extracts of the present invention are superior both to the hexane extracts in accordance with WO00/25127 and to the customary ethanol extracts, because of their high cannabinoid contents and the fact that they are largely free from alkaloids, flavonoid glycosides, mono- and sesquiterpenes.

[0107] What is particularly advantageous is the circumstance that the present invention starts out from a hemp having a THC proportion near Zero, which is not even the case in WO00/25127 as this reference starts out from higher THC concentrations in the raw drug inasmuch as drug hemp, not industrial hemp is extracted there.

[0108] In view of this very fact it thus is already surprising that THC and cannabinoids may at all be enriched in technically useful amounts from readily available industrial hemp by means of CO₂ extraction.

[0109] Table 2 shows the components of a secondary extract after completed azeotropic distillation.

TABLE 2

Secondary extract following cyclization (FIG. 2)	
Measured substance	CO ₂ secondary extract
	P ₁ = 300 bar T ₁ = 70° C. P ₂ = 55 bar T ₂ = 25° C.
Chlorophyll	0.01%
CBD	1.5%
Δ ⁹ -THC	41.2%
Δ ⁸ -THC	24.3%
CBN	0.1%

[0110] Table 3 shows the components of a primary extract purified by high-pressure column in accordance with FIG. 3.

TABLE 3

Purified primary extract after chemical purification in a high-pressure column (FIG. 3)			
Measured substance	Purified primary extract		
	P ₁ = 180 bar T ₁ = 55° C. P ₂ = 70 bar (separating vessel No. 5) T ₂ = 50° P ₃ = 60 bar (separating vessel No. 10) T ₃ = 30° C. P ₄ = 55 bar (separating vessel No. 15) T ₄ = 25° C.		
	Separator No. 5	Separator No. 10	Separator No. 15
Chlorophyll	0.01%	0.01%	0.01%
CBD	85.0%	0.0%	1.5%
Δ ⁹ -THC	2.0%	0.0%	87.0%
Δ ⁸ -THC	0.0%	0.0%	0.0%
CBN	0.1%	0.1%	0.1%

[0111] Table 4 shows the components of a secondary extract which was purified in a high-pressure column.

TABLE 4

Purified secondary extract following purification in a high-pressure column (FIG. 3)			
Measured substance	Purified secondary extract		
	P ₁ = 180 bar T ₁ = 55° C. P ₂ = 70 bar (separating vessel No. 5) T ₂ = 50° C. P ₃ = 60 bar (separating vessel No. 10) T ₃ = 30° C. P ₄ = 55 bar (separating vessel No. 15) T ₄ = 25° C.		
	Separator No. 5	Separator No. 10	Separator No. 15
Chlorophyll	0.01%	0.01%	0.01%
CBD	90.0%	0.1%	0.3%
Δ ⁹ -THC	0.5%	1.0%	96.0%
Δ ⁸ -THC	0.2%	85.0%	1.5%
CBN	0.1%	0.1%	0.1%

[0112] It is, of course, fundamentally possible to use a drug hemp for carrying out the process of the invention,

[0113] The above mentioned primary extract is treated further in accordance with the description in FIG. 2 and FIG. 3 and is suited as an active principle for the production of a medicament for the indications described at the outset.

[0114] Suitable application types are inhalation, oral, parenteral, as well as enteral application.

What is claimed is:

1. A process for producing an extract containing tetrahydrocannabinol, cannabidiol and optionally the carboxylic acids thereof from dried comminuted industrial hemp plant material, comprising extracting said plant material by means of CO₂

(a) under supercritical pressure and temperature conditions at a temperature in a range of approx. 31° C. to 80° C. and at a pressure in a range of approx. 75 bar or 500 bar, or

(b) in liquefied form in the subcritical range at a temperature of approx. 20° C. to 30° C. and a supercritical pressure of approx. 100 bar to 350 bar; or

(c) in liquefied form under subcritical pressure and temperature conditions; and

separating the obtained primary extract including cannabidiol out under subcritical conditions or under conditions subcritical in terms of pressure and supercritical in terms of temperature.

2. The process according to claim 1, wherein said industrial hemp is *Cannabis sativa* L.

3. The process according to claim 1, wherein in said extraction step an entraining agent is added to the CO₂ which entraining agent is selected from the group consisting of propane, butane, ethanol, and water.

4. The process according to claim 1, wherein in the supercritical range a temperature of approx. 45° C. to approx. 65° C. and a pressure of approx. 100 bar to 350 bar are used.

5. The process according to claim 1, wherein in the supercritical range a temperature of approx. 60° C. and a pressure of approx. 250 bar are used.

6. The process according to claim 1, wherein an adsorbent for extracting components other than tetrahydrocannabinol, cannabidiol and the carboxylic acids thereof is arranged downstream in terms of the CO₂ flow.

7. The process according to claim 6, wherein the adsorbent is selected from the group consisting of silica gel, diatomaceous earth, bentonites, bleaching earth, activated carbons, magnesium oxide and alumina, as well as mixtures thereof.

8. The process according to claim 1, wherein extraction is repeated at least once.

9. The process according to claim 8, wherein extraction is with diatomaceous earth and/or another adsorbent.

10. A primary extract from *cannabis* plant material, containing tetrahydrocannabinol and cannabidiol and optionally the carboxylic acids thereof, wherein said extract is obtained by a process comprising

extracting dried comminuted *Cannabis* plant material by means of CO₂

(a) under supercritical pressure and temperature conditions at a temperature in a range of approx. 31° C. to 80° C. and at a pressure in a range of approx. 75 bar or 500 bar, or

(b) in liquefied form in the subcritical range at a temperature of approx. 20° C. to 30° C. and a supercritical pressure of approx. 100 bar to 350 bar; or

(c) in liquefied form under subcritical pressure and temperature conditions; and

separating the obtained primary extract including cannabidiol out under subcritical conditions or under conditions subcritical in terms of pressure and supercritical in terms of temperature and wherein said extract contains at least reduced proportions of monoterpene and sesquiterpene hydrocarbons, alkaloids, flavonoids and chlorophylls.

11. A primary extract according to claim 10, wherein said tetrahydrocannabinol includes at least Δ^9 -tetrahydrocannabinol and/or Δ^8 -tetrahydrocannabinol and/or the carboxylic acids thereof.

12. A primary extract according to claim 10, wherein said tetrahydrocannabinol and/or the carboxylic acids thereof are the main constituent of the extract.

13. A primary extract according to claim 10, wherein said extract is dissolved in ethanol, separated from waxes not soluble therein, and the solvent is again removed under reduced pressure.

14. The process of claim 1, wherein said industrial hemp contains 0.5% of Δ^9 -THC or less based on the dry plant mass.

15. The process of claim 14, wherein said industrial hemp contains 0.3% of Δ^9 -THC or less based on the dry plant mass.

* * * * *