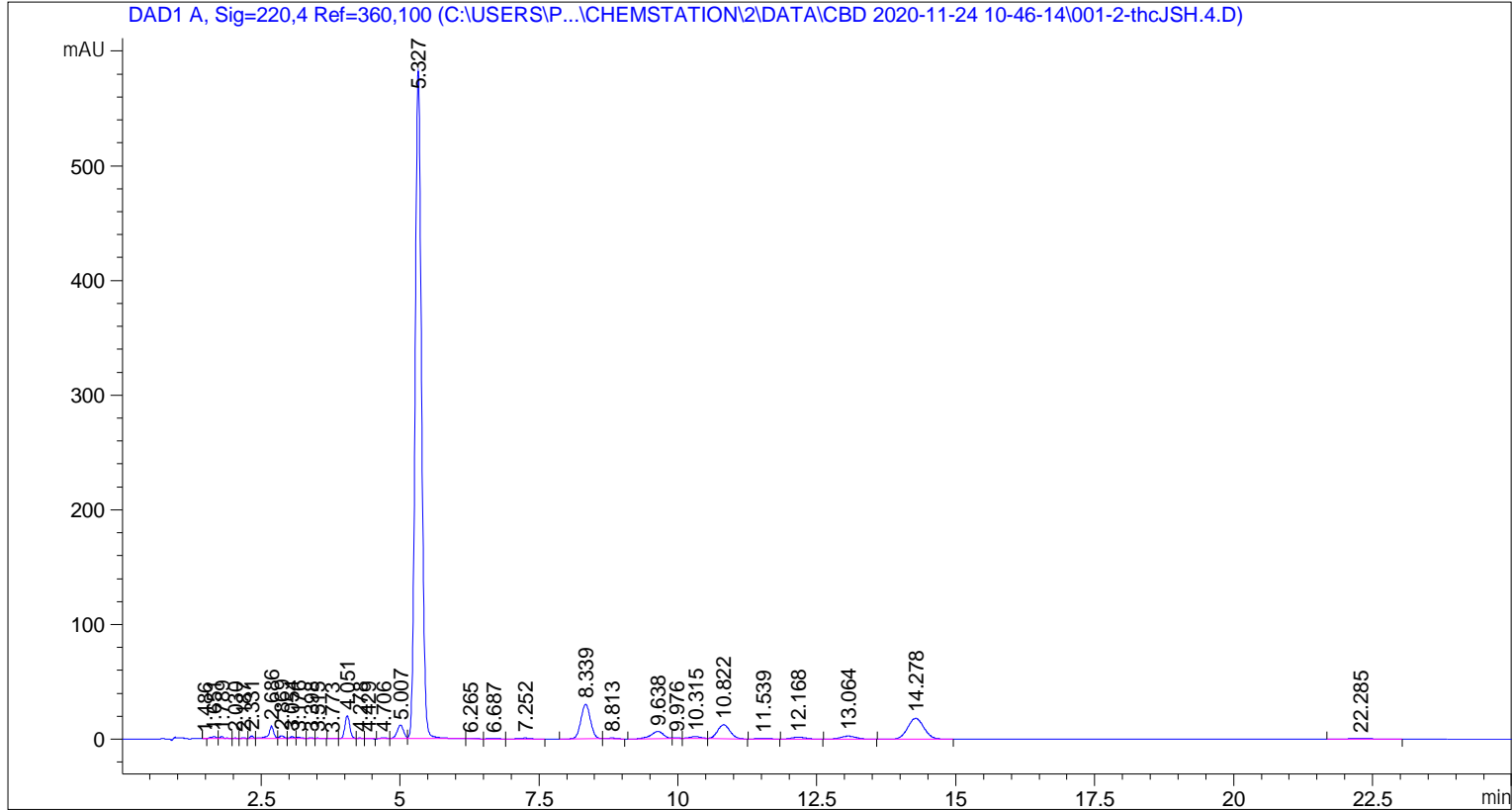


```

=====
Acq. Operator   : SYSTEM                               Seq. Line :    1
Sample Operator : SYSTEM
Acq. Instrument : 1100 LC                             Location  :    2
Injection Date  : 11/24/2020 10:48:41 AM             Inj       :    1
                                                    Inj Volume: 5.000 µl

Acq. Method    : C:\Users\Public\Documents\ChemStation\2\Data\CBD 2020-11-24 10-46-14\CBD.M
Last changed   : 5/18/2020 9:15:46 AM by SYSTEM
Analysis Method : C:\Users\Public\Documents\ChemStation\2\Methods\CBD.M
Last changed   : 12/3/2020 7:22:58 AM by SYSTEM
  
```



=====
 Area Percent Report
 =====

```

Sorted By      : Signal
Multiplier     : 1.0000
Dilution       : 1.0000
Use Multiplier & Dilution Factor with ISTDs
  
```

Signal 1: DAD1 A, Sig=220,4 Ref=360,100

Peak #	RetTime [min]	Type	Width [min]	Area [mAU*s]	Height [mAU]	Area %
1	1.486	BV T	0.0410	3.72643e-1	1.49834e-1	5.963e-3
2	1.651	VH R	0.1062	12.51324	1.77534	0.2002
3	1.789	HB	0.0830	10.49754	1.94262	0.1680
4	2.030	HH	0.0600	1.69822	4.50700e-1	0.0272
5	2.187	HH	0.0686	3.57613	8.59150e-1	0.0572
6	2.331	BH	0.0642	10.11820	2.44928	0.1619
7	2.686	HH	0.0957	71.49681	11.01233	1.1441
8	2.869	HH	0.0921	16.45471	2.66221	0.2633

Sample Name: thcJSH.4

Peak #	RetTime [min]	Type	Width [min]	Area [mAU*s]	Height [mAU]	Area %
9	3.054	HH	0.0913	10.19529	1.76704	0.1631
10	3.176	HH	0.1039	8.85318	1.23099	0.1417
11	3.398	HH	0.0923	4.94282	7.98117e-1	0.0791
12	3.515	HB	0.0837	2.85239	5.22534e-1	0.0456
13	3.773	BH	0.0868	2.21748	4.12120e-1	0.0355
14	4.051	HH	0.0972	126.07376	20.09371	2.0174
15	4.278	HH	0.1044	4.17267	6.05374e-1	0.0668
16	4.429	HB	0.0985	3.47015	5.43192e-1	0.0555
17	4.706	BH	0.1151	7.46675	1.04793	0.1195
18	5.007	HH	0.1274	98.15247	12.00237	1.5706
19	5.327	HH	0.1257	4666.68457	580.94287	74.6749
20	6.265	HB	0.1564	2.04704	1.92025e-1	0.0328
21	6.687	HB	0.1710	5.91216	5.43168e-1	0.0946
22	7.252	HB	0.2012	10.75309	7.78402e-1	0.1721
23	8.339	BH	0.1868	357.81317	30.07886	5.7256
24	8.813	HB	0.1827	7.24968	6.47270e-1	0.1160
25	9.638	BH	0.2358	103.09568	6.54494	1.6497
26	9.976	HH	0.1482	5.12529	5.14457e-1	0.0820
27	10.315	HH	0.2413	27.84169	1.79116	0.4455
28	10.822	HB	0.2473	191.72566	12.20205	3.0679
29	11.539	HB	0.2329	8.65959	5.71191e-1	0.1386
30	12.168	BB	0.2703	27.49100	1.61751	0.4399
31	13.064	HB	0.2973	48.99790	2.58342	0.7841
32	14.278	BH	0.3190	371.75473	18.14549	5.9487
33	22.285	BB	0.4646	19.05575	5.90354e-1	0.3049

Totals : 6249.33147 718.06801

=====
*** End of Report ***