



CERTIFICATE OF ANALYSIS WITH PRODUCT SPECIFICATIONS

PRODUCT: CBD Distillate
PRODUCT CODE: 685155
PRODUCT DESCRIPTION: Nutritional Supplement
LOT NUMBER: 092721
MFG DATE: September 27, 2019

MICRO ANALYSIS

PARAMETER	UNIT OF MEASURE	STANDARD	MEAN RESULT
Aerobic Plate Count	cfu/g	< 10,000	Conforms
Coliforms	cfu/g	0	Not Detected
E. Coli Count Plate	cfu/g	0	Not Detected
Yeast & Mold	cfu/g	< 1	Not Detected
Salmonella	BAM /25g	Negative	Negative
Coag Positive Staph Aure	cfu/g	0	Not Detected
Heavy Metal	ICP-MS		Conforms
Arsenic	Ppm	Report Only	Not Detected
Cadmium	Ppm	Report Only	Not Detected
Lead	Ppm	Report Only	Not Detected
Mercury	Ppm	Report Only	Not Detected

Cannabinoid Profile / % by volume

Component	%
CBD	81.76
CBDA	N/D
CBG	0.06
CBN	2.20
CBC	2.19
D8THC	N/D
D9THC	N/D
Total Cannabinoids	86.21

USES: Nutritional Supplement.
DOSAGE: 1 to 2 drops daily.
STORAGE: Cool and dry, below 30c.
SHELF LIFE: 24 months unopened – 12 months after opening in sealed container.
INGREDIENTS LIST: Pyto Rich Hemp Extract.
PACKAGING: Bulk.

CERTIFICATION: This product is in compliance with U.S. federal regulations.

ARSNLabs
3043 Alhambra Drive
Cameron Park, CA 95682

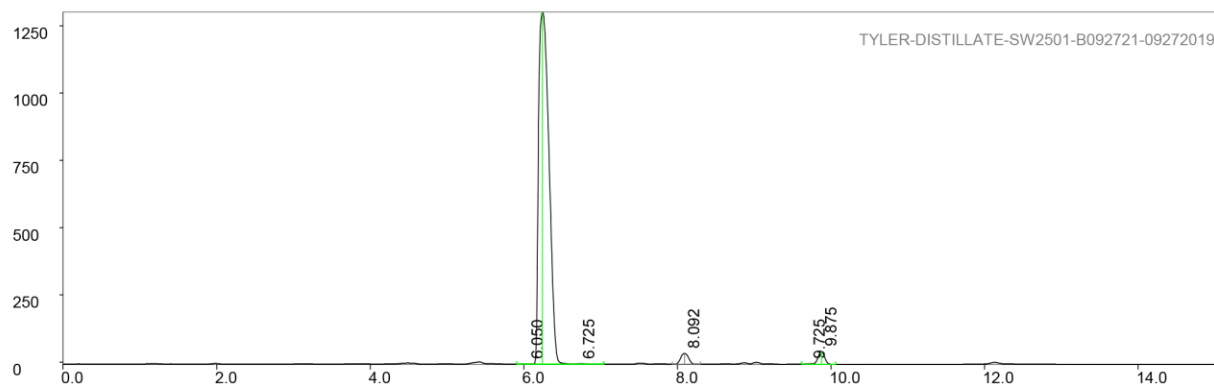
877-863-7700
www.arsnlabs.com
testing@arsnlabs.com



CERTIFICATE OF ANALYSIS WITH PRODUCT SPECIFICATIONS

Chromatograph

PAGE 1 LP-chrom 2.10 2018-Dec-16 12:28:08



Program: LP-chrom 2.10 2018-Dec-16 12:28:08
Running under: Windows NT 6.2 (build 9200)
Plot: C:\Users\Lab\Desktop\data\TYLER-DISTILLATE-SW2501-B092721-09272019
Exported: 09/27/19 16:59:35.639
Program: LP-chrom 2.10 2018-Dec-16 12:28:08
System: Windows NT 6.2 (build 9200)
Chromatograph using method:
from file: cannabinoids

Analytical pump method (max flow = 10 [ml/min])

TIME	FLOW	%A	%B
0.0	0.700	30	70
0.5	0.700	30	70
6.0	0.700	5	95
12.0	0.700	5	95
12.1	0.700	30	70
15.0	0.700	30	70

Autozero before rec

Detector Beckman 166 DET/3 on serial port:COM4

Det:A, wavelen 280 nm

Pump A: Beckman 126 PUMP/1 on serial port:COM4

peak num	retention time [min]	area [mVolt*min]	area percent [%]	height [mVolt]	begin [min]	end [min]	max Y [mVolt]	type (S)ingle (R)+(L)
1	6.05000	0.14067	0.06558	1.12019	5.90833	6.11667	-4.99461	R+
2	6.24167	204.52611	95.34428	1307.71836	6.11667	6.63333	1301.54785	R+L
3	6.72500	0.27785	0.12953	1.49929	6.63333	7.04167	-4.81170	+L
4	8.09167	4.72158	2.20107	40.09129	7.93333	8.30000	33.60825	S
5	9.72500	0.13553	0.06318	1.86058	9.61667	9.75000	-4.84329	R+
6	9.87500	4.71150	2.19637	47.67348	9.75000	10.05833	40.76747	+L

Sum area: 214.51325

Peaks accepted: 6 (excluded: 60 total: 66)

ARSNLabs
3043 Alhambra Drive
Cameron Park, CA 95682

877-863-7700
www.arsnlabs.com
testing@arsnlabs.com