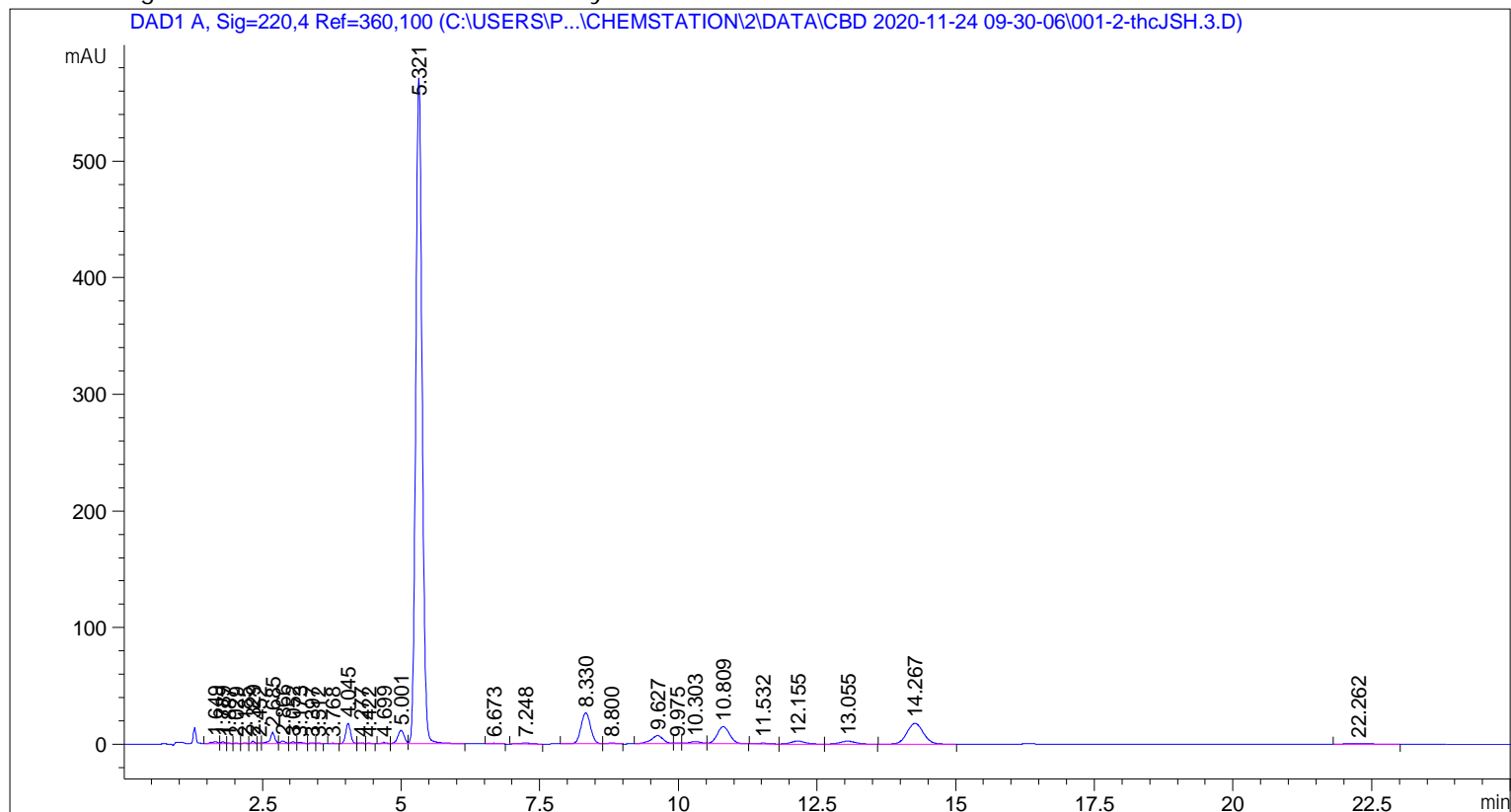


```

=====
Acq. Operator   : SYSTEM                               Seq. Line :    1
Sample Operator : SYSTEM
Acq. Instrument : 1100 LC                             Location  :    2
Injection Date  : 11/24/2020 9:32:31 AM              Inj       :    1
                                                    Inj Volume: 5.000 µl

Acq. Method     : C:\Users\Public\Documents\ChemStation\2\Data\CBD 2020-11-24 09-30-06\CBD.M
Last changed    : 5/18/2020 9:15:46 AM by SYSTEM
Analysis Method : C:\Users\Public\Documents\ChemStation\2\Methods\CBD.M
Last changed    : 12/3/2020 7:22:58 AM by SYSTEM
  
```



=====
 Area Percent Report
 =====

```

Sorted By      :      Signal
Multiplier     :      1.0000
Dilution      :      1.0000
Use Multiplier & Dilution Factor with ISTDs
  
```

Signal 1: DAD1 A, Sig=220, 4 Ref=360, 100

Peak #	RetTime [min]	Type	Width [min]	Area [mAU*s]	Height [mAU]	Area %
1	1.649	BH	0.1014	10.85639	1.55654	0.1792
2	1.789	HH	0.0620	6.20078	1.57289	0.1024
3	1.887	HH	0.0756	1.46204	3.30651e-1	0.0241
4	2.029	BH	0.0571	1.63279	4.64013e-1	0.0270
5	2.185	HH	0.0614	2.84171	7.29922e-1	0.0469
6	2.329	BH	0.0648	7.77523	2.02658	0.1284
7	2.452	HH	0.0615	1.82578	4.68180e-1	0.0301
8	2.685	HH	0.0900	56.04083	9.33413	0.9252

Sample Name: thcJSH.3

Peak #	RetTime [min]	Type	Width [min]	Area [mAU*s]	Height [mAU]	Area %
9	2.866	HH	0.0902	12.05280	2.12549	0.1990
10	3.052	HH	0.0811	7.10867	1.35649	0.1174
11	3.173	HH	0.0875	6.39766	1.04361	0.1056
12	3.397	BH	0.0764	2.45996	5.08594e-1	0.0406
13	3.512	HB	0.0666	1.33134	3.06844e-1	0.0220
14	3.768	BH	0.0795	1.98359	3.88768e-1	0.0327
15	4.045	BH	0.0957	105.73467	17.20870	1.7457
16	4.277	HH	0.0884	2.29715	4.16070e-1	0.0379
17	4.422	HB	0.0852	1.67372	3.19209e-1	0.0276
18	4.699	BH	0.1031	5.61557	8.72118e-1	0.0927
19	5.001	HH	0.1241	90.81725	11.49797	1.4994
20	5.321	HB	0.1254	4561.78369	569.88971	75.3139
21	6.673	BB	0.1729	4.91581	4.74456e-1	0.0812
22	7.248	HB	0.2009	9.82110	7.30105e-1	0.1621
23	8.330	BB	0.1865	316.08411	26.62782	5.2185
24	8.800	HB	0.1793	5.87563	5.38415e-1	0.0970
25	9.627	BH	0.2323	106.29324	6.87845	1.7549
26	9.975	HH	0.1248	2.14781	2.58805e-1	0.0355
27	10.303	HH	0.2189	22.68426	1.58605	0.3745
28	10.809	HB	0.2405	225.03517	14.54389	3.7153
29	11.532	HB	0.2397	8.42391	5.59440e-1	0.1391
30	12.155	BB	0.2681	43.25457	2.52250	0.7141
31	13.055	HB	0.2977	46.20599	2.43116	0.7628
32	14.267	BB	0.3191	363.45929	17.73554	6.0006
33	22.262	HB	0.4268	14.93268	4.91071e-1	0.2465

Totals : 6057.02517 697.79418

=====
*** End of Report ***