



# Certificate of Analysis

QA SAMPLE - INFORMATIONAL ONLY

1 of 3

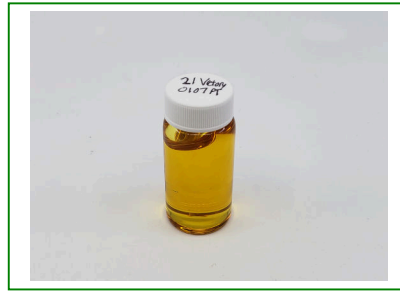
ICAL ID: 20210107-093  
Sample: CA210107-030-062  
21 Victory 0107 PT  
Strain: 21 Victory 0107 PT  
Category: Concentrates & Extracts

Imperial CBD Extraction  
Lic. #  
551 West Main Street  
Brawley, CA 92227  
Lic. #

Batch#:   
Primary Size:   
Batch Size:   
Collected: 01/11/2021; Received: 01/11/2021  
Completed: 01/11/2021

Moisture NT Water Activity NT	Total THC <b>2.69%</b>	Total CBD <b>79.17%</b>	Total Cannabinoids <b>86.08%</b>	Total Terpenes NT
--	---------------------------	----------------------------	-------------------------------------	----------------------

<b>Summary</b>	SOP Used	Date Tested	Complete
Batch	SOP:POT-E001-Extract	01/08/2021	Complete
Cannabinoids			Complete



Scan to see results

## Cannabinoid Profile

Analyte	LOQ	LOD	%	mg/g	Analyte	LOQ	LOD	%	mg/g
THCa	0.03	0.02	ND	ND	CBDV	0.03	0.02	0.65	6.5
Δ9-THC	0.03	0.02	2.69	26.9	CBN	0.03	0.02	0.32	3.2
Δ8-THC	0.03	0.02	0.04	0.4	CBGa	0.03	0.02	ND	ND
THCV	0.03	0.02	ND	ND	CBG	0.03	0.02	3.02	30.2
CBDa	0.03	0.02	ND	ND	CBC	0.03	0.02	0.20	2.0
CBD	0.03	0.02	79.17	791.7	<b>Total THC</b>			<b>2.69</b>	<b>26.9</b>
					<b>Total CBD</b>			<b>79.17</b>	<b>791.7</b>
					<b>Total</b>			<b>86.08</b>	<b>860.8</b>

Total THC=THCa \* 0.877 + d9-THC; Total CBD = CBDa \* 0.877 + CBD; NR= Not Reported, ND= Not Detected, \*Reported by Dry Mass\*; \*analytical instrumentation used Cannabinoids:UHPLC-DAD, Moisture:Mass by Drying, Water Activity:Water Activity Meter, Foreign Material:Microscope\* \*Density tested at a temperature range between 19-24 °C, \*Water Activity tested at a humidity range between 0-90% Relative Humidity. All QA samples are sampled by the client, All California State Compliant samples sampled using SAMPL-SOP-001

## Terpene Profile

Analyte	LOQ	LOD	%	mg/g	Analyte	LOQ	LOD	%	mg/g
---------	-----	-----	---	------	---------	-----	-----	---	------

NR= Not Reported thus no analysis was performed, ND= Not Detected thus the concentration is less then the Limit of Detection (LOD), \*analytical instrumentation used:HS-GC-MS\*



Infinite Chemical Analysis Labs  
8380 Miramar Mall #102  
San Diego, CA  
(858) 623-2740  
www.infiniteCAL.com  
Lic# C8-0000019-LIC

*Josh M Swider*

Josh Swider  
Lab Director, Managing Partner  
01/11/2021

Confident Cannabis  
All Rights Reserved  
support@confidentcannabis.com  
(866) 506-5866  
www.confidentcannabis.com



This product has been tested by Infinite Chemical Analysis, LLC using valid testing methodologies and a quality system as required by state law. All LQC samples were performed and met the prescribed acceptance criteria in 16 CCR section 5730, pursuant to 16 CCR section 5726(e)(13). Values reported relate only to the product tested. Infinite Chemical Analysis, LLC makes no claims as to the efficacy, safety or other risks associated with any detected or non-detected levels of any compounds reported herein. This Certificate shall not be reproduced except in full, without the written approval of Infinite Chemical Analysis, LLC.



# Certificate of Analysis

QA SAMPLE - INFORMATIONAL ONLY

2 of 3

ICAL ID: 20210107-093  
Sample: CA210107-030-062  
21 Victory 0107 PT  
Strain: 21 Victory 0107 PT  
Category: Concentrates & Extracts

Imperial CBD Extraction  
Lic. #  
551 West Main Street  
Brawley, CA 92227  
  
Lic. #

Batch#: \_\_\_\_\_  
Primary Size: \_\_\_\_\_  
Batch Size: \_\_\_\_\_  
Collected: 01/11/2021; Received: 01/11/2021  
Completed: 01/11/2021

## Residual Solvent Analysis

Category 1	LOQ	LOD	Limit	Status	Category 2	LOQ	LOD	Limit	Status	Category 2	LOQ	LOD	Limit	Status
------------	-----	-----	-------	--------	------------	-----	-----	-------	--------	------------	-----	-----	-------	--------

NR= Not Reported thus no analysis was performed, ND= Not Detected thus the concentration is less then the Limit of Detection (LOD) , \*analytical instrumentation used=HS-GC-MS\*

## Heavy Metal Screening

	LOQ	LOD	Limit	Status
--	-----	-----	-------	--------

NR= Not Reported thus no analysis was performed, ND= Not Detected thus the concentration is less then the Limit of Detection (LOD) , \*analytical instrumentation used:ICP-MS\*

## Microbiological Screening

	Result	Status
--	--------	--------

ND=Not Detected; \*analytical instrumentation used:qPCR\*



Infinite Chemical Analysis Labs  
8380 Miramar Mall #102  
San Diego, CA  
(858) 623-2740  
www.infiniteCAL.com  
Lic# C8-0000019-LIC

*Josh M Swider*

Josh Swider  
Lab Director, Managing Partner  
01/11/2021

Confident Cannabis  
All Rights Reserved  
support@confidentcannabis.com  
(866) 506-5866  
www.confidentcannabis.com



This product has been tested by Infinite Chemical Analysis, LLC using valid testing methodologies and a quality system as required by state law. All LQC samples were performed and met the prescribed acceptance criteria in 16 CCR section 5730, pursuant to 16 CCR section 5726(e)(13). Values reported relate only to the product tested. Infinite Chemical Analysis, LLC makes no claims as to the efficacy, safety or other risks associated with any detected or non-detected levels of any compounds reported herein. This Certificate shall not be reproduced except in full, without the written approval of Infinite Chemical Analysis, LLC.



# Certificate of Analysis

QA SAMPLE - INFORMATIONAL ONLY

3 of 3

ICAL ID: 20210107-093  
Sample: CA210107-030-062  
21 Victory 0107 PT  
Strain: 21 Victory 0107 PT  
Category: Concentrates & Extracts

Imperial CBD Extraction  
Lic. #  
551 West Main Street  
Brawley, CA 92227  
Lic. #

Batch#:   
Primary Size:   
Batch Size:   
Collected: 01/11/2021; Received: 01/11/2021  
Completed: 01/11/2021

## Chemical Residue Screening

Category 1	LOQ	LOD	Status	Mycotoxins	LOQ	LOD	Limit	Status
------------	-----	-----	--------	------------	-----	-----	-------	--------

Category 2	LOQ	LOD	Limit	Status	Category 2	LOQ	LOD	Limit	Status
------------	-----	-----	-------	--------	------------	-----	-----	-------	--------

### Unknown Analyte(s):

NR= Not Reported thus no analysis was performed, ND= Not Detected thus the concentration is less then the Limit of Detection (LOD) , \*analytical instrumentation used:LC-MSMS & GC-MSMS\*



Infinite Chemical Analysis Labs  
8380 Miramar Mall #102  
San Diego, CA  
(858) 623-2740  
www.infiniteCAL.com  
Lic# C8-0000019-LIC

*Josh M Swider*

Josh Swider  
Lab Director, Managing Partner  
01/11/2021

Confident Cannabis  
All Rights Reserved  
support@confidentcannabis.com  
(866) 506-5866  
www.confidentcannabis.com



This product has been tested by Infinite Chemical Analysis, LLC using valid testing methodologies and a quality system as required by state law. All LQC samples were performed and met the prescribed acceptance criteria in 16 CCR section 5730, pursuant to 16 CCR section 5726(e)(13). Values reported relate only to the product tested. Infinite Chemical Analysis, LLC makes no claims as to the efficacy, safety or other risks associated with any detected or non-detected levels of any compounds reported herein. This Certificate shall not be reproduced except in full, without the written approval of Infinite Chemical Analysis, LLC.