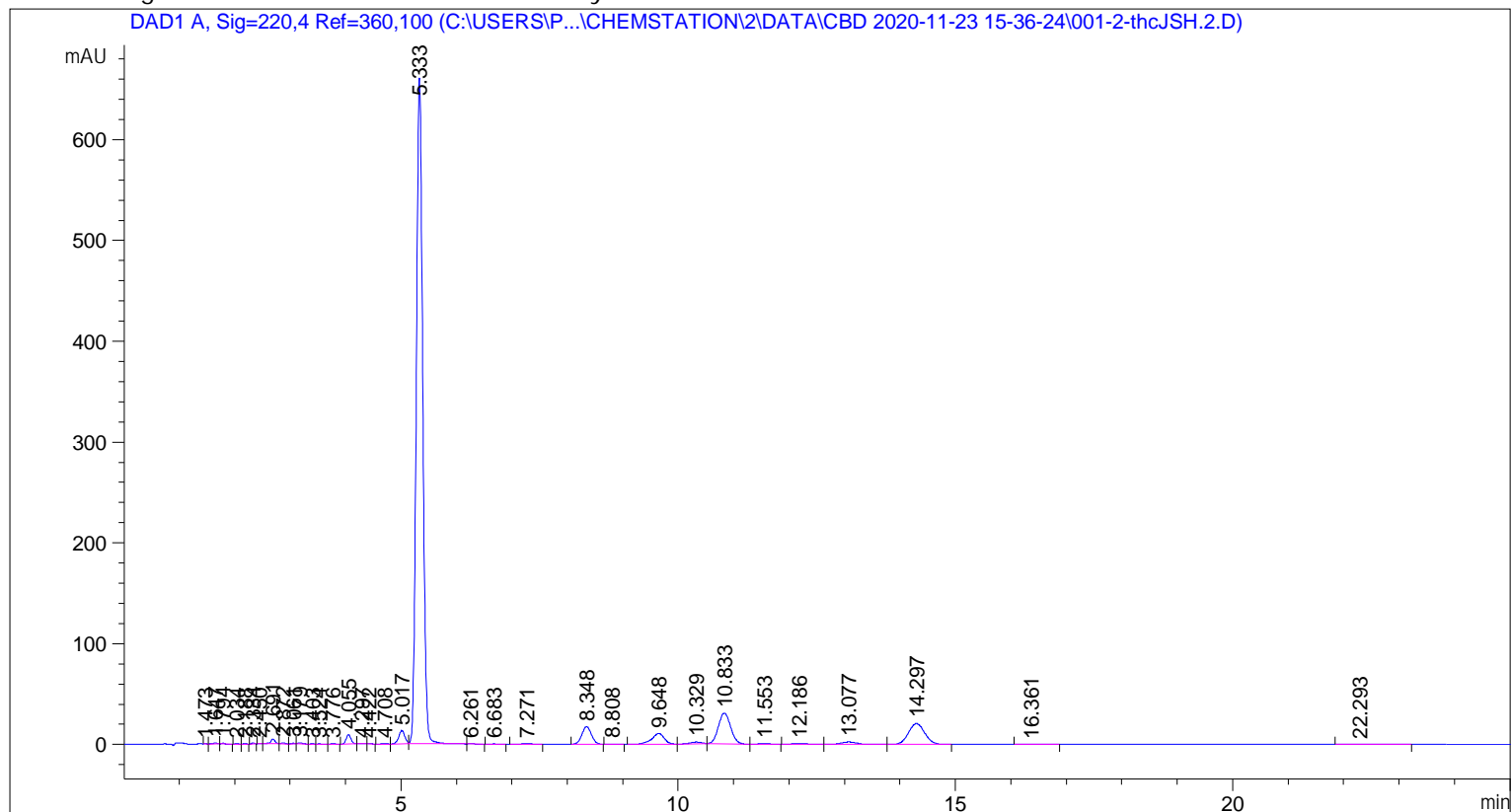


```

=====
Acq. Operator   : SYSTEM                               Seq. Line :    1
Sample Operator : SYSTEM
Acq. Instrument : 1100 LC                             Location  :    2
Injection Date  : 11/23/2020 3:38:42 PM              Inj       :    1
                                                    Inj Volume: 5.000 µl

Acq. Method     : C:\Users\Public\Documents\ChemStation\2\Data\CBD 2020-11-23 15-36-24\CBD.M
Last changed    : 5/18/2020 9:15:46 AM by SYSTEM
Analysis Method : C:\Users\Public\Documents\ChemStation\2\Methods\CBD.M
Last changed    : 12/3/2020 7:22:58 AM by SYSTEM
  
```



=====  
 Area Percent Report  
 =====

```

Sorted By      : Signal
Multiplier     : 1.0000
Dilution      : 1.0000
Use Multiplier & Dilution Factor with ISTDs
  
```

Signal 1: DAD1 A, Sig=220,4 Ref=360,100

Peak #	RetTime [min]	Type	Width [min]	Area [mAU*s]	Height [mAU]	Area %
1	1.473	BV	0.0456	4.18704e-1	1.45277e-1	6.050e-3
2	1.647	BB	0.0888	5.74970	1.03555	0.0831
3	1.794	HH	0.0674	3.14501	7.74712e-1	0.0454
4	2.034	BH	0.0607	1.96120	5.12284e-1	0.0283
5	2.188	HB	0.0613	1.48216	3.81356e-1	0.0214
6	2.334	BB	0.0581	3.27673	9.08909e-1	0.0473
7	2.450	HH	0.0556	9.50192e-1	2.79938e-1	0.0137
8	2.691	HH	0.0880	28.66138	4.91400	0.4141

Sample Name: thcJSH. 2

Peak #	RetTime [min]	Type	Width [min]	Area [mAU*s]	Height [mAU]	Area %
9	2.872	HB	0.0795	5.25786	1.03045	0.0760
10	3.061	HH	0.0709	3.01030	6.39643e-1	0.0435
11	3.179	HB	0.0857	7.04773	1.25149	0.1018
12	3.403	HB	0.0715	7.96763e-1	1.95882e-1	0.0115
13	3.524	HH	0.0773	9.56522e-1	1.94905e-1	0.0138
14	3.776	BH	0.0851	2.23459	4.26556e-1	0.0323
15	4.055	BH	0.0957	56.61021	9.21301	0.8179
16	4.297	HH	0.0973	3.73103	5.94160e-1	0.0539
17	4.422	HB	0.0869	1.25882	2.33612e-1	0.0182
18	4.708	BH	0.1007	3.42129	5.48866e-1	0.0494
19	5.017	BH	0.1234	103.26202	13.17590	1.4920
20	5.333	HH	0.1255	5284.99121	659.53259	76.3595
21	6.261	HB	0.1630	1.22780	1.12777e-1	0.0177
22	6.683	HB	0.1592	3.04229	2.97838e-1	0.0440
23	7.271	BB	0.1745	9.49192	7.99467e-1	0.1371
24	8.348	HB	0.1858	205.97258	17.43818	2.9760
25	8.808	HB	0.1732	3.04878	2.84124e-1	0.0440
26	9.648	BB	0.2359	167.31720	10.61290	2.4175
27	10.329	HH	0.2398	28.24997	1.91810	0.4082
28	10.833	HB	0.2402	475.27603	30.76833	6.8670
29	11.553	HB	0.2153	8.82148	6.00867e-1	0.1275
30	12.186	HB	0.2635	16.87949	1.00707	0.2439
31	13.077	HB	0.2900	46.02684	2.41931	0.6650
32	14.297	HH	0.3189	424.71899	20.74184	6.1365
33	16.361	HB	0.3163	4.95081	2.32649e-1	0.0715
34	22.293	HB	0.4652	7.94892	2.53939e-1	0.1148

Totals : 6921.19653 783.47648

=====  
\*\*\* End of Report \*\*\*