

## 200721-TL-I-002

Sample ID: 2007KCA0153.0417

Cultivar: N/A

Matrix: Concentrates & Extracts

Type: Cannabinoid Isolate

Sample Size:

Received: 07/22/2020

Completed: 07/27/2020

Batch#: DY-I-79

Client

**Kentucky Blu**

Lic.#

2413 Nashville Road

Bowling Green, KY 42101



### Summary

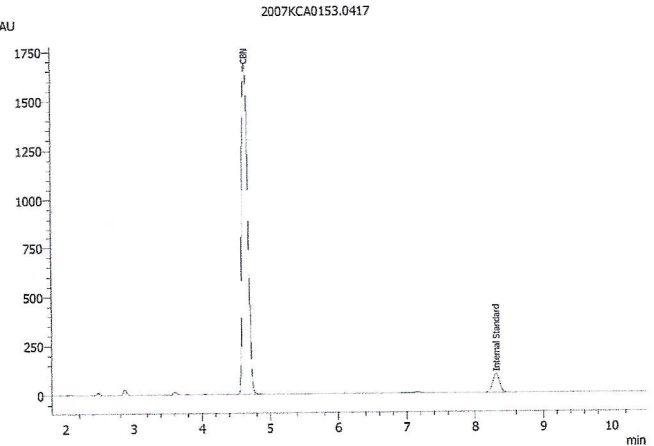
Test	Date Tested	Result
Cannabinoids	07/23/2020	Complete
Residual Solvents	07/27/2020	Complete
Pesticides	07/23/2020	Complete
Heavy Metals	07/27/2020	Complete

### Cannabinoids by HPLC-PDA

Complete

ND	ND	99.6388%	NT <small>Not Tested</small>	Not Tested
Total THC	Total CBD	Total Cannabinoids	Moisture Content	Foreign Matter

Analyte	LOD	LOQ	Result	Result	
	%	%	%	mg/g	mAU
CBC	0.0095	0.0284	ND	ND	
CBCA	0.0181	0.0543	ND	ND	
CBCV	0.0060	0.0180	ND	ND	
CBD	0.0081	0.0242	ND	ND	
CBDA	0.0043	0.0130	ND	ND	
CBDV	0.0061	0.0182	ND	ND	
CBDVA	0.0021	0.0063	ND	ND	
CBG	0.0057	0.0172	ND	ND	
CBGA	0.0049	0.0147	ND	ND	
CBL	0.0112	0.0335	ND	ND	
CBLA	0.0124	0.0371	ND	ND	
CBN	0.0056	0.0169	99.6388	996.388	
CBNA	0.0060	0.0181	ND	ND	
Δ8-THC	0.0104	0.0312	ND	ND	
Δ9-THC	0.0076	0.0227	ND	ND	
THCA	0.0084	0.0251	ND	ND	
THCV	0.0069	0.0206	ND	ND	
THCVA	0.0062	0.0186	ND	ND	
Total THC			ND	ND	
Total CBD			ND	ND	
Total			99.6388	996.388	



Total THC = THCA \* 0.877 + Δ9-THC

Total CBD = CBDA \* 0.877 + CBD

LOD = Limit of Detection

LOQ = Limit of Quantitation

ND = None Detected

For plant material, the reported result is based on a sample weight with the applicable moisture content for that sample.




Heidi Sayre  
Scientist  
07/27/2020

This product or substance has been tested by KCA Laboratories using validated testing methodologies and a quality system. Values reported relate only to the product or substance tested. KCA Laboratories makes no claims as to the efficacy, safety or other risks associated with any detected or non-detected amounts of any substances reported herein. This Certificate of Analysis shall not be reproduced except in full, without the written approval of KCA Laboratories.

**200721-TL-I-002**

Sample ID: 2007KCA0153.0417  
Cultivar: N/A  
Matrix: Concentrates & Extracts  
Type: Cannabinoid Isolate  
Sample Size:

Received: 07/22/2020  
Completed: 07/27/2020  
Batch#: DY-I-79

Client  
**Kentucky Blu**  
Lic.#  
2413 Nashville Road  
Bowling Green, KY 42101



**Heavy Metals by ICP-MS**

Complete

Analyte	LOD	LOQ	Mass
	µg/g	µg/g	µg/g
Arsenic	0.002	0.02	ND
Cadmium	0.001	0.02	ND
Lead	0.002	0.02	ND
Mercury	0.012	0.05	ND

Date Tested: 07/27/2020  
LOD = Limit of Detection  
LOQ = Limit of Quantitation  
ND = None Detected




Heidi Sayre  
Scientist  
07/27/2020

This product or substance has been tested by KCA Laboratories using validated testing methodologies and a quality system. Values reported relate only to the product or substance tested. KCA Laboratories makes no claims as to the efficacy, safety or other risks associated with any detected or non-detected amounts of any substances reported herein. This Certificate of Analysis shall not be reproduced except in full, without the written approval of KCA Laboratories.



KCA Laboratories  
232 North Plaza Drive  
Nicholasville, KY 40356

(833) 522-5227  
https://kcalabs.com  
KDA Lic.# P\_0058

**200721-TL-I-002**

Sample ID: 2007KCA0153.0417  
Cultivar: N/A  
Matrix: Concentrates & Extracts  
Type: Cannabinoid Isolate  
Sample Size:

Received: 07/22/2020  
Completed: 07/27/2020  
Batch#: DY-I-79

Client  
**Kentucky Blu**  
Lic.#  
2413 Nashville Road  
Bowling Green, KY 42101

**Pesticides by LCMS/MS & GCMS/MS**

**Complete**

Analyte	LOD PPM	LOQ PPM	Mass PPM	Analyte	LOD PPM	LOQ PPM	Mass PPM
Abamectin	0.001	0.005	ND	Fludioxonil	0.001	0.005	ND
Acephate	0.001	0.005	ND	Imazalil	0.001	0.005	ND
Acetamiprid	0.001	0.005	ND	Imidacloprid	0.001	0.005	ND
Aldicarb	0.001	0.005	ND	Kresoxim Methyl	0.001	0.005	ND
Azoxystrobin	0.001	0.005	ND	Malathion	0.001	0.005	ND
Bifenazate	0.001	0.005	ND	Metalaxyl	0.001	0.005	ND
Bifenthrin	0.001	0.005	ND	Methiocarb	0.001	0.005	ND
Boscalid	0.001	0.005	ND	Methomyl	0.001	0.005	ND
Carbaryl	0.001	0.005	ND	Mevinphos	0.001	0.005	ND
Carbofuran	0.001	0.005	ND	Myclobutanil	0.001	0.005	ND
Chlorantraniliprole	0.001	0.005	ND	Naled	0.001	0.005	ND
Chlordane	0.001	0.005	ND	Oxamyl	0.001	0.005	ND
Chlorfenapyr	0.001	0.005	ND	Pacllobutrazol	0.001	0.005	ND
Chlorpyrifos	0.001	0.005	ND	Parathion Methyl	0.001	0.005	ND
Clofentezine	0.001	0.005	ND	Pentachloronitrobenzene	0.001	0.005	ND
Coumaphos	0.001	0.005	ND	Phosmet	0.001	0.005	ND
Daminozide	0.001	0.005	ND	Piperonyl Butoxide	0.001	0.005	ND
Diazinon	0.001	0.005	ND	Propiconazole	0.001	0.005	ND
Dichlorvos	0.001	0.005	ND	Propoxur	0.001	0.005	ND
Dimethoate	0.001	0.005	ND	Pyridaben	0.001	0.005	ND
Dimethomorph	0.001	0.005	ND	Spinetoram	0.001	0.005	ND
Ethoprophos	0.001	0.005	ND	Spinosad	0.001	0.005	ND
Etofenprox	0.001	0.005	ND	Spirotetramat	0.001	0.005	ND
Etoazole	0.001	0.005	ND	Spiroxamine	0.001	0.005	ND
Fenhexamid	0.001	0.005	ND	Tebuconazole	0.001	0.005	ND
Fenoxycarb	0.001	0.005	ND	Thiacloprid	0.001	0.005	ND
Fenpyroximate	0.001	0.005	ND	Thiamethoxam	0.001	0.005	ND
Fipronil	0.001	0.005	ND	Trifloxystrobin	0.001	0.005	ND
Fonicamid	0.001	0.005	ND				

Date Tested: 07/27/2020  
LOD = Limit of Detection  
LOQ = Limit of Quantitation  
ND = None Detected



Heidi Sayre  
Scientist  
07/27/2020

This product or substance has been tested by KCA Laboratories using validated testing methodologies and a quality system. Values reported relate only to the product or substance tested. KCA Laboratories makes no claims as to the efficacy, safety or other risks associated with any detected or non-detected amounts of any substances reported herein. This Certificate of Analysis shall not be reproduced except in full, without the written approval of KCA Laboratories.



**200721-TL-I-002**

Sample ID: 2007KCA0153.0417  
Cultivar: N/A  
Matrix: Concentrates & Extracts  
Type: Cannabinoid Isolate  
Sample Size:

Received: 07/22/2020  
Completed: 07/27/2020  
Batch#: DY-I-79

Client  
**Kentucky Blu**  
Lic.#  
2413 Nashville Road  
Bowling Green, KY 42101

**Residual Solvents by HS-GC/MS**

Complete

Analyte	LOD	LOQ	Mass	Analyte	LOD	LOQ	Mass
	PPM	PPM	PPM		PPM	PPM	PPM
Acetone	0.5	1	ND	Heptane	0.5	1	ND
Acetonitrile	0.5	1	ND	Isobutane	0.5	1	ND
Benzene	0.5	1	ND	Isopropanol	0.5	1	ND
Butane	0.5	1	ND	Isopropyl-Acetate	0.5	1	ND
1-Butanol	0.5	1	ND	Methanol	0.5	1	ND
2-Butanol	0.5	1	ND	2-Methyl-Butane	0.5	1	ND
2-Butanone	0.5	1	ND	2-Methyl-Pentane	0.5	1	ND
Chloroform	0.5	1	ND	3-Methyl-Pentane	0.5	1	ND
Cumene	0.5	1	ND	Methylene-Chloride	0.5	1	ND
Cyclohexane	0.5	1	ND	N,N-Dimethyl-Acetamide	0.5	1	ND
1,2-Dichloro-Ethane	0.5	1	ND	N,N-Dimethyl-Formamide	0.5	1	ND
1,2-Dimethoxy-Ethane	0.5	1	ND	Neopentane	0.5	1	ND
2,2-Dimethyl-Butane	0.5	1	ND	1-Pentanol	0.5	1	ND
2,3-Dimethyl-Butane	0.5	1	ND	Propane	0.5	1	ND
Dimethyl sulfoxide	0.5	1	ND	1-Propanol	0.5	1	ND
1,4-Dioxane	0.5	1	ND	Pyridine	0.5	1	ND
Ethanol	0.5	1	ND	Sulfolane	0.5	1	ND
2-Ethoxy-Ethanol	0.5	1	ND	Tetrahydrofuran	0.5	1	ND
Ethyl-Acetate	0.5	1	ND	Toluene	0.5	1	ND
Ethyl-Benzene	0.5	1	ND	Trichloroethene	0.5	1	ND
Ethyl-Ether	0.5	1	ND	Xylenes	0.5	1	ND
Ethylene glycol	0.5	1	ND	n-Hexane	0.5	1	ND
Ethylene oxide	0.5	1	ND	n-Pentane	0.5	1	429.907

Date Tested: 07/27/2020  
LOD = Limit of Detection  
LOQ = Limit of Quantitation  
ND = None Detected



Heidi Sayre  
Scientist  
07/27/2020

This product or substance has been tested by KCA Laboratories using validated testing methodologies and a quality system. Values reported relate only to the product or substance tested. KCA Laboratories makes no claims as to the efficacy, safety or other risks associated with any detected or non-detected amounts of any substances reported herein. This Certificate of Analysis shall not be reproduced except in full, without the written approval of KCA Laboratories.