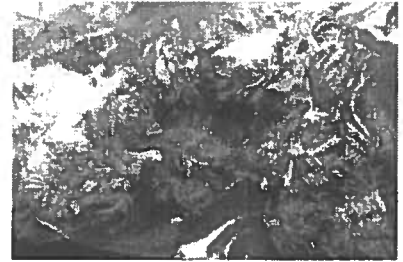


EVIO Labs Medford (pka Kenevir Research)
 540 East Vilas Road, Suite F, Central Point, OR 97502
 541-668-7444 / OLCC 010-1001626980D / www.EVIOLabs.com

Hemp Star
Know Fun Ranch
 Info Only



Confident Cannabis ID: 1910KR0076.4666
Sample ID: M191414-01
Matrix: Hemp
METRC Batch #:
Sampling Method/SOP: SOP.T.20.010
Date Sampled: 10/07/19 09:00
Date Accepted: 10/07/19
Harvest/Process Lot ID:

Batch ID:
Batch Size (g):
Unit for Sale:
Harvest/Production Date:

Cannabinoid Analysis

FOR INFORMATIONAL USE ONLY - NOT FOR REGULATORY PURPOSES

Date/Time Extracted: 10/10/19 12:55

Analysis Method/SOP: SOP.T.40.020

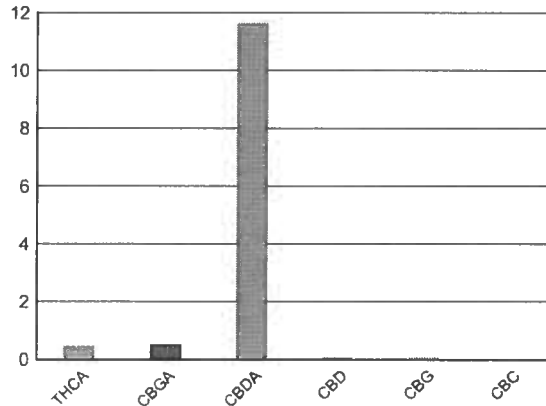
Date/Time Analyzed: 10/11/19 10:51

Cannabinoids	LOQ(%)	mg/g	% weight	
--------------	--------	------	----------	--

Total THC ((THCA*0.877)+Δ9THC)		4.04	0.404
Total CBD ((CBDA*0.877)+CBD)		101.73	10.173

THCA	0.100	4.61	0.461
delta 9-THC	0.100	< LOQ	< LOQ
CBGA	0.100	5.08	0.508
CBDA	0.100	116.00	11.6
CBD	0.100	< LOQ	< LOQ
CBDV	0.100	< LOQ	< LOQ
CBN	0.100	< LOQ	< LOQ
CBG	0.100	< LOQ	< LOQ
CBC	0.100	< LOQ	< LOQ
CBDV-A	0.100	3.26	0.326
Sum of tested Cannabinoids	0.100	129.00	12.9

Cannabinoid Profile



"Total THC" and "Total CBD" are calculated values and are an Oregon reporting requirement (OAR 333-064-0100). For Cannabinoid analysis, only delta 9-THC, THCA, CBD, CBDA are ORELAP accredited analytes. Cannabinoid values reported for plant matter are dry weight corrected; Oregon Water Activity action level is 0.65Aw and Oregon Moisture Content action level is 15%. Samples above limit will be highlighted RED; FD = Field Duplicate; LOQ = Limit of Quantitation.

Stephanie Moon
 Laboratory Director - 10/16/2019

EVIO Labs Medford (pka Kenevir Research)
 540 East Vilas Road, Suite F, Central Point, OR 97502
 541-668-7444 / OLCC 010-1001626980D / www.EVIOLabs.com

FOR INFORMATIONAL USE ONLY - NOT FOR REGULATORY PURPOSES

Hemp Star

Know Fun Ranch

Info Only

Sample ID: M191414-01 METRC Batch #:

Matrix: Hemp

Date Sampled: 10/07/19 09:00

Date Accepted: 10/07/19

Batch ID:

Batch Size:

Sampling Method/SOP: SOP.T.20.010

Terpene Analysis

Date/Time Extracted: 10/14/19 13:55

Analysis Method/SOP: SOP.T.40.092

Date/Time Analyzed: 10/16/19 13:49

Analyte	LOQ (mg/g)	Mass (mg/g)	Mass (%)	Analyte	LOQ (mg/g)	Mass (mg/g)	Mass (%)
alpha-Pinene	0.200	0.208	0.0208	beta-Pinene	0.200	0.323	0.0323
Camphene	0.200	< LOQ	< LOQ	Sabinene	0.200	< LOQ	< LOQ
Sabinene hydrate	0.200	< LOQ	< LOQ	beta-Myrcene	0.200	3.55	0.355
p-Mentha-1,5-diene	0.200	< LOQ	< LOQ	(+)-3-Carene	0.200	< LOQ	< LOQ
alpha-Terpinene	0.200	< LOQ	< LOQ	gamma-Terpinene	0.200	< LOQ	< LOQ
Limonene	0.200	0.690	0.069	Eucalyptol	0.200	< LOQ	< LOQ
Guaiol	0.200	< LOQ	< LOQ	Terpinolene	0.200	3.74	0.374
Linalool	0.200	< LOQ	< LOQ	Camphor	0.200	< LOQ	< LOQ
(+)-Camphor	0.200	< LOQ	< LOQ	(-)-Camphor	0.200	< LOQ	< LOQ
Isopulegol	0.200	< LOQ	< LOQ	Isoborneol	0.200	< LOQ	< LOQ
Borneol	0.200	< LOQ	< LOQ	Hexahydrothymol	0.200	0.472	0.0472
Geraniol	0.200	< LOQ	< LOQ	(+)-Pulegone	0.200	< LOQ	< LOQ
Nerol	0.200	< LOQ	< LOQ	cis-Nerolidol	0.200	< LOQ	< LOQ
trans-Nerolidol	0.200	< LOQ	< LOQ	Geranyl acetate	0.200	< LOQ	< LOQ
alpha-Cedrene	0.200	< LOQ	< LOQ	trans-Caryophyllene	0.200	1.09	0.109
Caryophyllene Oxide	0.200	< LOQ	< LOQ	alpha-Humulene	0.200	0.527	0.0527
Valencene	0.200	< LOQ	< LOQ	alpha-Farnesene	0.200	1.39	0.139
beta-Farnesene	0.200	< LOQ	< LOQ	Cedrol	0.200	< LOQ	< LOQ
alpha-Bisabolol	0.200	0.729	0.0729	Fenchone	0.200	< LOQ	< LOQ
Fenchyl Alcohol	0.200	< LOQ	< LOQ	trans, beta- Ocimene	0.200	1.98	0.198
beta, cis- Ocimene	0.200	1.98	0.198	Terpineol	0.200	< LOQ	< LOQ
Total (Sum):						16.68	1.67

Analysis performed on GCMS with confirmation ion identification. Terpene analysis is not ORELAP accredited. Results reported as dry weight. LOQ = Limit of Quantitation ;Terpene analysis performed in conjunction with EVIO Labs Portland.



Stephanie Moon
 Laboratory Director - 10/16/2019

EVIO Labs Medford (pka Kenevir Research)
 540 East Vilas Road, Suite F, Central Point, OR 97502
 541-668-7444 / OLCC 010-1001626980D / www.EVIOLabs.com

FOR INFORMATIONAL USE ONLY - NOT FOR REGULATORY PURPOSES

Hemp Star

Know Fun Ranch

Info Only

Sample ID: M191414-01

METRC Batch #:

Matrix: Hemp

Date Sampled: 10/07/19 09:00

Date Accepted: 10/07/19

Batch ID:

Batch Size:

Sampling Method/SOP: SOP.T.20.010

Pesticides

Date/Time Extracted: 10/10/19 15:16

Date/Time Analyzed: 10/11/2019 6:14:26AM

Analysis Method/SOP: SOP.T.40.050 / SOP.T.40.051

Analyte	LOQ	Action Level	Result	Units	Type
Abamectin	0.250	0.5	< LOQ	ppm	
Acephate	0.200	0.4	< LOQ	ppm	Organophosphate insecticide
Acequinocyl	1.00	2	< LOQ	ppm	
Acetamiprid	0.200	0.2	< LOQ	ppm	Neonicotinoid insecticide
Aldicarb	0.200	0.4	< LOQ	ppm	Carbamate insecticide
Azoxystrobin	0.200	0.2	< LOQ	ppm	
Bifenazate	0.200	0.2	< LOQ	ppm	Unclassified insecticide
Bifenthrin	0.200	0.2	< LOQ	ppm	
Boscalid	0.200	0.4	< LOQ	ppm	Anilide fungicide
Carbaryl	0.200	0.2	< LOQ	ppm	Carbamate insecticide
Carbofuran	0.200	0.2	< LOQ	ppm	Carbamate insecticide
Chlorantraniliprole	0.200	0.2	< LOQ	ppm	Anthranilic diamide insecticide
Chlorfenapyr	0.500	1	< LOQ	ppm	Pyrazole insecticide
Chlorpyrifos	0.200	0.2	< LOQ	ppm	Organophosphate insecticide
Clofentezine	0.200	0.2	< LOQ	ppm	
Cyfluthrin	0.500	1	< LOQ	ppm	
Cypermethrin	0.500	1	< LOQ	ppm	
Daminozide	0.500	1	< LOQ	ppm	
DDVP (Dichlorvos)	0.500	1	< LOQ	ppm	
Diazinon	0.200	0.2	< LOQ	ppm	Organophosphate insecticide
Dimethoate	0.200	0.2	< LOQ	ppm	
Ethoprophos	0.200	0.2	< LOQ	ppm	
Etofenprox	0.200	0.4	< LOQ	ppm	
Etoxazole	0.200	0.2	< LOQ	ppm	Unclassified miticide
Fenoxycarb	0.200	0.2	< LOQ	ppm	
Fenpyroximate	0.200	0.4	< LOQ	ppm	
Fipronil	0.200	0.4	< LOQ	ppm	Pyrazole insecticide
Flonicamid	0.500	1	< LOQ	ppm	Pyridinecarboxamide insecticide
Fludioxonil	0.200	0.4	< LOQ	ppm	non-systemic fungicide
Hexythiazox	0.500	1	< LOQ	ppm	
Imazalil	0.200	0.2	< LOQ	ppm	Azole fungicide
Imidacloprid	0.200	0.4	< LOQ	ppm	Neonicotinoid insecticide
Kresoxim-methyl	0.200	0.4	< LOQ	ppm	
Malathion	0.200	0.2	< LOQ	ppm	
Metalaxyl	0.200	0.2	< LOQ	ppm	
Methiocarb	0.200	0.2	< LOQ	ppm	Carbamate insecticide



Stephanie Moon
 Laboratory Director - 10/16/2019

EVIO Labs Medford (pka Kenevir Research)
540 East Vilas Road, Suite F, Central Point, OR 97502
541-668-7444 / OLCC 010-1001626980D / www.EVIOLabs.com

FOR INFORMATIONAL USE ONLY - NOT FOR REGULATORY PURPOSES

Hemp Star

Know Fun Ranch

Info Only

Sample ID: M191414-01

METRC Batch #:

Matrix: Hemp

Date Sampled: 10/07/19 09:00

Date Accepted: 10/07/19

Batch ID:

Batch Size:

Sampling Method/SOP: SOP.T.20.010

Pesticides

Date/Time Extracted: 10/10/19 15:16

Date/Time Analyzed: 10/11/2019 6:14:26AM

Analysis Method/SOP: SOP.T.40.050 / SOP.T.40.051

Analyte	LOQ	Action Level	Result	Units	Type
Methomyl	0.200	0.4	< LOQ	ppm	Carbamate insecticide
Methyl parathion	0.200	0.2	< LOQ	ppm	
MGK-264	0.200	0.2	< LOQ	ppm	
Myclobutanil	0.200	0.2	< LOQ	ppm	Azole fungicide
Naled	0.250	0.5	< LOQ	ppm	
Oxamyl	0.500	1	< LOQ	ppm	Carbamate insecticide
Paclobutrazol	0.200	0.4	< LOQ	ppm	Azole plant growth regulator
Permethrins	0.200	0.2	< LOQ	ppm	
Phosmet	0.200	0.2	< LOQ	ppm	Organophosphate insecticide
Piperonyl butoxide	1.00	2	< LOQ	ppm	
Prallethrin	0.200	0.2	< LOQ	ppm	
Propiconazole	0.200	0.4	< LOQ	ppm	
Propoxur	0.200	0.2	< LOQ	ppm	Carbamate insecticide
Pyrethrins	0.500	1	< LOQ	ppm	
Pyridaben	0.200	0.2	< LOQ	ppm	Unclassified insecticide
Spinosad	0.200	0.2	< LOQ	ppm	Spinosyn insecticide
Spiromesifen	0.200	0.2	< LOQ	ppm	Keto-enol insecticide
Spirotetramat	0.200	0.2	< LOQ	ppm	Keto-enol insecticide
Spiroxamine	0.200	0.4	< LOQ	ppm	Unclassified fungicide
Tebuconazole	0.200	0.4	< LOQ	ppm	
Thiacloprid	0.200	0.2	< LOQ	ppm	
Thiamethoxam	0.200	0.2	< LOQ	ppm	Neonicotinoid insectide
Trifloxystrobin	0.200	0.2	< LOQ	ppm	Strobin fungicide

Results above the action level fail Oregon state testing requirements and will be highlighted RED.

LOQ= Limit of Quantitation; PPM= Parts per million; ND= Not detected; NT= Not tested; AC= Above calibration range. PASS/FAIL status based on OAR 333-007.



Stephanie Moon
 Laboratory Director - 10/16/2019

EVIO Labs Medford (pka Kenevir Research)
 540 East Vilas Road, Suite F, Central Point, OR 97502
 541-668-7444 / OLCC 010-1001626980D / www.EVIO Labs.com

Quality Control

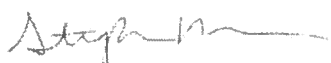
Batch: M19J068 - ODA Exhibit B/ SOP.T.30.050 Prep for Cannabinoids

Blank(M19J068-BLK1)			Extracted: 10/10/19 12:55		Analyzed: 10/11/19 05:58		
Analyte	Result	LOQ	Recovery Limits	Analyte	Result	LOQ	Recovery Limits
THCA	< LOQ	0.100 (%)	< LOQ	delta 9-THC	< LOQ	0.100 (%)	< LOQ
CBDA	< LOQ	0.100 (%)	< LOQ	CBD	< LOQ	0.100 (%)	< LOQ
CBDV-A	< LOQ	0.100 (%)	< LOQ	CBDV	< LOQ	0.100 (%)	< LOQ
CBG	< LOQ	0.100 (%)	< LOQ	CBGA	< LOQ	0.100 (%)	< LOQ
CBN	< LOQ	0.100 (%)	< LOQ	CBC	< LOQ	0.100 (%)	< LOQ
Sum of tested Cannabinoid:	< LOQ	0.100 (%)	< LOQ				

LCS(M19J068-BS1)			Extracted: 10/10/19 12:55		Analyzed: 10/11/19 06:11		
Analyte	% Recovery	LOQ	Recovery Limits	Analyte	% Recovery	LOQ	Recovery Limits
THCA	83.9	(%)	70-130	delta 9-THC	97.7	(%)	70-130
CBDA	87.7	(%)	70-130	CBD	94.3	(%)	70-130

Batch: M19J072 - SOP.T.30.060 Pesticide Prep

Blank(M19J072-BLK1)			Extracted: 10/10/19 15:16		Analyzed: 10/14/19 13:32		
Analyte	Result	LOQ	Recovery Limits	Analyte	Result	LOQ	Recovery Limits
Cyfluthrin	< LOQ	0.500 (ppm)	< LOQ	Cypermethrin	< LOQ	0.500 (ppm)	< LOQ
MGK-264	< LOQ	0.200 (ppm)	< LOQ	Chlorfenapyr	< LOQ	0.500 (ppm)	< LOQ
Methyl parathion	< LOQ	0.200 (ppm)	< LOQ	Acequinocyl	< LOQ	1.00 (ppm)	< LOQ
Bifenthrin	< LOQ	0.200 (ppm)	< LOQ	Acephate	< LOQ	0.200 (ppm)	< LOQ
Abamectin	< LOQ	0.250 (ppm)	< LOQ	Acetamiprid	< LOQ	0.200 (ppm)	< LOQ
Aldicarb	< LOQ	0.200 (ppm)	< LOQ	Azoxystrobin	< LOQ	0.200 (ppm)	< LOQ
Bifenazate	< LOQ	0.200 (ppm)	< LOQ	Boscalid	< LOQ	0.200 (ppm)	< LOQ
Carbaryl	< LOQ	0.200 (ppm)	< LOQ	Carbofuran	< LOQ	0.200 (ppm)	< LOQ
Chlorantraniliprole	< LOQ	0.200 (ppm)	< LOQ	Chlorpyrifos	< LOQ	0.200 (ppm)	< LOQ
Clofentezine	< LOQ	0.200 (ppm)	< LOQ	Daminozide	< LOQ	0.500 (ppm)	< LOQ
DDVP (Dichlorvos)	< LOQ	0.500 (ppm)	< LOQ	Diazinon	< LOQ	0.200 (ppm)	< LOQ
Dimethoate	< LOQ	0.200 (ppm)	< LOQ	Ethoprophos	< LOQ	0.200 (ppm)	< LOQ
Etofenprox	< LOQ	0.200 (ppm)	< LOQ	Etoxazole	< LOQ	0.200 (ppm)	< LOQ
Fenoxycarb	< LOQ	0.200 (ppm)	< LOQ	Fenpyroximate	< LOQ	0.200 (ppm)	< LOQ
Fipronil	< LOQ	0.200 (ppm)	< LOQ	Flonicamid	< LOQ	0.500 (ppm)	< LOQ
Fludioxonil	< LOQ	0.200 (ppm)	< LOQ	Hexythiazox	< LOQ	0.500 (ppm)	< LOQ
Imazalil	< LOQ	0.200 (ppm)	< LOQ	Imidacloprid	< LOQ	0.200 (ppm)	< LOQ
Kresoxim-methyl	< LOQ	0.200 (ppm)	< LOQ	Malathion	< LOQ	0.200 (ppm)	< LOQ
Metalaxyl	< LOQ	0.200 (ppm)	< LOQ	Methiocarb	< LOQ	0.200 (ppm)	< LOQ
Methomyl	< LOQ	0.200 (ppm)	< LOQ	Myclobutanil	< LOQ	0.200 (ppm)	< LOQ
Naled	< LOQ	0.250 (ppm)	< LOQ	Oxamyl	< LOQ	0.500 (ppm)	< LOQ
Paclbutrazol	< LOQ	0.200 (ppm)	< LOQ	Permethrins	< LOQ	0.200 (ppm)	< LOQ



Stephanie Moon
 Laboratory Director - 10/16/2019

EVIO Labs Medford (pka Kenevir Research)
540 East Vilas Road, Suite F, Central Point, OR 97502
541-668-7444 / OLCC 010-1001626980D / www.EVIOLabs.com

Quality Control

Batch: M19J072 - SOP.T.30.060 Pesticide Prep (Continued)

Blank(M19J072-BLK1)				Extracted: 10/10/19 15:16		Analyzed: 10/10/19 20:02	
Analyte	Result	LOQ	Recovery Limits	Analyte	Result	LOQ	Recovery Limits
Phosmet	< LOQ	0.200 (ppm)	< LOQ	Piperonyl butoxide	< LOQ	1.00 (ppm)	< LOQ
Prallethrin	< LOQ	0.200 (ppm)	< LOQ	Propiconazole	< LOQ	0.200 (ppm)	< LOQ
Propoxur	< LOQ	0.200 (ppm)	< LOQ	Pyrethrins	< LOQ	0.500 (ppm)	< LOQ
Pyridaben	< LOQ	0.200 (ppm)	< LOQ	Spinosad	< LOQ	0.200 (ppm)	< LOQ
Spiromesifen	< LOQ	0.200 (ppm)	< LOQ	Spirotetramat	< LOQ	0.200 (ppm)	< LOQ
Spiroxamine	< LOQ	0.200 (ppm)	< LOQ	Tebuconazole	< LOQ	0.200 (ppm)	< LOQ
Thiacloprid	< LOQ	0.200 (ppm)	< LOQ	Thiamethoxam	< LOQ	0.200 (ppm)	< LOQ
Trifloxystrobin	< LOQ	0.200 (ppm)	< LOQ				

Batch: P19J095 - SOP.T.40.092 PDX Terpenoid Analysis via HS-GC-MS

Blank(P19J095-BLK1)				Extracted: 10/14/19 13:55		Analyzed: 10/16/19 11:52	
Analyte	Result	LOQ	Recovery Limits	Analyte	Result	LOQ	Recovery Limits
alpha-Pinene	< LOQ	0.200 (mg/g)	< LOQ	beta-Pinene	< LOQ	0.200 (mg/g)	< LOQ
Camphene	< LOQ	0.200 (mg/g)	< LOQ	Sabinene	< LOQ	0.200 (mg/g)	< LOQ
Sabinene hydrate	< LOQ	0.200 (mg/g)	< LOQ	beta-Myrcene	< LOQ	0.200 (mg/g)	< LOQ
p-Mentha-1,5-diene	< LOQ	0.200 (mg/g)	< LOQ	(+)-3-Carene	< LOQ	0.200 (mg/g)	< LOQ
alpha-Terpinene	< LOQ	0.200 (mg/g)	< LOQ	gamma-Terpinene	< LOQ	0.200 (mg/g)	< LOQ
Limonene	< LOQ	0.200 (mg/g)	< LOQ	Eucalyptol	< LOQ	0.200 (mg/g)	< LOQ
Guaiol	< LOQ	0.200 (mg/g)	< LOQ	Terpinolene	< LOQ	0.200 (mg/g)	< LOQ
Linalool	< LOQ	0.200 (mg/g)	< LOQ	Camphor	< LOQ	0.200 (mg/g)	< LOQ
(+)-Camphor	< LOQ	0.200 (mg/g)	< LOQ	(-)-Camphor	< LOQ	0.200 (mg/g)	< LOQ
Isopulegol	< LOQ	0.200 (mg/g)	< LOQ	Isoborneol	< LOQ	0.200 (mg/g)	< LOQ
Borneol	< LOQ	0.200 (mg/g)	< LOQ	Hexahydrothymol	< LOQ	0.200 (mg/g)	< LOQ
Geraniol	< LOQ	0.200 (mg/g)	< LOQ	(+)-Pulegone	< LOQ	0.200 (mg/g)	< LOQ
Nerol	< LOQ	0.200 (mg/g)	< LOQ	cis-Nerolidol	< LOQ	0.200 (mg/g)	< LOQ
trans-Nerolidol	< LOQ	0.200 (mg/g)	< LOQ	Geranyl acetate	< LOQ	0.200 (mg/g)	< LOQ
alpha-Cedrene	< LOQ	0.200 (mg/g)	< LOQ	trans-Caryophyllene	< LOQ	0.200 (mg/g)	< LOQ
Caryophyllene Oxide	< LOQ	0.200 (mg/g)	< LOQ	alpha-Humulene	< LOQ	0.200 (mg/g)	< LOQ
Valencene	< LOQ	0.200 (mg/g)	< LOQ	alpha-Farnesene	< LOQ	0.200 (mg/g)	< LOQ
beta-Farnesene	< LOQ	0.200 (mg/g)	< LOQ	Cedrol	< LOQ	0.200 (mg/g)	< LOQ
alpha-Bisabolol	< LOQ	0.200 (mg/g)	< LOQ	Fenchone	< LOQ	0.200 (mg/g)	< LOQ
Fenchyl Alcohol	< LOQ	0.200 (mg/g)	< LOQ	trans, beta- Ocimene	< LOQ	0.200 (mg/g)	< LOQ
beta, cis- Ocimene	< LOQ	0.200 (mg/g)	< LOQ	Terpineol	< LOQ	0.200 (mg/g)	< LOQ



Stephanie Moon
Laboratory Director - 10/16/2019