

9THCP-021522

 Sample ID: SA-220215-7284
 Batch:
 Type: In-Process Materials
 Matrix: Concentrate - Distillate

 Received: 02/15/2022
 Completed: 02/24/2022

Client
 MC Nutraceuticals
 6101 Long Prairie Rd, Ste 144 LB 17
 Flower Mound, TX 75028
 USA

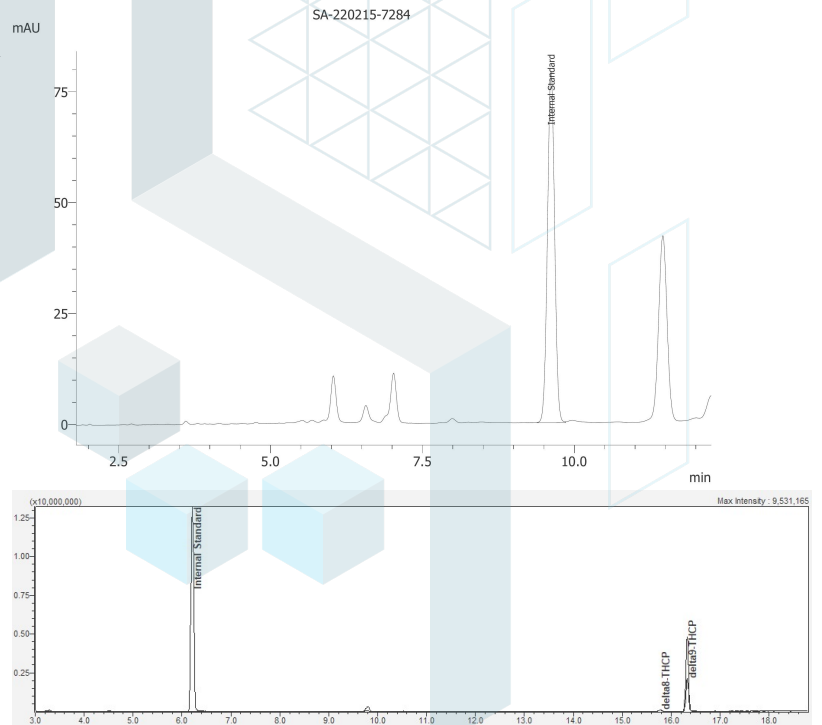
Summary

Test	Date Tested	Status
Cannabinoids	02/23/2022	Tested
Cannabinoids (Additional)	02/23/2022	Tested
Heavy Metals	02/24/2022	Tested

Cannabinoids by HPLC-PDA, LC-MS/MS, and/or GC-MS/MS

ND	ND	ND	Not Tested	Not Tested	Yes
Total Δ9-THC	Total CBD	Total Cannabinoids	Moisture Content	Foreign Matter	Internal Standard Normalization

Analyte	LOD (%)	LOQ (%)	Result (%)	Result (mg/g)	mAU
CBC	0.0095	0.0284	ND	ND	
CBCA	0.0181	0.0543	ND	ND	
CBCV	0.006	0.018	ND	ND	
CBD	0.0081	0.0242	ND	ND	
CBDA	0.0043	0.013	ND	ND	
CBDV	0.0061	0.0182	ND	ND	
CBDVA	0.0021	0.0063	ND	ND	
CBG	0.0057	0.0172	ND	ND	
CBGA	0.0049	0.0147	ND	ND	
CBL	0.0112	0.0335	ND	ND	
CBLA	0.0124	0.0371	ND	ND	
CBN	0.0056	0.0169	ND	ND	
CBNA	0.006	0.0181	ND	ND	
Δ8-THC	0.0104	0.0312	ND	ND	
Δ9-THC	0.0076	0.0227	ND	ND	
Δ9-THCA	0.0084	0.0251	ND	ND	
Δ9-THCV	0.0069	0.0206	ND	ND	
Δ9-THCVA	0.0062	0.0186	ND	ND	
Total Δ9-THC			ND	ND	
Total CBD			ND	ND	
Total			ND	ND	

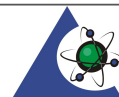


ND = Not Detected; NT = Not Tested; LOD = Limit of Detection; LOQ = Limit of Quantitation; RL = Reporting Limit; Δ = Delta; Total Δ9-THC = Δ9-THCA * 0.877 + Δ9-THC; Total CBD = CBDA * 0.877 + CBD;



 Generated By: Alex Morris
 Quality Assurance Manager
 Date: 02/24/2022



 Tested By: Scott Caudill
 Senior Scientist
 Date: 02/23/2022

 ISO/IEC 17025:2017 Accredited
 Accreditation #108651


9THCP-021522

 Sample ID: SA-220215-7284
 Batch:
 Type: In-Process Materials
 Matrix: Concentrate - Distillate

 Received: 02/15/2022
 Completed: 02/24/2022

Client

 MC Nutraceuticals
 6101 Long Prairie Rd, Ste 144 LB 17
 Flower Mound, TX 75028
 USA

Cannabinoids by HPLC-PDA, LC-MS/MS, and/or GC-MS/MS

Analyte	LOD (%)	LOQ (%)	Result (%)	Result (mg/g)
Δ8-THCP			2.13	21.3
Δ9-THCP			78.6	786
Total Additional Cannabinoids			80.8	808
Total			80.8	808

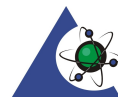
ND = Not Detected; NT = Not Tested; LOD = Limit of Detection; LOQ = Limit of Quantitation; RL = Reporting Limit; Δ = Delta; Total Δ9-THC = Δ9-THCA * 0.877 + Δ9-THC; Total CBD = CBDA * 0.877 + CBD;



 Generated By: Alex Morris
 Quality Assurance Manager
 Date: 02/24/2022



 Tested By: Scott Caudill
 Senior Scientist
 Date: 02/23/2022

 ISO/IEC 17025:2017 Accredited
 Accreditation #108651




KCA Laboratories
 232 North Plaza Drive
 Nicholasville, KY 40356

+1-833-KCA-LABS
<https://kcalabs.com>
 KDA Lic.# P_0058

9THCP-021522

Sample ID: SA-220215-7284
 Batch:
 Type: In-Process Materials
 Matrix: Concentrate - Distillate

Received: 02/15/2022
 Completed: 02/24/2022

Client
 MC Nutraceuticals
 6101 Long Prairie Rd, Ste 144 LB 17
 Flower Mound, TX 75028
 USA

Heavy Metals by ICP-MS

Analyte	LOD (ppb)	LOQ (ppb)	Result (ppb)
Arsenic	2	20	ND
Cadmium	1	20	ND
Lead	2	20	<RL
Mercury	12	50	ND

ND = Not Detected; NT = Not Tested; LOD = Limit of Detection; LOQ = Limit of Quantitation; P = Pass; F = Fail; RL = Reporting Limit

Generated By: Alex Morris
 Quality Assurance Manager
 Date: 02/24/2022

Tested By: Nicholas Howard
 Scientist
 Date: 02/24/2022



9THCP-021522Sample ID: SA-220215-7284
Batch:
Type: In-Process Materials
Matrix: Concentrate - DistillateReceived: 02/15/2022
Completed: 02/24/2022**Client**MC Nutraceuticals
6101 Long Prairie Rd, Ste 144 LB 17
Flower Mound, TX 75028
USA**Reporting Limit Appendix****Heavy Metals - Colorado CDPHE**

Analyte	Limit (ppb)	Analyte	Limit (ppb)
Arsenic	1500	Lead	500
Cadmium	500	Mercury	1500

