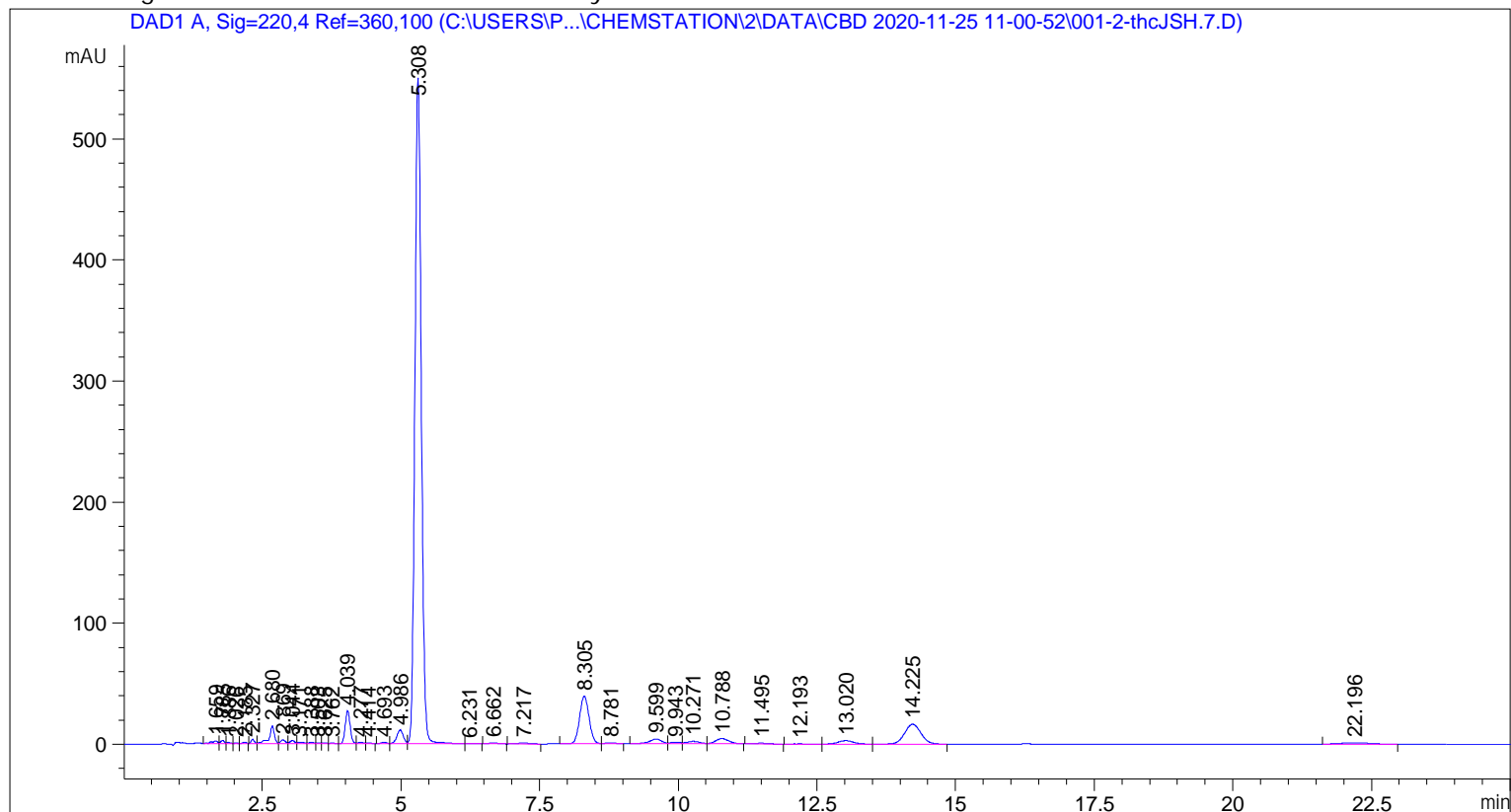


```

=====
Acq. Operator   : SYSTEM                               Seq. Line :    1
Sample Operator : SYSTEM
Acq. Instrument : 1100 LC                               Location  :    2
Injection Date  : 11/25/2020 11:03:30 AM              Inj       :    1
                                                    Inj Volume: 5.000 µl

Acq. Method     : C:\Users\Public\Documents\ChemStation\2\Data\CBD 2020-11-25 11-00-52\CBD.M
Last changed    : 5/18/2020 9:15:46 AM by SYSTEM
Analysis Method : C:\Users\Public\Documents\ChemStation\2\Methods\CBD.M
Last changed    : 12/3/2020 7:22:58 AM by SYSTEM
=====
  
```



=====
 Area Percent Report
 =====

```

Sorted By      :      Signal
Multiplier     :      1.0000
Dilution      :      1.0000
Use Multiplier & Dilution Factor with ISTDs
  
```

Signal 1: DAD1 A, Sig=220, 4 Ref=360, 100

Peak #	RetTime [min]	Type	Width [min]	Area [mAU*s]	Height [mAU]	Area %
1	1.659	BH	0.1119	15.25807	1.93685	0.2547
2	1.785	HH	0.0720	11.59032	2.60270	0.1934
3	1.886	HB	0.0810	3.74853	7.67210e-1	0.0626
4	2.026	HH	0.0534	1.44018	4.49328e-1	0.0240
5	2.185	HH	0.0644	4.71533	1.13699	0.0787
6	2.327	BH	0.0633	14.23635	3.51185	0.2376
7	2.680	HH	0.0910	93.92934	14.61674	1.5677
8	2.869	HH	0.0937	17.99847	3.01362	0.3004

Sample Name: thcJSH.7

Peak #	RetTime [min]	Type	Width [min]	Area [mAU*s]	Height [mAU]	Area %
9	3.044	HH	0.0916	14.66308	2.52896	0.2447
10	3.171	HH	0.1084	9.36319	1.23573	0.1563
11	3.388	HH	0.0963	7.15083	1.09361	0.1193
12	3.503	HH	0.0757	3.42477	6.69118e-1	0.0572
13	3.625	HH	0.0788	2.60264	4.83164e-1	0.0434
14	3.762	HB	0.0830	2.43427	4.50956e-1	0.0406
15	4.039	BH	0.0966	168.29915	27.06083	2.8089
16	4.277	HH	0.1039	8.28455	1.20897	0.1383
17	4.414	HB	0.0964	4.17917	6.73129e-1	0.0698
18	4.693	BH	0.1113	8.27084	1.15885	0.1380
19	4.986	HH	0.1282	93.25136	11.30335	1.5564
20	5.308	HH	0.1256	4404.52490	549.06946	73.5119
21	6.231	HB	0.1336	1.45413	1.44275e-1	0.0243
22	6.662	HB	0.1719	7.87181	7.18302e-1	0.1314
23	7.217	HB	0.2256	11.34651	7.62562e-1	0.1894
24	8.305	BH	0.1864	465.42252	39.22813	7.7679
25	8.781	HB	0.1821	9.33453	8.12290e-1	0.1558
26	9.599	BH	0.2298	58.56806	3.84310	0.9775
27	9.943	HH	0.1874	13.07537	1.03467	0.2182
28	10.271	HH	0.2380	28.01225	1.79517	0.4675
29	10.788	HB	0.2529	68.70689	4.24433	1.1467
30	11.495	HB	0.2320	9.32760	6.04653e-1	0.1557
31	12.193	BH	0.2684	2.35772	1.10730e-1	0.0394
32	13.020	BB	0.2965	52.29092	2.76638	0.8727
33	14.225	HH	0.3234	337.33224	16.44207	5.6301
34	22.196	BB	0.4978	37.11529	1.14629	0.6195

Totals : 5991.58119 698.62439

=====
*** End of Report ***