



PURTEC

Creating the Global Standard
in Emission Tested Hardware



PURTEC

THE COMPANY

TECHNOLOGY

STANDARDS

PRODUCTS

OEM/ODM

INTEGRATION

VISION

To create the highest standards for consumer safety in the regulated cannabis and CBD markets. To engineer the safest delivery systems using the highest quality raw materials.

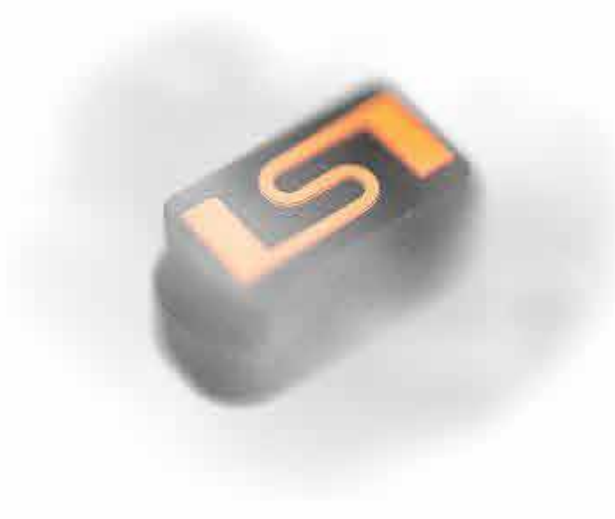
OUR MISSION

To design, engineer, and manufacturer cannabis and CBD delivery systems that are safe for the consumer, superior engineering, optimal user-experience, and value for the brands

The logo for Purtec, featuring a stylized 'P' icon in teal and grey to the left of the word 'PURTEC' in a bold, dark grey sans-serif font. A teal horizontal line is positioned beneath the 'URTEC' portion of the text.

PURTEC





Exposure to Different Forms of Nickel and Risk of Lung Cancer FREE

Tom K. Grimsrud, Steinar D. Berger, Tor Halvorsen, Asgeir Andersen

American Journal of

1132, <https://doi.org/10.1093/ajph/108.7.1132>

Published: 15 Dec 2018

(HAZEMMKAMAL/ISTOCK)

[Smoking Cessation](#) > [News](#) >

Toxic Metals Found in E-Cigarette Vapor



FROM THE WEBMD ARCHIVES i

By Alan Mozes

HealthDay Reporter

MONDAY, Feb. 26, 2018 (HealthDay News) -- If you think that "vaping" is a safe alternative to [smoking](#), new research suggests you might be inadvertently inhaling unsafe levels of toxic metals.

HEALTH

Toxic Heavy Metals Are Leaking From E-Cigarettes Into The Vapours, Study Shows

MIKE MCRAE 23 FEB 2018

They've been touted as a slightly healthier alternative to puffing on tobacco.

[Only a few weeks ago](#), UK health bodies suggested electronic cigarettes should be in hospital shops to encourage smokers to wean themselves off their habit.

Respiratory health effects of long-term exposure to different chromium species in stainless steel production FREE

M. Huvinen ✉, J. Uitti, P. Oksa, P. Palmroos, P. Laippala

Occupational Medicine, Volume 52, Issue 4, June 2002, Pages 203-212, <https://doi.org/10.1093/occmed/52.4.203>

Published: 01 June 2002 [Article history](#) ▼

The Science

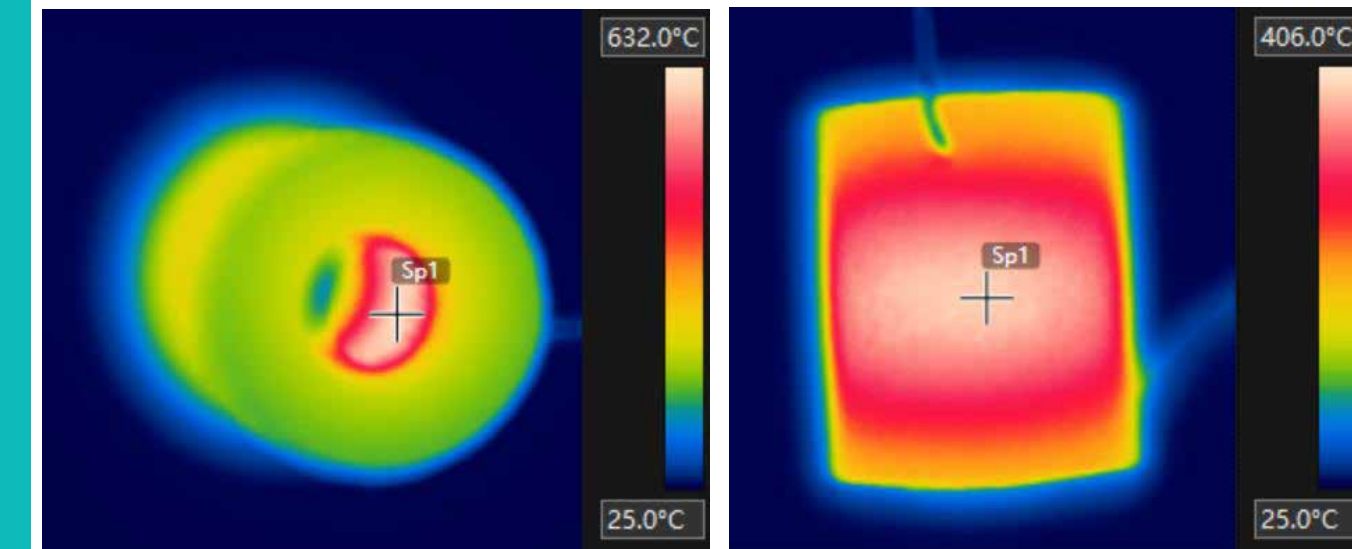
PurTec



PurTec



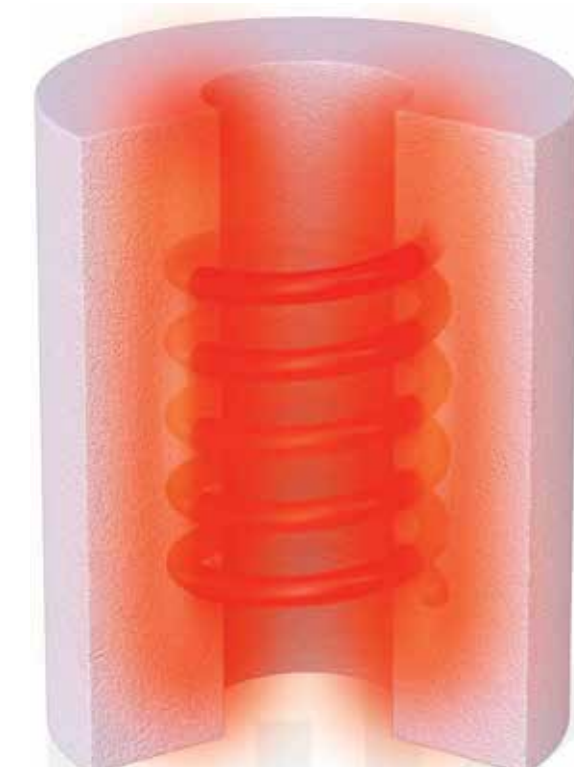
PurTec



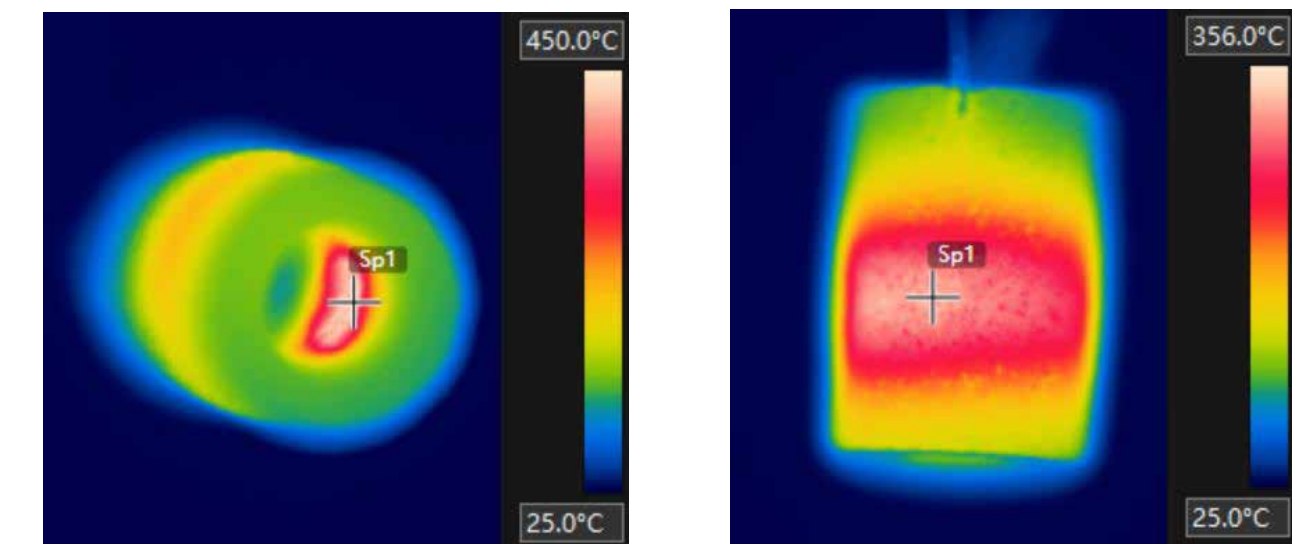
Biggest Competitor



Biggest Competitor



Biggest Competitor

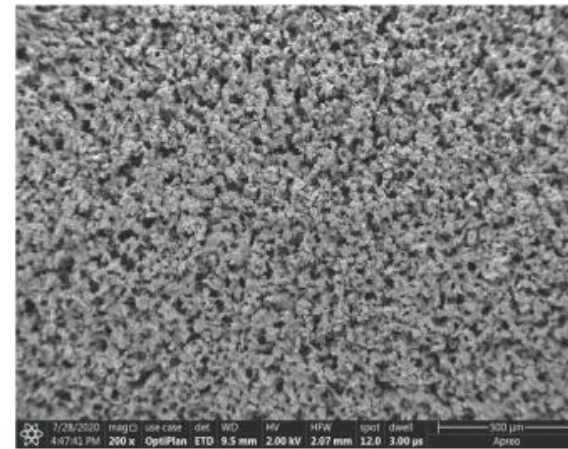


Third Party Analysis

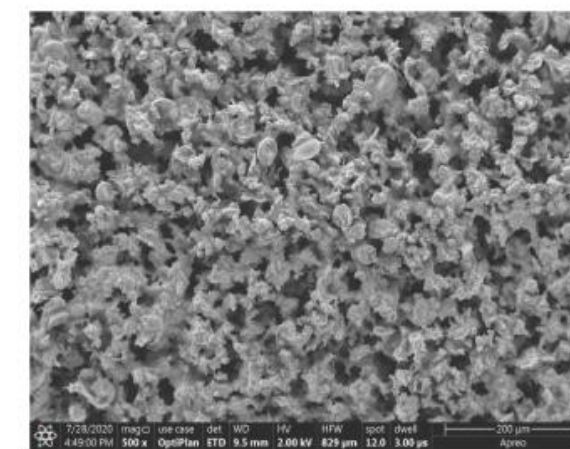
Quality First

PurTec Ceramic

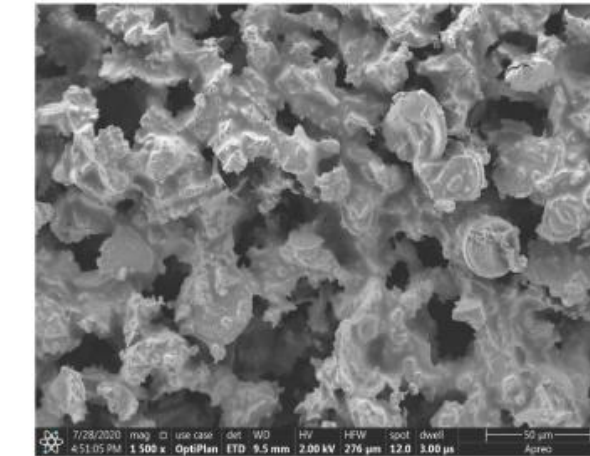
500X



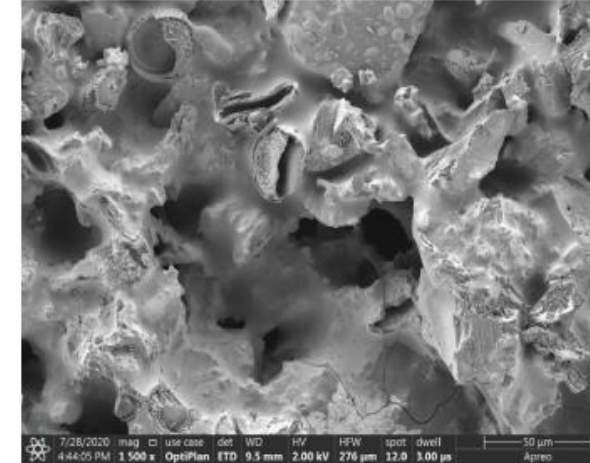
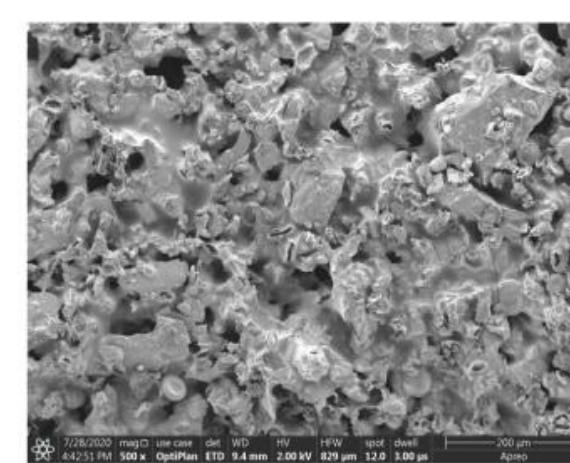
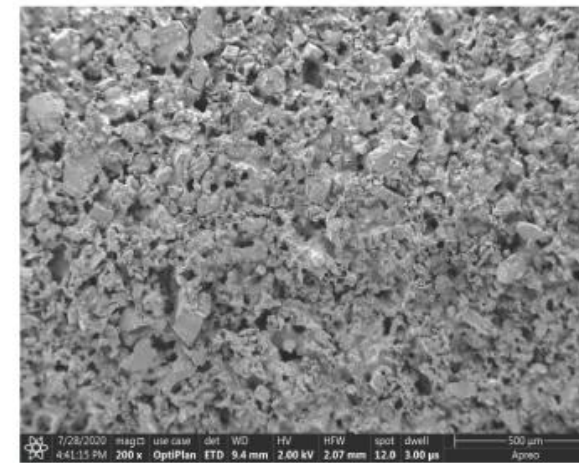
2000X



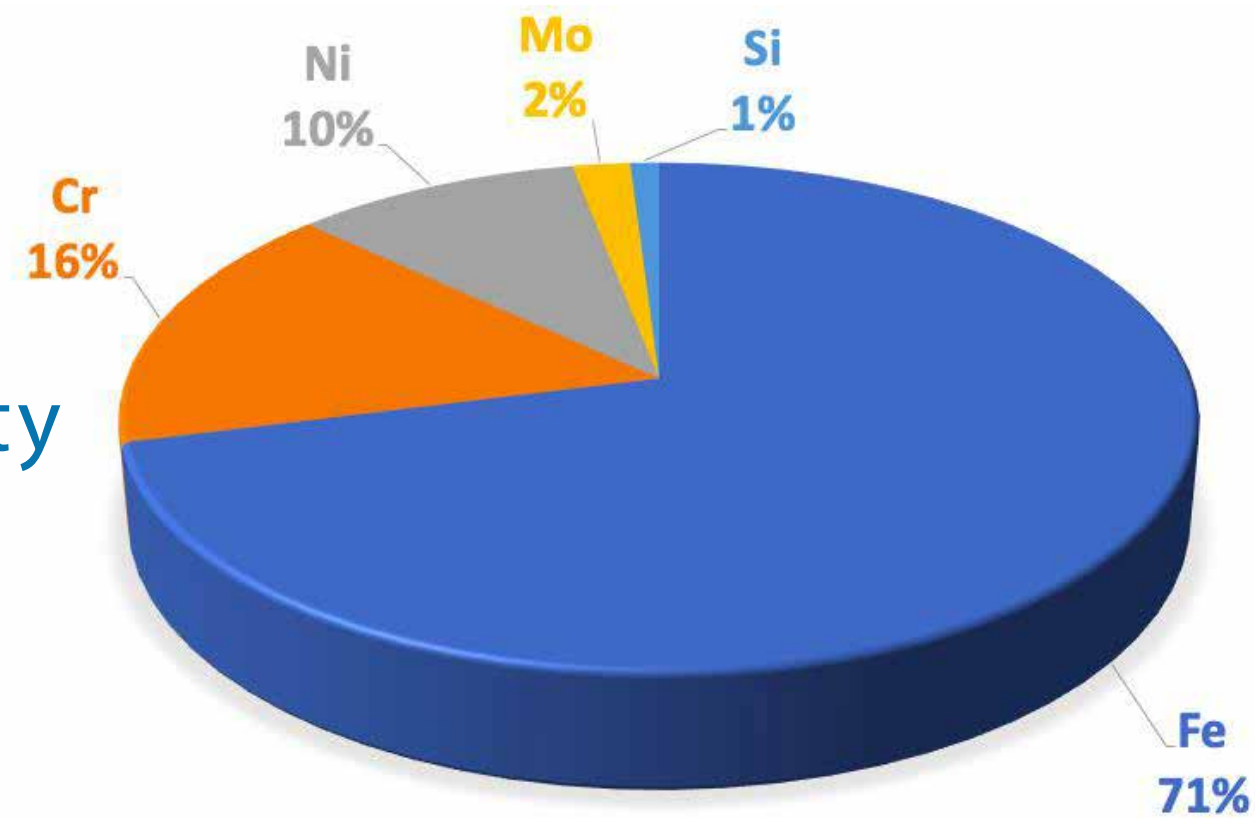
5000X



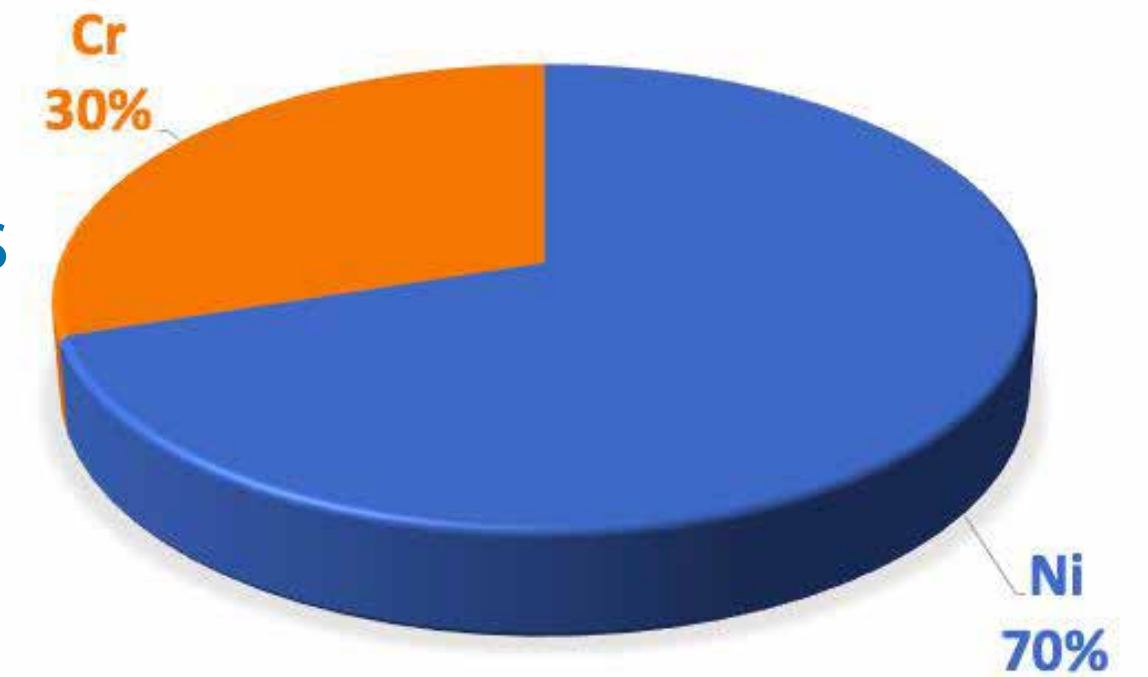
Biggest Comp. Ceramic



PurTec uses less heavy metals for consumer safety



Biggest Comp. uses more heavy metals



Portland Design HQ OEM/ODM



Domestic Customizations



Mouthpiece Options



.3/.5g Disposables



1g. Rechargeable Disposable



POD Systems





Integration Team



10 years of cart-filling and production line experience



Inspiring innovation & creativity in all we do



Safe, quality, emissions tested products



USA Based. Local integration teams to travel to your facility to create best-in-class SOP's, training programs, efficiency planning, and hands-on product development.



Treating co-workers, vendors, and consumers like family



HQ
Vancouver, WA

R&D Office
Zug, Switzerland

R&D Center
Shenzhen, China

PURTEC