



May 12, 2020

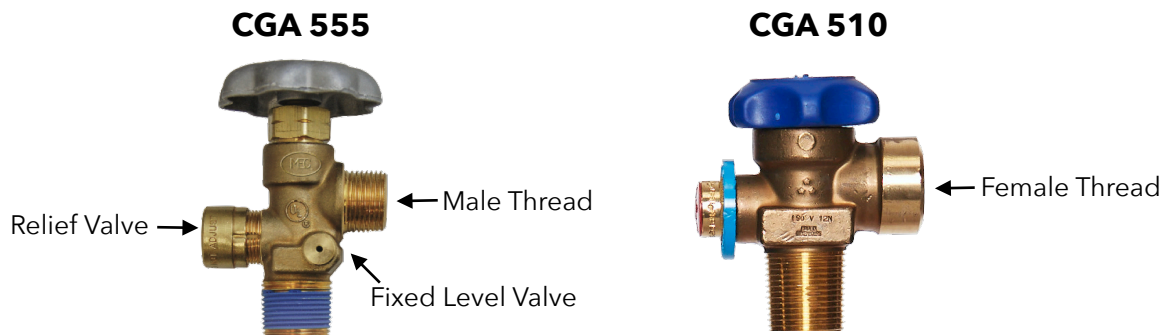
VALVE SAFETY BULLETIN

Dear Valued Clientele,

Here at Solvent Direct, our #1 priority is ensuring the success of our clients and their businesses. Workplace safety is a cornerstone to the success of any company and Solvent Direct consistently strives to meet and exceed safety and compliance standards.

In light of new regulations, per the recommendations of the Compressed Gas Association (CGA) and National Fire Protection Association (NFPA), we will begin to transition to the CGA 555 valve in our LPG Cylinders for liquid to liquid Service in order to maintain full compliance, safety and ease of use.

Key differences between the CGA 555 and the CGA 510:



Why the CGA 555 and not the CGA 510?

The answer is simple; the CGA 510 valve is the same fitting used in vapor gas applications such as barbecue grills, gas stoves and outdoor gas heaters. Well known valve manufacturers such as Rotarex, Rego, Sherwood and Marshall Excelsior do not, and will not allow their CGA 510 valve to be modified with a liquid withdrawal tube because this retrofit could lead to a very dangerous scenario when connected to other applications.

The CGA 555 valve features include:

- Excess flow ball limits flow in case of line breaks or accidental disconnects
- Fixed level vent valve

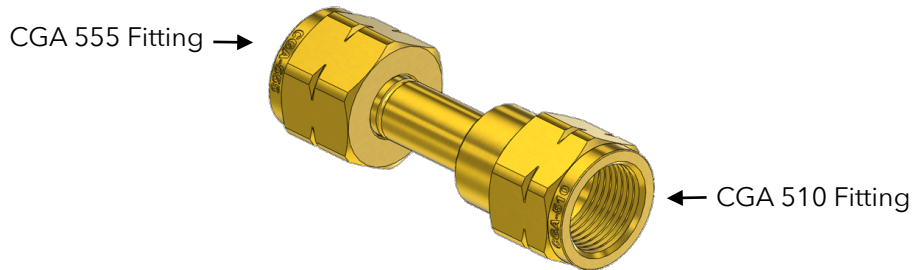
- Full length liquid withdrawal tube
- Pressure relief valve

Most importantly, the CGA specifies the use of the 555 valve in liquid applications and NFPA 58 requires the 555 valve outlet and internal excess-flow valve for use in liquid service.

What this means for you?

First and foremost, you can remain confident with Solvent Direct, your process will remain safe and compliant. The key difference your connection to this new valve. In order to connect to the CGA 555 male valve to your system, you will need the below adapter. Solvent Direct will provide this adapter to existing customers free of charge.

Solvent Direct CGA 510 to CGA 555 Valve Adapter



The success of your business is our #1 Priority.

Safety and compliance is a top priority for us here at Solvent Direct. Our clients can remain confident partnering with Solvent Direct will keep your business at the forefront of safety, purity and compliance standards and regulation in this new and emerging market.

Sincerely,

Lexis B. Shontz

President & Founder

Solvent Direct, Inc