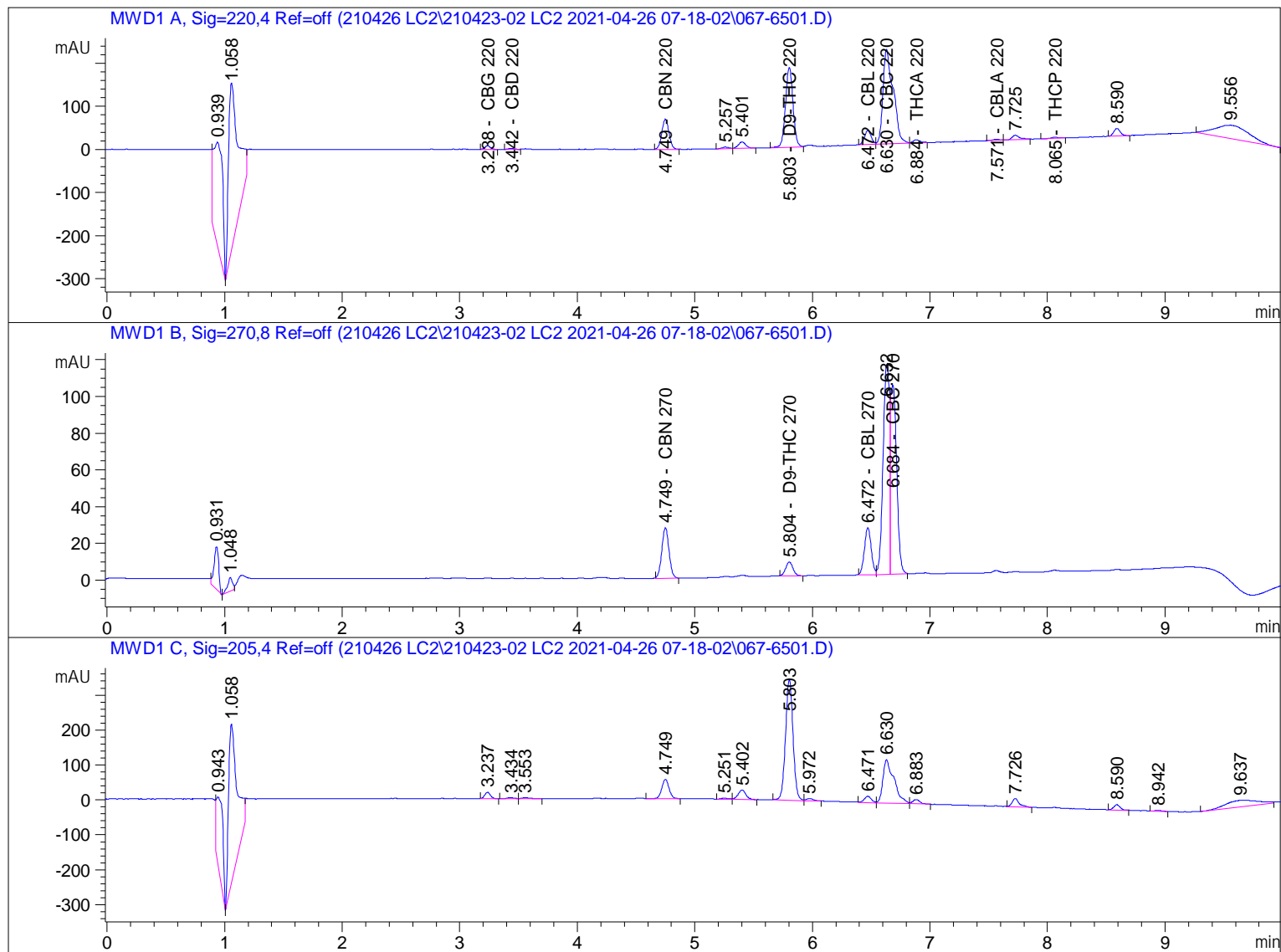


=====
Acq. Operator : DB, AF, PV, GR Seq. Line : 65
Acq. Instrument : Instrument 1 Location : Vial 67
Injection Date : 4/26/2021 7:30:11 PM Inj : 1
Inj Volume : 1.5 µl
Acq. Method : C:\CHEM32\1\DATA\210426 LC2\210423-02 LC2 2021-04-26 07-18-02\
01CANNABINOIDS.M
Last changed : 12/3/2019 12:15:28 PM
Analysis Method : C:\CHEM32\1\METHODS\210409 MWD ICAL.M
Last changed : 4/9/2021 12:44:27 PM by DB, AF, PV, GR



=====
External Standard Report
=====

Sorted By : Signal
Calib. Data Modified : 4/9/2021 12:39:36 PM
Multiplier: : 1.0000
Dilution: : 1.0000
Do not use Multiplier & Dilution Factor with ISTDs

Signal 1: MWD1 A, Sig=220,4 Ref=off

RetTime [min]	Type	Area [mAU*s]	Amt/Area	Amount [ng/ul]	Grp	Name
2.113		-	-	-		CBDVA 220
2.331		-	-	-		CBDV 220
2.903		-	-	-		CBDA 220
3.008		-	-	-		CBGA 220
3.238	BB	28.10014	1.08834e-1	3.05826		CBG 220
3.442	BB	9.42617	0.00000	0.00000		CBD 220
3.534		-	-	-		THCV 220
4.431		-	-	-		THCVA 220
4.749	BB	301.26779	6.04145e-2	18.20096		CBN 220
5.555		-	-	-		CBDP 220
5.803	BB	818.34888	1.10970e-1	90.81208		D9-THC 220
5.940		-	-	-		D8-THC 220
6.472	BV	131.77802	1.03817e-1	13.68085		CBL 220
6.630	VV	1324.09534	1.10544e-1	146.37035		CBC 220
6.884	VB	31.23952	6.77051e-2	2.11507		THCA 220
7.435		-	-	-		CBCA 220
7.571	BV	9.41922	5.82248e-1	5.48432		CBLA 220
8.065	BB	11.54476	1.56679e-1	1.80882		THCP 220

Totals : 281.53071

Signal 2: MWD1 B, Sig=270,8 Ref=off

RetTime [min]	Type	Area [mAU*s]	Amt/Area	Amount [ng/ul]	Grp	Name
2.114		-	-	-		CBDVA 270
2.332		-	-	-		CBDV 270
2.904		-	-	-		CBDA 270
3.009		-	-	-		CBGA 270
3.214		-	-	-		CBG 270
3.412		-	-	-		CBD 270
3.535		-	-	-		THCV 270
4.432		-	-	-		THCVA 270
4.749	BB	117.52663	1.77074e-1	20.81097		CBN 270
5.556		-	-	-		CBDP 270
5.804	BB	32.06575	2.49151	79.89200		D9-THC 270
5.941		-	-	-		D8-THC 270
6.472	BV	103.27436	0.00000	0.00000		CBL 270
6.684	VB	362.89856	3.12674e-1	113.46899		CBC 270
6.924		-	-	-		THCA 270
7.436		-	-	-		CBCA 270
7.535		-	-	-		CBLA 270
8.144		-	-	-		THCP 270

Totals : 214.17196

Signal 3: MWD1 C, Sig=205,4 Ref=off

5 Warnings or Errors :

- Warning : Calibration warnings (see calibration table listing)
- Warning : Calibrated compound(s) not found
- Warning : Elution order of calibrated compounds may have changed
- Warning : Negative results set to zero (cal. curve intercept), (CBD 220)
- Warning : Invalid calibration curve, (CBL 270)

=====

Compound-related custom fields:

*** End of Report ***