

Certificate of Analysis

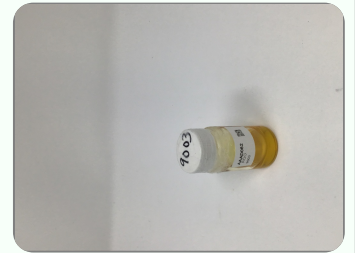
Order #: ROO200228-030022 Order Date: 2020-02-28 Collection Date: 2020-03-03 Report Date: 2020-03-06

Batch #: 9003
 Sample #: AAAD062
 Specimen Type: CBD/HEMP Derivative Products (Ingestion)
 Extracted From: Hemp
 Description: Broad Spectrum oil

Initial Gross Weight: 25272mg
 Method: SOP-3



Potency Tested	Residual Solvents Passed	Heavy Metals Passed
Mycotoxins Passed	Pathogenic Passed	Pathogenic Microbiology Passed
Terpenes Tested	Pesticides Passed	



The photos on this report are of a sample collected by the lab and may vary from the final packaging.

CBD Total 80.8500%	THC Total Not Detected	CBG Total 1.4240%
CBN Total Not Detected	Other Cannabinoids Not Detected	Total Cannabinoids 82.2740%

Potency - 11 (Tested)

(HPLC)

Analyte	Result (mg/g)	(%)	LOQ (%)	Analyte	Result (mg/g)	(%)	LOQ (%)	Analyte	Result (mg/g)	(%)	LOQ (%)
CBC	<LOQ		0.001	CBD	808.500	80.850	0.001	CBDA	<LOQ		0.001
CBDV	<LOQ		0.001	CBG	14.240	1.424	0.001	CBGA	<LOQ		0.001
CBN	<LOQ		0.001	Delta-8-THC	<LOQ		0.001	Delta-9-THC	<LOQ		0.001
THCA-A	<LOQ		0.001	THCV	<LOQ		0.001	Total CBD	808.500	80.850	0.001
Total THC	<LOQ		0.001								

*Total CBD = CBD + (CBD-A * 0.877), *Total THC = THCA-A * 0.877 + Delta 9 THC, *CBG Total = (CBGA * 0.877) + CBG, *CBN Total = (CBNA * 0.877) + CBN, *Other Cannabinoids Total = CBC + CBDV + THC + THCV + THCV-A, *Total Detected Cannabinoids = CBD Total + CBG Total + CBN Total + THC Total + CBC + CBDV + THC + THCV + THCV-A (mg/g) = Milligram per Gram, LOQ = Limit of Quantitation

Xueli Gao Lab Toxicologist
 Ph.D., DABT

Aixia Sun Principal Scientist
 D.H.Sc., M.Sc., B.Sc., MT (AAB)

This report shall not be reproduced, without written approval, from ACS Laboratory. The results of this report relate only to the material or product analyzed. Test results are confidential unless explicitly waived otherwise. Accredited by a third-party accrediting body as a competent testing laboratory pursuant to ISO/IEC 17025 of the International Organization for Standardization.

721 Cortaro Drive P: +1 (866) 762-8379 E: info@acslabcannabis.com License No. 800025015
 Sun City Center, FL - 33573 F: +1 (813) 634-4538 http://www.acslabcannabis.com CLIA No. 10D1094068

Certificate of Analysis

Order #: ROO200228-030022

Order Date: 2020-02-28

Collection Date: 2020-03-03

Report Date: 2020-03-06

Batch #: 9003

Sample #: AAAD062

Specimen Type: CBD/HEMP Derivative Products (Ingestion)

Extracted From: Hemp

Description: Broad Spectrum oil

Initial Gross Weight: 25272mg

Method: SOP-3



Residual Solvents (Extract Only) (Passed)

(GC/GCMS)

Analyte	Action Level (ppm)	Result (ppm)	LOQ (ppm)	Analyte	Action Level (ppm)	Result (ppm)	LOQ (ppm)	Analyte	Action Level (ppm)	Result (ppm)	LOQ (ppm)
Acetone	5000	<LOQ	87.9	Benzene	1.6	<LOQ	1.6	Chloroform	53	<LOQ	53
Ethanol	5000	<LOQ	26.7	Hexane	60	<LOQ	36.6	I-Butane	5000	<LOQ	100
Isopropanol	5000	<LOQ	52.3	Methanol	3000	<LOQ	87.9	N-Butane	5000	<LOQ	200
Pentane	5000	<LOQ	389.5	Toluene	890	<LOQ	38.4				

(ppm) = Parts per Million, (ppm) = (µg/g), , LOQ = Limit of Quantitation

Heavy Metals (Passed)

(ICP-MS)

Analyte	Action Level (ppb)	Result (ppb)	LOQ (ppb)	Analyte	Action Level (ppb)	Result (ppb)	LOQ (ppb)	Analyte	Action Level (ppb)	Result (ppb)	LOQ (ppb)
Arsenic (As)	1500	<LOQ	100	Cadmium (Cd)	500	<LOQ	100	Lead (Pb)	500	<LOQ	100
Mercury (Hg)	3000	<LOQ	100								

(ppb) = Parts per Billion, (ppb) = (µg/kg), , LOQ = Limit of Quantitation

Mycotoxins (Passed)

(LCMS/MS)

Analyte	Action Level (ppb)	Result (ppb)	LOQ (ppb)	Analyte	Action Level (ppb)	Result (ppb)	LOQ (ppb)	Analyte	Action Level (ppb)	Result (ppb)	LOQ (ppb)
Aflatoxin B1		<LOQ	6	Aflatoxin B2		<LOQ	6	Aflatoxin G1		<LOQ	6
Aflatoxin G2		<LOQ	6	Aflatoxin Total	20	<LOQ	6	Ochratoxin A	20	<LOQ	12

(ppb) = Parts per Billion, (ppb) = (µg/kg), , LOQ = Limit of Quantitation

Xueli Gao

Ph.D., DABT

Lab Toxicologist

Aixia Sun

D.H.Sc., M.Sc., B.Sc., MT (AAB)

Principal Scientist

This report shall not be reproduced, without written approval, from ACS Laboratory. The results of this report relate only to the material or product analyzed. Test results are confidential unless explicitly waived otherwise. Accredited by a third-party accrediting body as a competent testing laboratory pursuant to ISO/IEC 17025 of the International Organization for Standardization.

721 Cortaro Drive
Sun City Center, FL - 33573

P: +1 (866) 762-8379
F: +1 (813) 634-4538

E: info@acslabcannabis.com
<http://www.acslabcannabis.com>

License No. 800025015
CLIA No. 10D1094068

Certificate of Analysis

Order #: ROO200228-030022

Order Date: 2020-02-28

Collection Date: 2020-03-03

Report Date: 2020-03-06

Batch #: 9003

Sample #: AAAD062

Specimen Type: CBD/HEMP Derivative Products (Ingestion)

Extracted From: Hemp

Description: Broad Spectrum oil

Initial Gross Weight: 25272mg

Method: SOP-3



Pathogenic Microbiology #3 (HEMP Compliance Panel) (Passed)

(qPCR)

Analyte	Result
Listeria	
Monocytogenes	Absence

Pathogenic Microbiology #1 (MMTC Compliance Panel) (Passed)

(Micro Array)

Analyte	Result	Analyte	Result
Salmonella	Absence	STEC E. Coli	Absence

Xueli Gao

Ph.D., DABT

Lab Toxicologist

Aixia Sun

D.H.Sc., M.Sc., B.Sc., MT (AAB)

Principal Scientist

This report shall not be reproduced, without written approval, from ACS Laboratory. The results of this report relate only to the material or product analyzed. Test results are confidential unless explicitly waived otherwise. Accredited by a third-party accrediting body as a competent testing laboratory pursuant to ISO/IEC 17025 of the International Organization for Standardization.

721 Cortaro Drive
Sun City Center, FL - 33573

P: +1 (866) 762-8379
F: +1 (813) 634-4538

E: info@acslabcannabis.com
<http://www.acslabcannabis.com>

License No. 800025015
CLIA No. 10D1094068

Certificate of Analysis

Order #: ROO200228-030022

Order Date: 2020-02-28

Collection Date: 2020-03-03

Report Date: 2020-03-06

Batch #: 9003

Sample #: AAAD062

Specimen Type: CBD/HEMP Derivative Products (Ingestion)

Extracted From: Hemp

Description: Broad Spectrum oil

Initial Gross Weight: 25272mg

Method: SOP-3



Terpenes - FL (Tested)

(GC/GCMS)

Analyte	Result (mg/g)	(%)	LOQ (%)	Analyte	Result (mg/g)	(%)	LOQ (%)	Analyte	Result (mg/g)	(%)	LOQ (%)
(+)-Cedrol	<LOQ		0.001	(R)-(+)-Limonene	<LOQ		0.001	3-Carene	<LOQ		0.001
Alpha-Bisabolol	<LOQ		0.001	alpha-Cedrene	<LOQ		0.001	alpha-Humulene	<LOQ		0.001
alpha-Phellandrene	<LOQ		0.001	alpha-Pinene	<LOQ		0.001	alpha-Terpinene	<LOQ		0.001
Borneol	<LOQ		0.001	beta-Myrcene	<LOQ		0.001	beta-Pinene	<LOQ		0.001
Caryophyllene oxide	<LOQ		0.001	Camphene	<LOQ		0.001	Camphors	<LOQ		0.001
Fenchyl Alcohol	<LOQ		0.001	cis-Nerolidol	<LOQ		0.001	Eucalyptol	<LOQ		0.001
Guaiol	<LOQ		0.001	Farnesene	<LOQ		0.001	Fenchone	<LOQ		0.001
Isopulegol	<LOQ		0.001	gamma-Terpinene	<LOQ		0.001	Geraniol	<LOQ		0.001
Ocimene	<LOQ		0.001	Hexahydrothymol	<LOQ		0.001	Geranyl acetate	<LOQ		0.001
Sabinene Hydrate	<LOQ		0.001	Linalool	<LOQ		0.001	Isoborneol	<LOQ		0.001
trans-beta-Ocimene	<LOQ		0.001	Pulegone	<LOQ		0.001	Nerol	<LOQ		0.001
				Terpineol	<LOQ		0.001	Sabinene	<LOQ		0.001
				trans-Caryophyllene	<LOQ		0.001	Terpinolene	<LOQ		0.001
								trans-Nerolidol	<LOQ		0.001
								Valencene	<LOQ		0.001

(mg/g) = Milligram per Gram, , LOQ = Limit of Quantitation

Xueli Gao

Ph.D., DABT

Lab Toxicologist

Aixia Sun

D.H.Sc., M.Sc., B.Sc., MT (AAB)

Principal Scientist

This report shall not be reproduced, without written approval, from ACS Laboratory. The results of this report relate only to the material or product analyzed. Test results are confidential unless explicitly waived otherwise. Accredited by a third-party accrediting body as a competent testing laboratory pursuant to ISO/IEC 17025 of the International Organization for Standardization.

721 Cortaro Drive
Sun City Center, FL - 33573

P: +1 (866) 762-8379
F: +1 (813) 634-4538

E: info@acslabcannabis.com
<http://www.acslabcannabis.com>

License No. 800025015
CLIA No. 10D1094068

Certificate of Analysis

Order #: ROO200228-030022

Order Date: 2020-02-28

Collection Date: 2020-03-03

Report Date: 2020-03-06

Batch #: 9003

Sample #: AAAD062

Specimen Type: CBD/HEMP Derivative Products (Ingestion)

Extracted From: Hemp

Description: Broad Spectrum oil

Initial Gross Weight: 25272mg

Method: SOP-3



Pesticides (Passed)

(LCMS/MS)

Analyte	Action Level (ppb)	Result (ppb)	LOQ (ppb)	Analyte	Action Level (ppb)	Result (ppb)	LOQ (ppb)	Analyte	Action Level (ppb)	Result (ppb)	LOQ (ppb)
Abamectin	300	<LOQ	28.23	Acephate	3000	<LOQ	30	Acequinocyl	2000	<LOQ	48
Acetamiprid	3000	<LOQ	30	Aldicarb	100	<LOQ	30	Azoxystrobin	3000	<LOQ	10
Bifenazate	3000	<LOQ	30	Bifenthrin	500	<LOQ	30	Chlorfenapyr	100	<LOQ	48
Chlorpyrifos	100	<LOQ	30	Clofentezine	500	<LOQ	30	Coumaphos	100	<LOQ	30
Cypermethrin	1000	<LOQ	30	Daminozide	100	<LOQ	30	DDVP(Dichlorvos)	100	<LOQ	30
Diazinon	200	<LOQ	30	Dimethoate	100	<LOQ	30	Dimethomorph	3000	<LOQ	30
Ethoprop(hos)	100	<LOQ	30	Etofenprox	100	<LOQ	30	Etoxazole	1500	<LOQ	30
Fenhexamid	3000	<LOQ	30	Fenoxycarb	100	<LOQ	30	Fipronil	100	<LOQ	30
Fonicamid	2000	<LOQ	30	Fludioxonil	3000	<LOQ	30	Hexythiazox	2000	<LOQ	30
Imazalil	100	<LOQ	30	Imidacloprid	3000	<LOQ	30	Kresoxim Methyl	1000	<LOQ	30
Malathion A	2000	<LOQ	30	Metalaxyl	3000	<LOQ	10	Methiocarb	100	<LOQ	30
Methomyl	100	<LOQ	30	Mevinphos	100	<LOQ	30	Myclobutanil	3000	<LOQ	30
Naled	500	<LOQ	30	Oxamyl	500	<LOQ	30	Paclobutrazol	100	<LOQ	30
Parathion-methyl	100	<LOQ	10	Pentachloronitrobenzene	200	<LOQ	30	Permethrin	1000	<LOQ	30
Piperonylbutoxide	3000	<LOQ	30	Prallethrin	400	<LOQ	30	Phosmet	200	<LOQ	30
Propoxur	100	<LOQ	30	Pyrethrins	1000	<LOQ	30	Propiconazole	1000	<LOQ	30
Spinetoram	3000	<LOQ	30	Spinosyn A	3000	<LOQ	30	Pyridaben	3000	<LOQ	30
Spiromesifen	3000	<LOQ	30	Spirotetramat	3000	<LOQ	30	Spinosyn D	3000	<LOQ	30
Tebuconazole	1000	<LOQ	30	Thiacloprid	100	<LOQ	30	Spiroxamine	100	<LOQ	30
Trifloxystrobin	3000	<LOQ	30					Thiamethoxam	1000	<LOQ	30

(ppb) = Parts per Billion, (ppb) = (µg/kg), , LOQ = Limit of Quantitation

Xueli Gao

Ph.D., DABT

Lab Toxicologist

Aixia Sun

D.H.Sc., M.Sc., B.Sc., MT (AAB)

Principal Scientist

This report shall not be reproduced, without written approval, from ACS Laboratory. The results of this report relate only to the material or product analyzed. Test results are confidential unless explicitly waived otherwise. Accredited by a third-party accrediting body as a competent testing laboratory pursuant to ISO/IEC 17025 of the International Organization for Standardization.

721 Cortaro Drive
Sun City Center, FL - 33573

P: +1 (866) 762-8379
F: +1 (813) 634-4538

E: info@acslabcannabis.com
<http://www.acslabcannabis.com>

License No. 800025015
CLIA No. 10D1094068