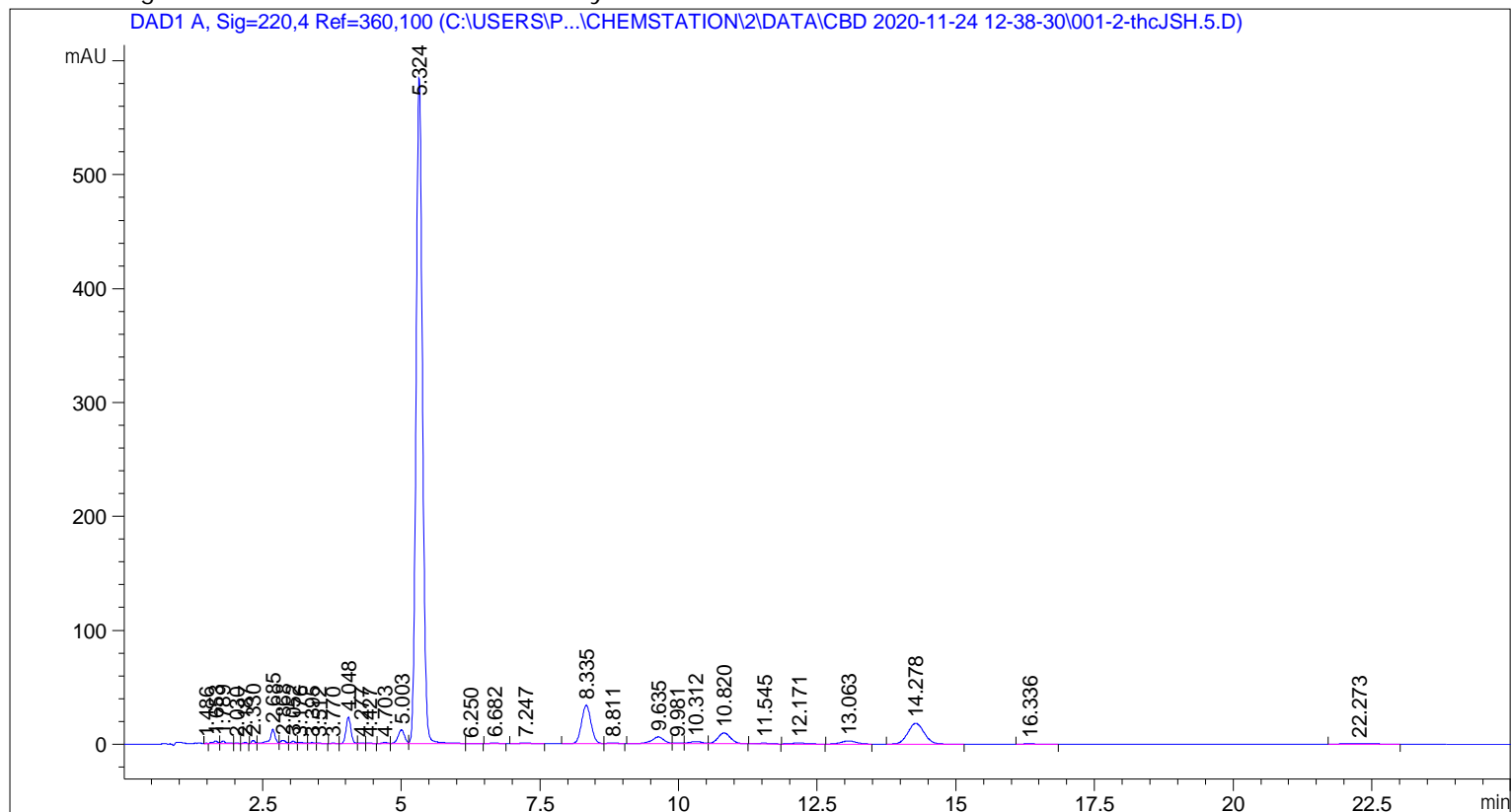


```

=====
Acq. Operator   : SYSTEM                               Seq. Line :    1
Sample Operator : SYSTEM
Acq. Instrument : 1100 LC                             Location  :    2
Injection Date  : 11/24/2020 12:40:57 PM             Inj       :    1
                                                    Inj Volume: 5.000 µl

Acq. Method    : C:\Users\Public\Documents\ChemStation\2\Data\CBD 2020-11-24 12-38-30\CBD.M
Last changed   : 5/18/2020 9:15:46 AM by SYSTEM
Analysis Method: C:\Users\Public\Documents\ChemStation\2\Methods\CBD.M
Last changed   : 12/3/2020 7:22:58 AM by SYSTEM
  
```



=====
 Area Percent Report
 =====

```

Sorted By      :      Signal
Multiplier     :      1.0000
Dilution      :      1.0000
Use Multiplier & Dilution Factor with ISTDs
  
```

Signal 1: DAD1 A, Sig=220, 4 Ref=360, 100

Peak #	RetTime [min]	Type	Width [min]	Area [mAU*s]	Height [mAU]	Area %
1	1.486	BV T	0.0412	4.07170e-1	1.62685e-1	6.468e-3
2	1.653	VH R	0.1062	13.76954	1.95372	0.2187
3	1.789	HB	0.0846	12.27936	2.21821	0.1950
4	2.030	HH	0.0573	1.57570	4.44706e-1	0.0250
5	2.187	HB	0.0682	4.02963	9.75976e-1	0.0640
6	2.330	BH	0.0638	11.69534	2.85468	0.1858
7	2.685	HH	0.0950	81.21589	12.63606	1.2900
8	2.868	HH	0.0918	18.38229	2.98865	0.2920

Sample Name: thcJSH.5

Peak #	RetTime [min]	Type	Width [min]	Area [mAU*s]	Height [mAU]	Area %
9	3.052	HH	0.0913	11.83773	2.05188	0.1880
10	3.176	HH	0.1057	9.22865	1.25598	0.1466
11	3.395	HH	0.0922	5.86480	9.47698e-1	0.0932
12	3.512	HB	0.0824	3.51400	6.17120e-1	0.0558
13	3.770	BH	0.0860	2.30592	4.33980e-1	0.0366
14	4.048	HH	0.0969	144.03981	23.06238	2.2879
15	4.277	HH	0.1040	4.79582	6.99304e-1	0.0762
16	4.427	HB	0.0980	4.03404	6.35840e-1	0.0641
17	4.703	BH	0.1155	8.12449	1.13454	0.1291
18	5.003	HH	0.1239	99.65062	12.11887	1.5829
19	5.324	HH	0.1256	4688.89453	584.16687	74.4789
20	6.250	HB	0.1785	2.64675	2.16626e-1	0.0420
21	6.682	HB	0.1628	6.46483	6.14393e-1	0.1027
22	7.247	BB	0.1957	10.69918	7.81644e-1	0.1699
23	8.335	BH	0.1867	399.41382	33.59197	6.3443
24	8.811	HB	0.1869	8.31968	7.41344e-1	0.1322
25	9.635	BH	0.2318	90.30096	5.85921	1.4343
26	9.981	HH	0.1626	6.86584	6.13443e-1	0.1091
27	10.312	HH	0.2299	26.48870	1.77743	0.4207
28	10.820	HB	0.2430	147.40027	9.39686	2.3413
29	11.545	BB	0.2350	9.02615	6.01812e-1	0.1434
30	12.171	BB	0.2680	15.17982	8.68078e-1	0.2411
31	13.063	HH	0.2992	50.92614	2.71076	0.8089
32	14.278	BB	0.3182	371.22498	18.17891	5.8966
33	16.336	HH	0.3282	3.27203	1.67251e-1	0.0520
34	22.273	HB	0.4798	21.72790	6.74598e-1	0.3451

Totals : 6295.60238 728.15348

=====
*** End of Report ***