

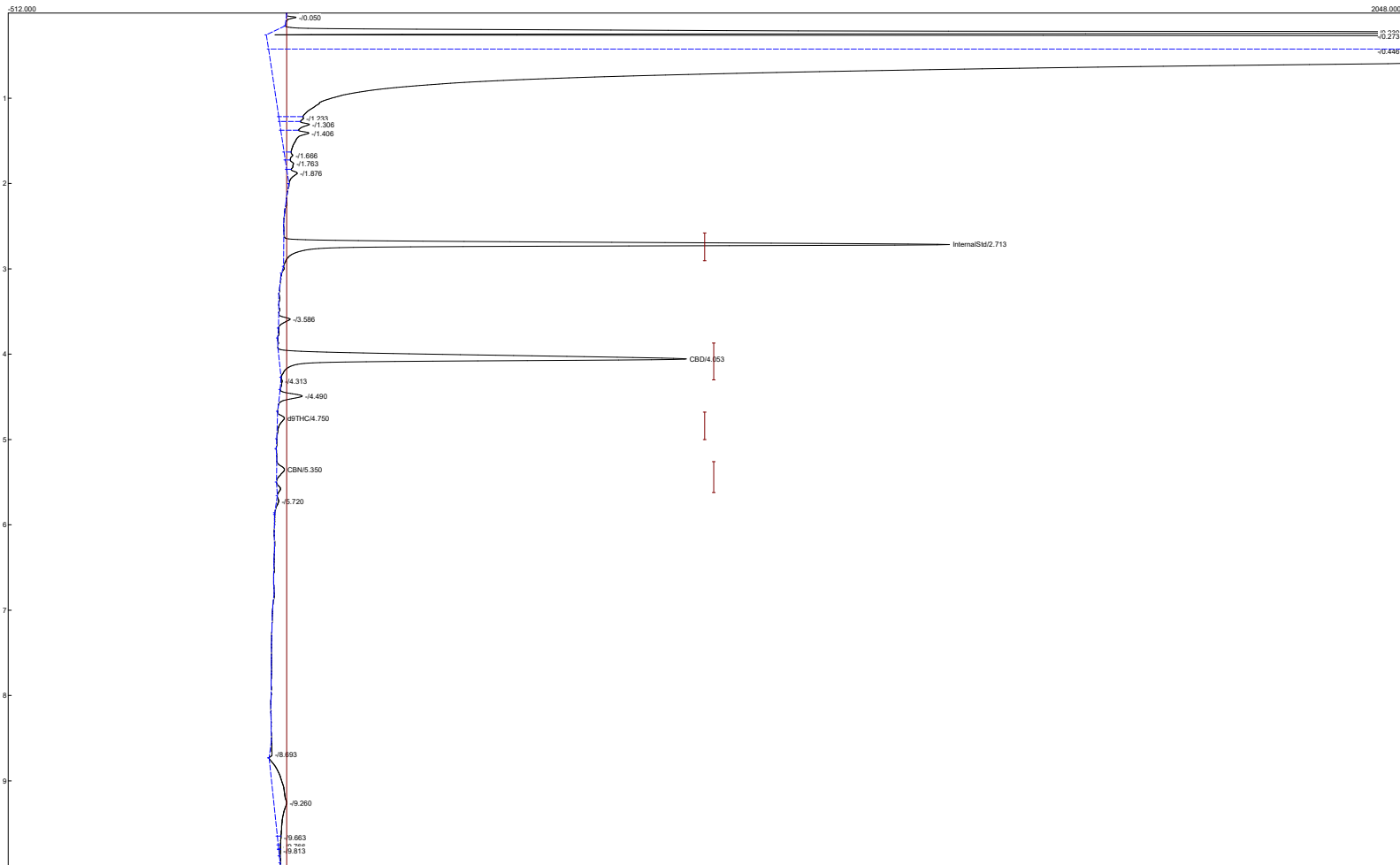
Lab name: SRI Instruments
 Client: SRI Final test
 Client ID: N11811
 Analysis date: 03/08/2022 09:40:07
 Method: Heated Inj 200C
 Description: SameDataAsCh1 by area%
 Column: 30MXT500
 Carrier: H2fromBIING
 Integration: Peak sens=95.0 Base sens=60.0 Min area= 10.00 Standard= 4.000 Sample=100.000 Tangents=off
 Data file: 333calMXT524.CHR ()
 Sample: 167ng/ul calibration

Temperature program:

Init temp	Hold	Ramp	Final temp
140.00	0.000	20.000	200.00
200.00	0.000	5.000	225.00
80.00	0.000	30.000	140.00

Events:

Time	Event
0.000	ZERO
0.000	SOUND
2.000	INTEG IMMEDIATE



Component	Retention	Area	Internal	Norm area %Units
InternalStd	2.713	3587.7772	100.0000	88.4355
CBD	4.053	3343.7708	12.4141	10.9785 %
d9THC	4.750	83.8862	0.3114	0.2754 %
CBN	5.350	94.6170	0.3513	0.3107 %
	7110.0512	113.0768	100.0000	