



# Certificate of Analysis



Sample #5 Suver G  
Matrix: Flower  
Accession Number: 210128KA0011F  
Harvest/Lot ID:  
Seed to Sale: \*  
Batch Date: 01/28/21  
Batch #:  
Sample Size Received: 1 units  
Retail Product Size: 1 units  
Ordered: 01/28/21  
Completed: 02/02/21  
Expires: 02/01/22  
Sampling Method: SOP Client Method

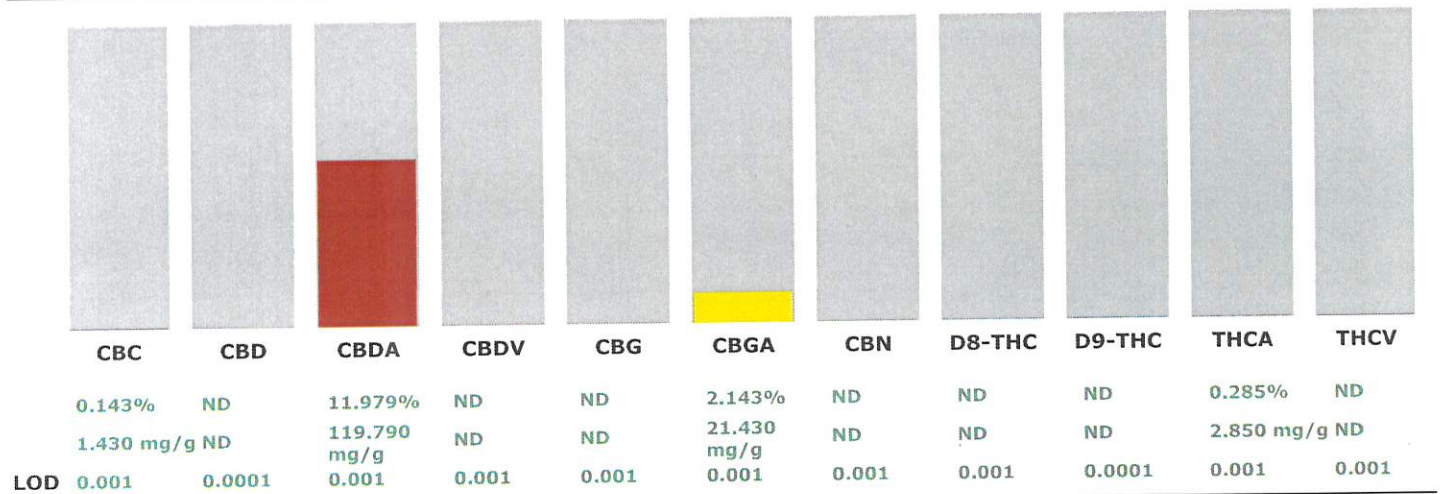
Feb 02, 2021 | Made By A  
Farmer



Ann Arbor, MI,  
7344763114

### CANNABINOID RESULTS

<b>Total THC</b> <b>0.315%</b>	<b>Total CBD</b> <b>11.073%</b>	<b>Total Cannabinoids</b> <b>13.674%</b>
-----------------------------------	------------------------------------	---



Full spectrum cannabinoid analysis utilizing High Performance Liquid Chromatography with UV detection (HPLC-PDA). (Method: SOP.KY.02.005) sample prep and Shimadzu High Sensitivity Method SOP.KY.02.012 for analysis. LOQ for all cannabinoids is 1 mg/L. % = %w/w = Percent (Weight of Analyte/Weight Product) Total Cannabinoids result reflects the absolute sum of all cannabinoids detected. \*\*Total Potential THC/CBD is calculated using the following formulas to take into account the loss of a carboxyl group during decarboxylation Total THC = THC + (THCa\*0.877) Total CBD = CBD + (CBDA\*0.877)

This report shall not be reproduced, unless in its entirety, without written approval from Universal Diagnostics. This report is an Universal Diagnostics certification. The results relate only to the material or product analyzed. Test results are confidential unless explicitly waived otherwise. Void after 1 year from test end date. Cannabinoid content of batch material may vary depending on sampling error. IC=In-control QC parameter, NC=Non-controlled QC parameter, ND=Not Detected, NA=Not Analyzed, ppm=Parts Per Million, ppb=Parts Per Billion. Limit of Detection (LoD) and Limit Of Quantitation (LoQ) are terms used to describe the smallest concentration that can be reliably measured by an analytical procedure. RPD=Reproducibility of two measurements. Action Levels are State determined thresholds for human safety for consumption and/or inhalation. The result >99% are variable based on uncertainty of measurement (UM) for the analyte. The UM error is available from the lab upon request. The "Decision Rule" for the pass/fail does not include the UM. The limits are based on F.S. Rule 64-4.310.

**David Greene**  
Lab Director  
State License # 19-05-02P

Signature

02/02/21

Signed On