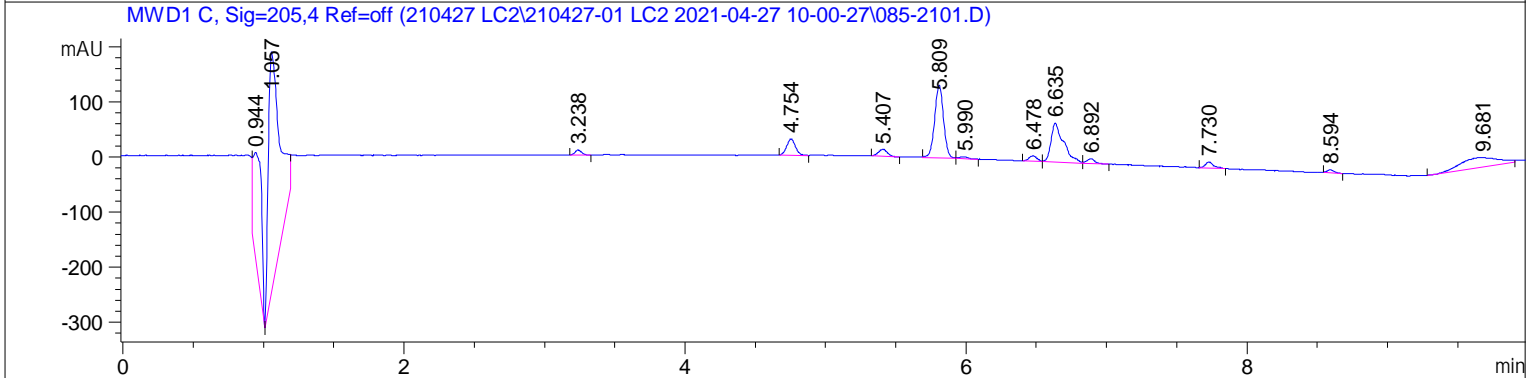
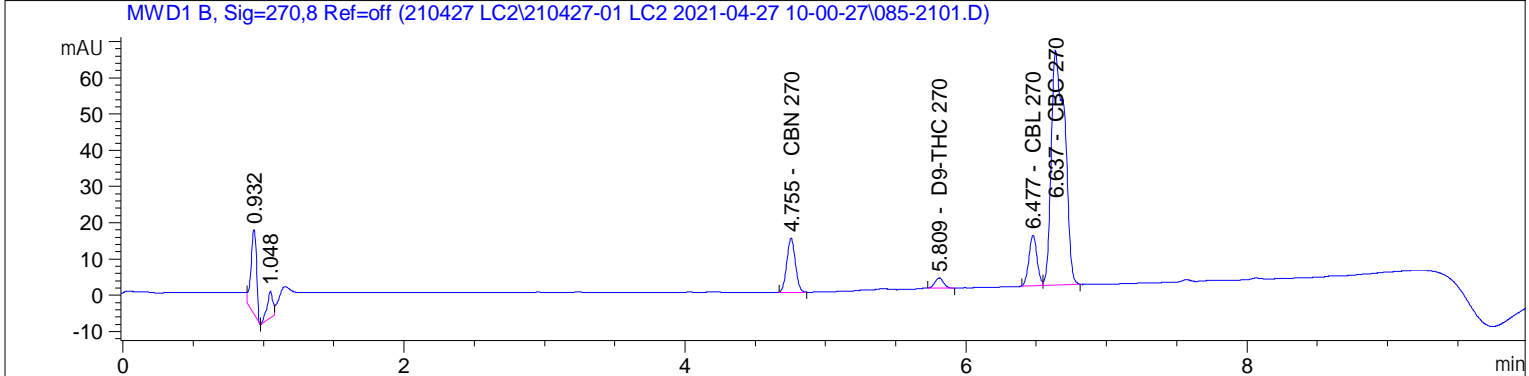
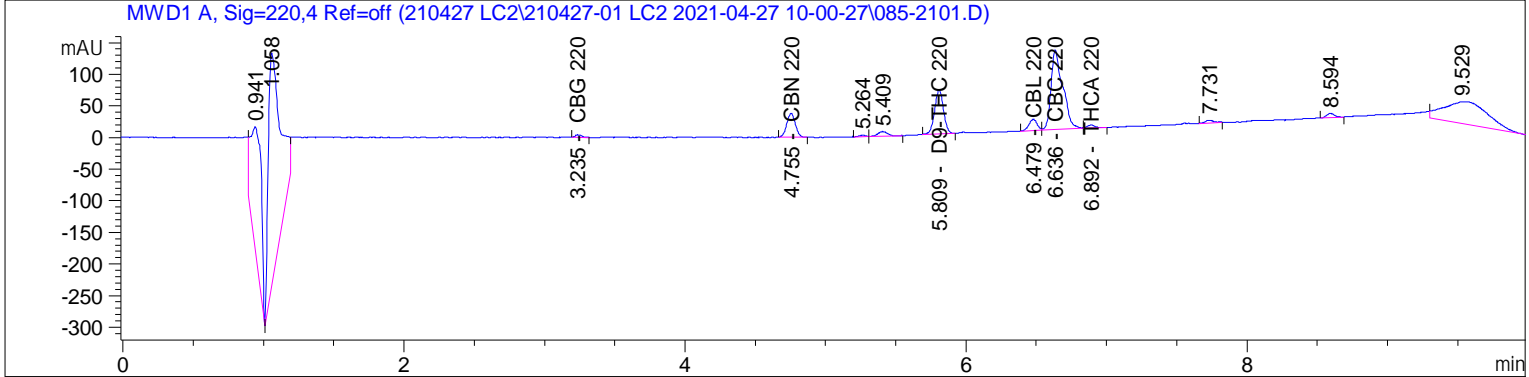


=====  
Acq. Operator : DB, AF, PV, GR Seq. Line : 21  
Acq. Instrument : Instrument 1 Location : Vial 85  
Injection Date : 4/27/2021 2:05:18 PM Inj : 1  
Inj Volume : 1.5 µl  
Acq. Method : C:\CHEM32\1\DATA\210427 LC2\210427-01 LC2 2021-04-27 10-00-27\  
01CANNABINOIDS.M  
Last changed : 12/3/2019 12:15:28 PM  
Analysis Method : C:\CHEM32\1\METHODS\210409 MWD ICAL.M  
Last changed : 4/9/2021 12:44:27 PM by DB, AF, PV, GR



=====  
External Standard Report  
=====

Sorted By : Signal  
Calib. Data Modified : 4/9/2021 12:39:36 PM  
Multiplier: : 1.0000  
Dilution: : 1.0000  
Do not use Multiplier & Dilution Factor with ISTDs

Signal 1: MWD1 A, Sig=220,4 Ref=off

RetTime [min]	Type	Area [mAU*s]	Amt/Area	Amount [ng/ul]	Grp	Name
2.113		-	-	-		CBDVA 220
2.331		-	-	-		CBDV 220
2.903		-	-	-		CBDA 220
3.008		-	-	-		CBGA 220
3.235	BB	14.04636	1.06525e-1	1.49629		CBG 220
3.411		-	-	-		CBD 220
3.534		-	-	-		THCV 220
4.431		-	-	-		THCVA 220
4.755	BB	162.97725	5.52238e-2	9.00022		CBN 220
5.555		-	-	-		CBDP 220
5.809	BB	310.75381	1.06849e-1	33.20361		D9-THC 220
5.940		-	-	-		D8-THC 220
6.479	BV	71.42205	1.06654e-1	7.61746		CBL 220
6.636	VB	728.52686	1.10556e-1	80.54332		CBC 220
6.892	BB	19.66888	4.45294e-2	8.75844e-1		THCA 220
7.435		-	-	-		CBCA 220
7.534		-	-	-		CBLA 220
8.143		-	-	-		THCP 220

Totals : 132.73675

Signal 2: MWD1 B, Sig=270,8 Ref=off

RetTime [min]	Type	Area [mAU*s]	Amt/Area	Amount [ng/ul]	Grp	Name
2.114		-	-	-		CBDVA 270
2.332		-	-	-		CBDV 270
2.904		-	-	-		CBDA 270
3.009		-	-	-		CBGA 270
3.214		-	-	-		CBG 270
3.412		-	-	-		CBD 270
3.535		-	-	-		THCV 270
4.432		-	-	-		THCVA 270
4.755	BB	63.48158	1.94560e-1	12.35095		CBN 270
5.556		-	-	-		CBDP 270
5.809	BB	11.70003	2.01214	23.54211		D9-THC 270
5.941		-	-	-		D8-THC 270
6.477	BV	56.45472	0.00000	0.00000		CBL 270
6.637	VB	429.87656	3.12633e-1	134.39354		CBC 270
6.924		-	-	-		THCA 270
7.436		-	-	-		CBCA 270
7.535		-	-	-		CBLA 270
8.144		-	-	-		THCP 270

Totals : 170.28660

Signal 3: MWD1 C, Sig=205,4 Ref=off

4 Warnings or Errors :

- Warning : Calibration warnings (see calibration table listing)
- Warning : Calibrated compound(s) not found
- Warning : Elution order of calibrated compounds may have changed
- Warning : Invalid calibration curve, (CBL 270)

=====  
Compound-related custom fields:

\*\*\* End of Report \*\*\*